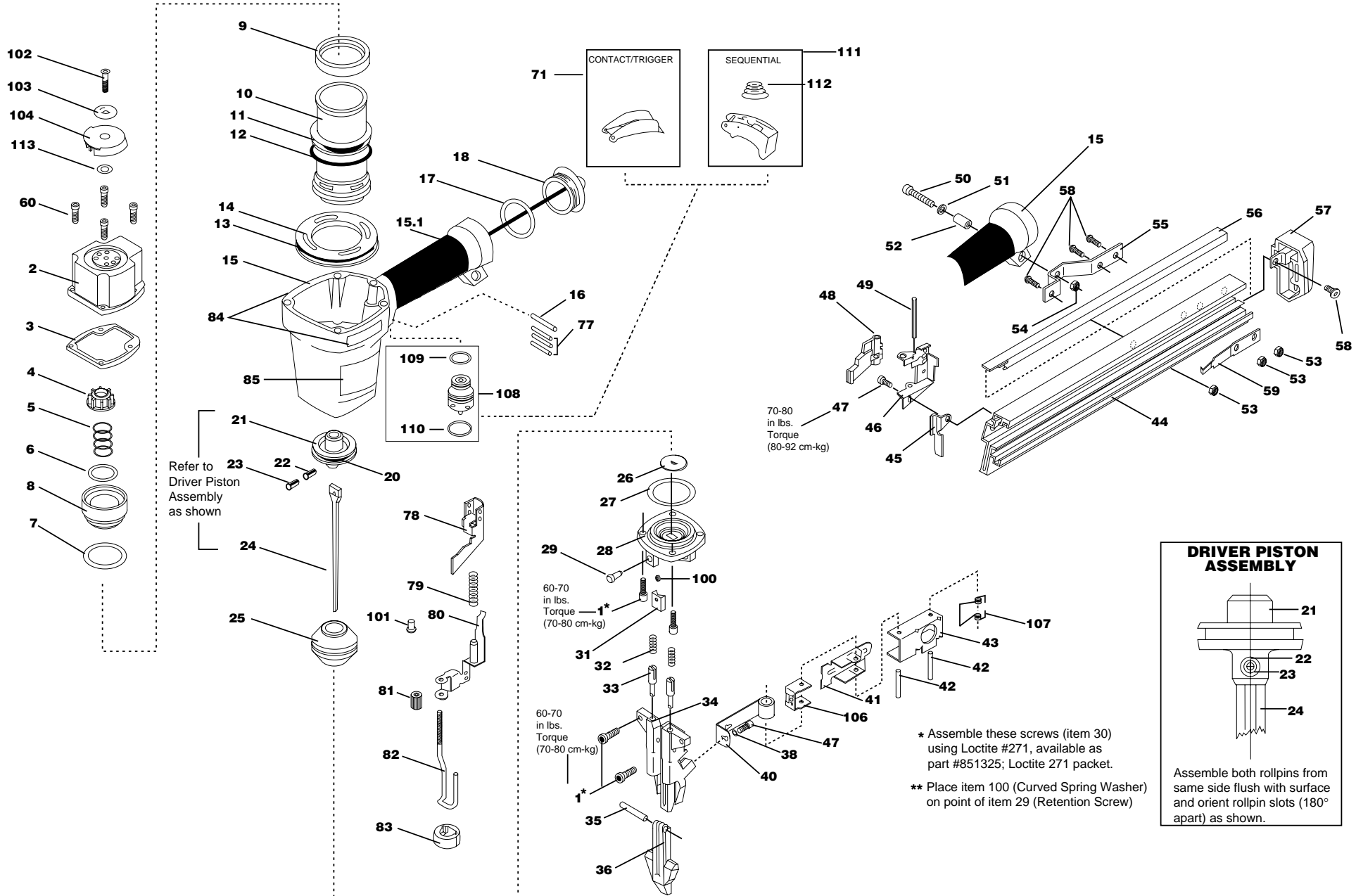


N50FN

PNEUMATIC FINISH NAILER

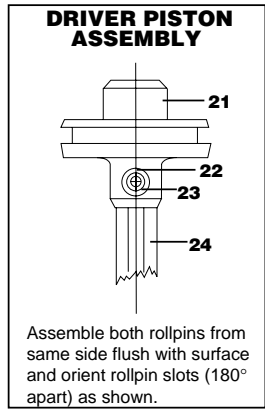
CLAVADORAS NEUMÁTICAS DE CLAVILLOS EN BARRA ANGULA

CLOUEURS PNEUMATIQUES DE FINITION EN BANDES



Refer to Driver Piston Assembly as shown

* Assemble these screws (item 30) using Loctite #271, available as part #851325; Loctite 271 packet.
 ** Place item 100 (Curved Spring Washer) on point of item 29 (Retention Screw)



Spare Parts for N50FN

Item#	Illus. #	Description
MSC5080-20	1	SCREW,SOC HD. CAP M5 X 20
N50090A	2	CYLINDER CAP UNIT
N50013	3	SEAL, CYLINDER CAP
T50002	4	BUMPER, TOP
854015	5	COMPRESSION SPRING
MRG039231	6	O-RING,1.543X.125
RG183109	7	O-RING,1.831X.098
T50003	8	HEAD VALVE
N70151	9	CYLINDER SEAL
N50050	10	CYLINDER
850605	11	O-RING,1.925X.103
N50034	12	CHECK SEAL
850683	13	O-RING,2.425X.103
N50015	14	RING, CYLINDER
N60027	15	FRAME
107490	15	GRIP,HANDLE
MPP030020	16	PIN,SPIROL M3X20MM
850235	17	O-RING,1.487X.103
T40207	18	END CAP
851547	20	O-RING,1.327X.138
UB3808.3	22	PIN, SPRING .156 X .50
UB2108.5	23	PIN, SPRING .094 X .50
N50091	24	N50FN DRIVER SERVICE PART
N50085	25	BUMPER
N50055	26	PLATE BUMPER
851483	27	O-RING,1.739X.070
N60004	28	BOTTOM FRAME
N50079	29	SCREW,RETENTION,SPECIAL
N60044	31	GUIDE, DRIVER

N60032	32	SPRING,COMPRESSION
N50054	33	PIN,SPECIAL
105024	34	NOSE
UB3817	35	PIN, SPRING .138 X 1.18
N50063	36	DOOR
LW10	38	WASHER, HSLWM#10
N60095A	40	SPRING ASSY.
N50066	41	PUSHER
N60017	42	PIN, SPECIAL
N60016	43	PUSHER GUIDE
105025	44	MAGAZINE
N50058	45	GUARD, TRIP
N60055	46	COVER TRIP ASSY.
MSC5080-8	47	SCREW,SHCS,M5X0.80X8
N60053	48	GUARD DOOR
N60101	49	PIN,SPECIAL
MSC6100-30	50	SCREW,SHCS,M6X1.00X30
MPW6.2	51	WASHER.SPECIAL
N70143	52	BUSHING - RUBBER
MHE5080-100	53	NUT,NLN M5X.8
MHE6100-100	54	NUT,ESN M6X1
N50068	55	BRACKET, MOUNTING
N50057	56	GUIDE, NAIL LINER
N50056	57	CAP, MAGAZINE
MSB5080-10	58	SCREW,SBHCS,M5X0.80X10
N60020	59	SPRING,FLAT
MSC5080-25	60	SCREW,SHCS,M5X0.80X25
N50082A	71	ASSEMBLY,TRIGGER
102549	77	PIN,SPECIAL SPIRAL
N60012	78	GUIDE,TRIP
N60038	79	SPRING,COMPRESSION

N60091A	80	TRIP UPPER ASSEMBLY
N60011	81	ADJUSTMENT, TRIP
107713	82	FOOT,TRIP
N60013	83	TIP, FOOT
100813	84	LABEL,STANLEY BOSTITCH
851392	85	LABEL, WARNING
851734	100	WASHER,SPRING
N60084	101	STOP CONTACT TRIP
MSF6100-20	102	SCREW, SFHCS M6 X 1.00X20
T50104	103	WASHER,SPECIAL
T50006	104	COVER-EXHAUST
851933	105	LABEL, TRIP ADJ. (NAILS)
N60094	106	WIPER, PUSHER SPRING
N60096	107	SPRING, TORSION
TVA1	108	KIT,TRIGGER VALVE
86459	109	O-RING,.614X.070
851554	110	O-RING,.703X.103
SEQ1	111	KIT,SEQUENTIAL TRIP CONV.
100387	112	SPRING, COMPRESSION
MPW6	113	WASHER