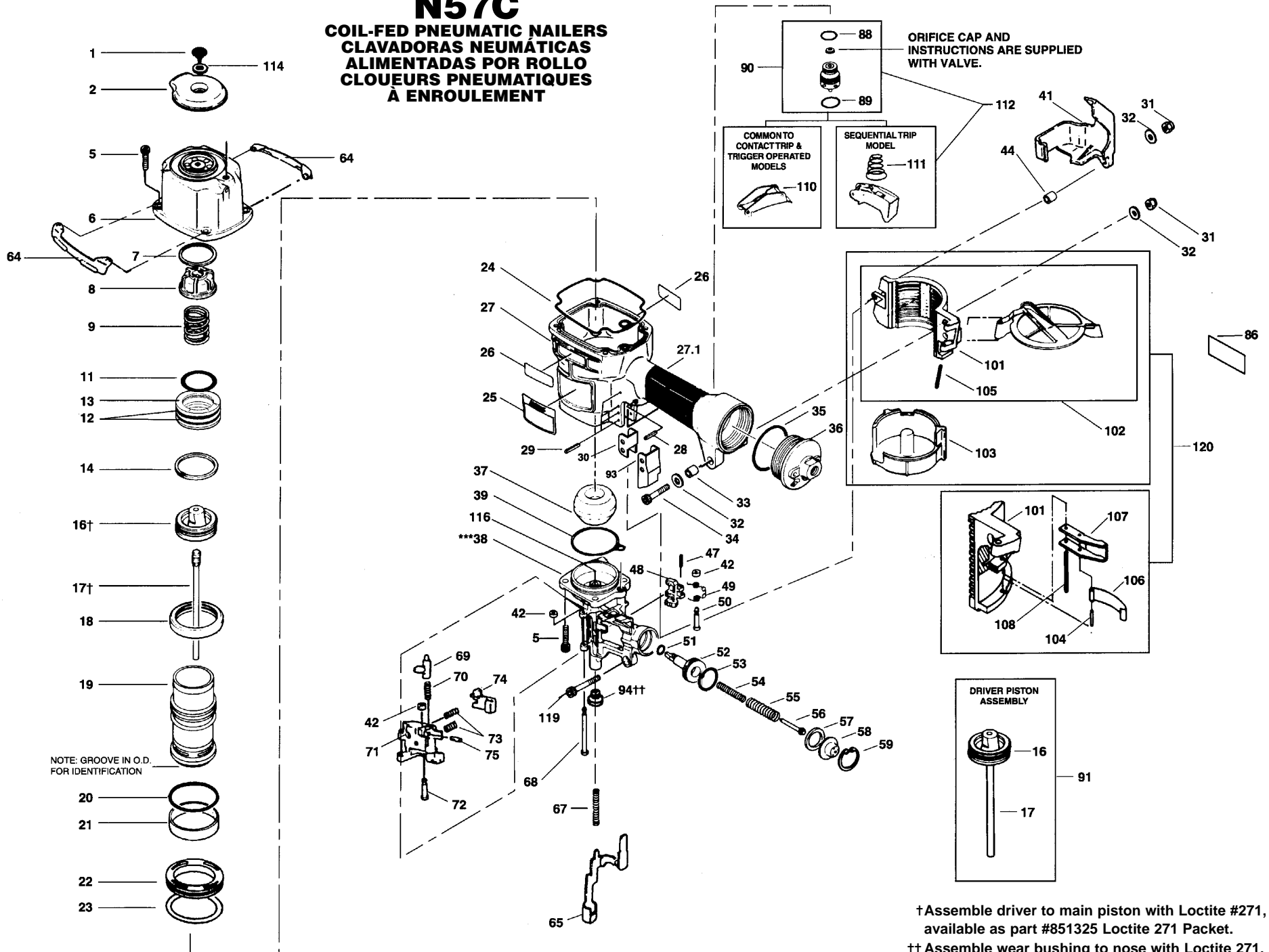


N57C

COIL-FED PNEUMATIC NAILERS
CLAVADORAS NEUMÁTICAS
ALIMENTADAS POR ROLLO
CLOUEURS PNEUMATIQUES
À ENROULEMENT



† Assemble driver to main piston with Loctite #271, available as part #851325 Loctite 271 Packet.
 †† Assemble wear bushing to nose with Loctite 271, available as part # 851325 Loctite 271 Packet.
 *** Includes Item #94

Spare Parts for N57C

Item#	Illus. #	Description
MSLC6100-16	1	SCREW, SLHCS M6 X 1.00X16
T55034	2	COVER, EXHAUST
MSC6100-25	5	SCREW,SHCS,M6X1.00X25
105584	6	CAP (SERVICE PART)
T55031	7	RING, BUMPER
T55050	8	BUMPER, PISTON STOP
854016	9	SPRING,HEAD VALVE
MRG041630	11	O-RING,1.638X.118
MRG052526	12	O-RING,2.067X.103
105577	13	HEAD VALVE
850607	14	O-RING,1.484X.139
104346	16	PISTON,MAIN
104362	17	DRIVER,REPLACEMENT
T60006	18	SEAL, CYLINDER
100568	19	CYLINDER SLEEVE
850006	20	O-RING,1.987X.103
T60021	21	SEAL,CHECK
T55027	22	RING, CYLINDER SLEEVE
851753	23	O-RING,2.734X.139
T55024	24	GASKET, FRAME CAP
851392	25	LABEL, WARNING
113220	26	LABEL,BOSTITCH
107490	27	GRIP,HANDLE
N65005	27	FRAME
MPP030020	28	PIN,SPIROL M3X20MM
102549	29	PIN,SPECIAL SPIRAL
100337	30	GUIDE, ARM
MHE6100-100	31	NUT,ESN M6X1
MPW6.2	32	WASHER.SPECIAL

N70143	33	BUSHING - RUBBER
MSC6100-40	34	SCREW,SHCS,M6X1.00X40
MRG044331	35	O-RING,1.748 X .122
N65006	36	CAP,END
105500	37	BUMPER
120932	38	NOSE
102301	39	SEAL,NOSE
100068	41	ARM COVER (A) N57C
854004	42	WASHER
105973	44	SPACER
MPP030016	47	PIN,SPIRAL,M3X16
100616	48	PAWL,FEED
854023	49	SPRING,TORSION
N50087	50	PIN,SPECIAL(STEP)
MRG009824	51	O-RING,.386X.094
N65019	52	FEED PISTON
851437	53	O-RING,.819X.095
N65042	54	COMP SPRING 3428
N65043	55	COMP SPRING 3335
N65044	56	SPRING GUIDE
101723	57	BUMPER, FEED PISTON
N65045	58	COLLAR SPRING
MRB026	59	RETAINING RING, METRIC
100185	64	WEAR PLATE
105847	65	TRIP,CONTACT
100874	67	TRIP SPRING
N65036	68	PIN,SPECIAL
N70150	69	LATCH DOOR
101408	70	SPRING,COMPRESSION
100060	71	DOOR
100182	72	PIVOT PIN, N57C

854011	73	COMPRESSION SPRING
100180	74	CHECK PAWL MACHINING
MPP030012	75	PIN, SPIROL
100360	86	LABEL, FASTENER & MODEL NO.
86459	88	O-RING,.614X.070
851554	89	O-RING,.703X.103
TVA1	90	KIT,TRIGGER VALVE
104345	91	ASSEMBLY,PISTON/DRIVER
100336	93	ARM COVER - B
N65001	101	BRACKET, CANISTER
105837	102	ASSY,CANISTER COVER
N65002	103	BOTTOM, CANISTER
UB2110.4	104	PIN, ROLL 1/8 X 5/8
UB3824.4	105	PIN, SPIROL
N80108	106	SPRING,FLAT
107455	107	LATCH,CANISTER
UB2816.4	108	PIN, SPIROL
N50082A	110	ASSEMBLY,TRIGGER
100387	111	SPRING, COMPRESSION
SEQ1	112	KIT,SEQUENTIAL TRIP CONV.
MPW6.3	114	WASHER,PWN M6
N65015	116	DRIVER GUIDE
MSC6100-35	119	SCREW,SHCS,M6X1.00X35
N65004A	120	ASSY, CANISTER