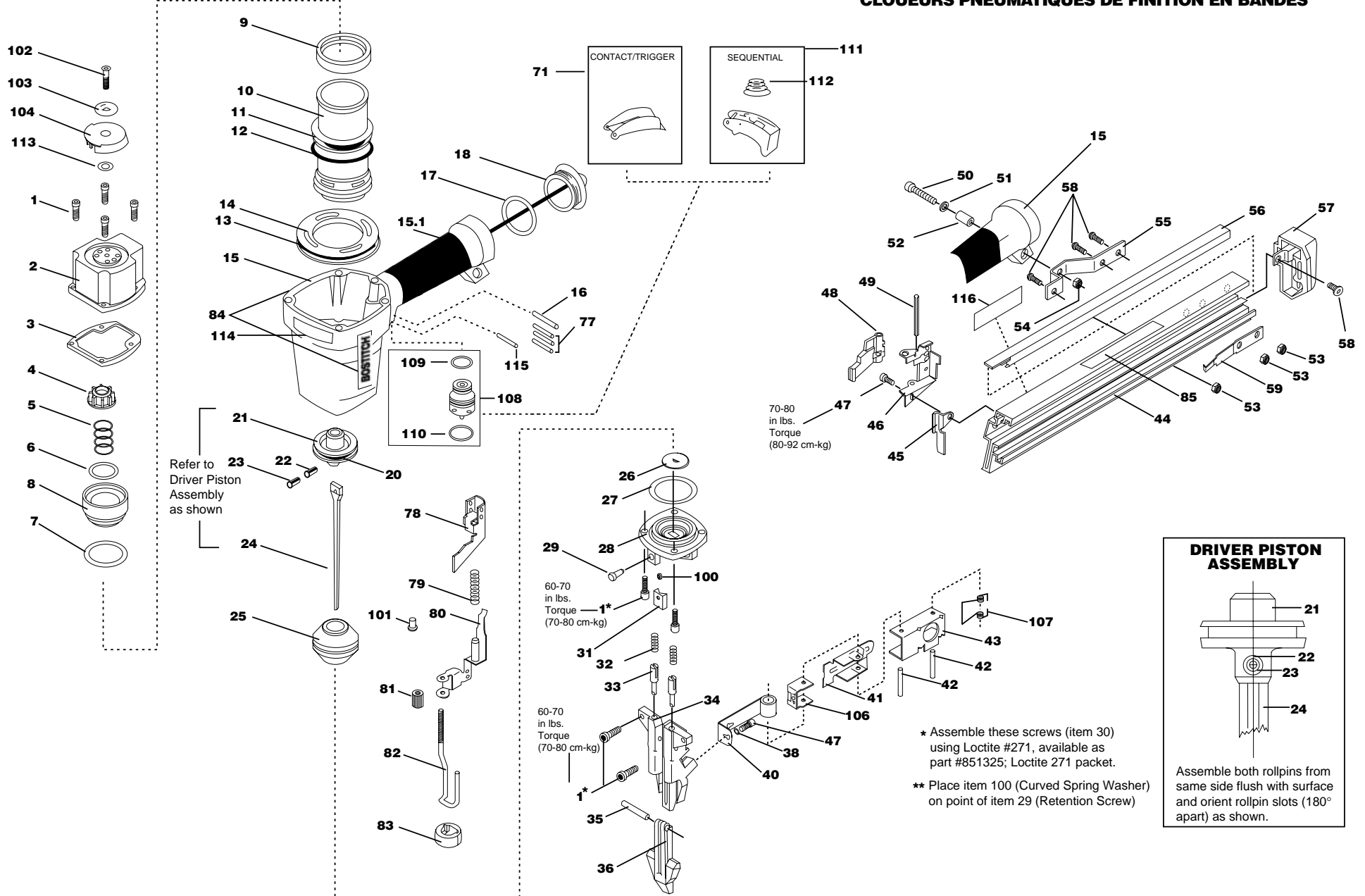


N60FN

PNEUMATIC FINISH NAILER

CLAVADORAS NEUMÁTICAS DE CLAVILLOS EN BARRA ANGULA

CLOUEURS PNEUMATIQUES DE FINITION EN BANDES



IP1015-1 REVD 9/00

TO BE USED WITH PARTS LIST IP1015-2 AND 103280 OPERATION AND MAINTENANCE MANUAL

Spare Parts for N60FN

Item#	Illus. #	Description
MSC5080-20	1	SCREW,SOC HD. CAP M5 X 20
T50054A	2	CYLINDER CAP UNIT
N50013	3	SEAL, CYLINDER CAP
T50002	4	BUMPER, TOP
854015	5	COMPRESSION SPRING
MRG039231	6	O-RING,1.543X.125
RG183109	7	O-RING,1.831X.098
T50003	8	HEAD VALVE
N70151	9	CYLINDER SEAL
N60030	10	SLEEVE, CYLINDER
850605	11	O-RING,1.925X.103
N50034	12	CHECK SEAL
850683	13	O-RING,2.425X.103
N50015	14	RING, CYLINDER
112583	15	FRAME,MACHINED
107490	15	GRIP,HANDLE
MPP030020	16	PIN,SPIROL M3X20MM
850235	17	O-RING,1.487X.103
T40207	18	END CAP
850606	20	O-RING,1.234X.139
N60056	21	PISTON, MAIN
UB3808.3	22	PIN, SPRING .156 X .50
UB2108.5	23	PIN, SPRING .094 X .50
N60098	24	N60FN DRIVER SERVICE PART
N50085	25	BUMPER
N60008	26	PLATE, BUMPER
851483	27	O-RING,1.739X.070
N60004	28	BOTTOM FRAME
N50079	29	SCREW,RETENTION,SPECIAL

N60044	31	GUIDE, DRIVER
N60032	32	SPRING, COMPRESSION
N60006	33	PIN, LATCH
104096	34	NOSE
UB3817	35	PIN, SPRING .138 X 1.18
N60005	36	DOOR
LW10	38	WASHER, HSLWM#10
N60095A	40	SPRING ASSY.
N60015	41	PUSHER
N60017	42	PIN, SPECIAL
N60016	43	PUSHER GUIDE
105875	44	MAGAZINE
N60021	45	GUARD, TRIP
N60055	46	COVER TRIP ASSY.
MSC5080-8	47	SCREW, SHCS, M5X0.80X8
N60053	48	GUARD DOOR
N60101	49	PIN, SPECIAL
MSC6100-30	50	SCREW, SHCS, M6X1.00X30
MPW6.2	51	WASHER. SPECIAL
N70143	52	BUSHING - RUBBER
MHE5080-100	53	NUT, NLN M5X.8
MHE6100-100	54	NUT, ESN M6X1
N60023	55	BRACKET, MOUNTING
N60037	56	GUIDE, NAIL LINER
N60002	57	CAP MAGAZINE
MSB5080-10	58	SCREW, SBHCS, M5X0.80X10
N60020	59	SPRING, FLAT
N50082A	71	ASSEMBLY, TRIGGER
102549	77	PIN, SPECIAL SPIRAL
N60012	78	GUIDE, TRIP
N60038	79	SPRING, COMPRESSION

N60091A	80	TRIP UPPER ASSEMBLY
N60011	81	ADJUSTMENT, TRIP
107714	82	FOOT,TRIP
N60013	83	TIP, FOOT
112696	84	LABEL,N59FN BOSTITCH
102455	85	LABEL,WARNING CT/ST
851734	100	WASHER,SPRING
N60084	101	STOP CONTACT TRIP
MSF6100-20	102	SCREW, SFHCS M6 X 1.00X20
T50104	103	WASHER,SPECIAL
T50006	104	COVER-EXHAUST
N60094	106	WIPER, PUSHER SPRING
N60096	107	SPRING, TORSION
TVA1	108	KIT,TRIGGER VALVE
86459	109	O-RING,.614X.070
851554	110	O-RING,.703X.103
SEQ1	111	KIT,SEQUENTIAL TRIP CONV.
100387	112	SPRING, COMPRESSION
MPW6	113	WASHER
117528	114	LABEL N62FN TOOL FRAME
106058	115	PIN,SPRING,M3X32
112692	116	LABEL,MODEL (N59FN) FASTENERS