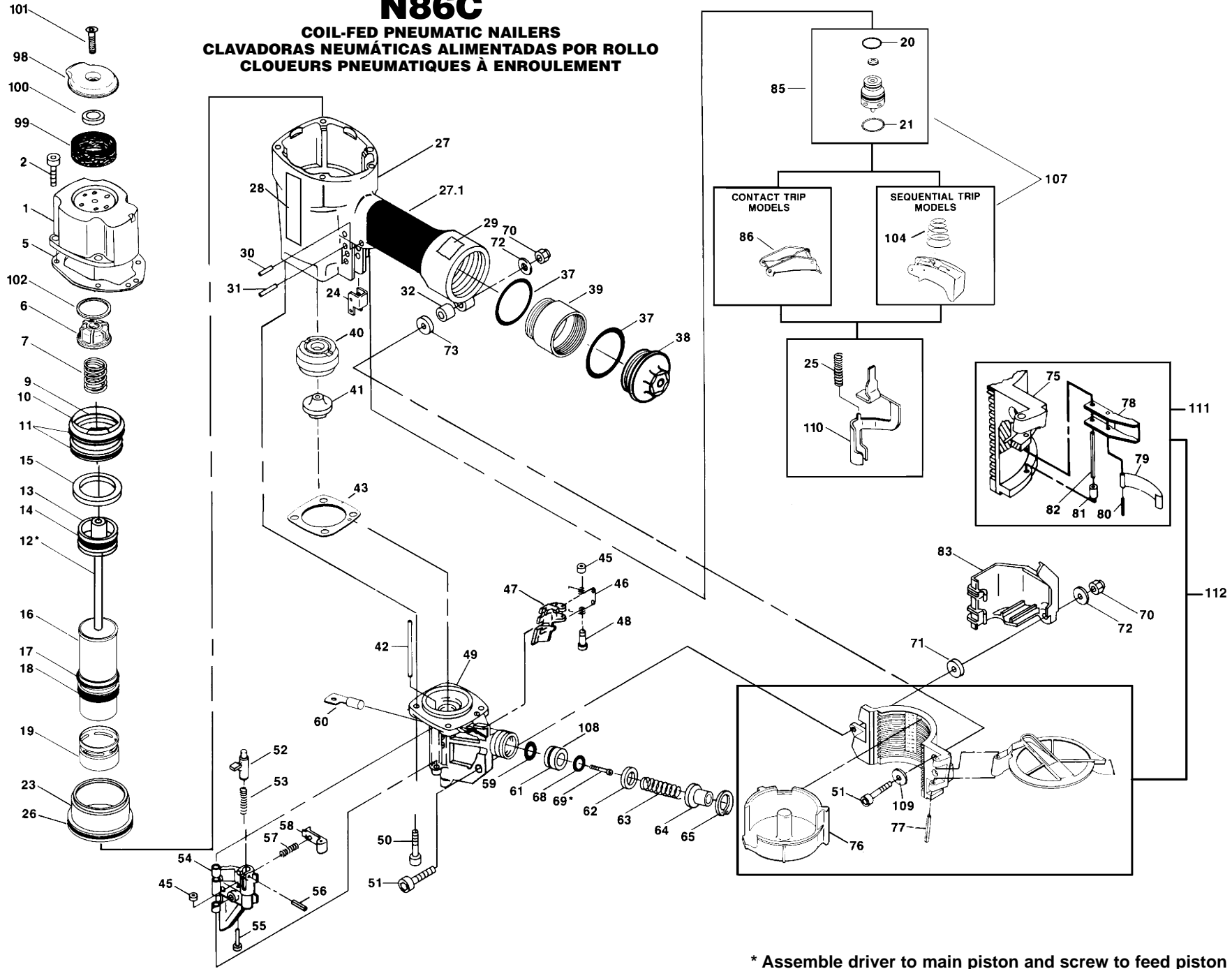


N86C

COIL-FED PNEUMATIC NAILERS
CLAVADORAS NEUMÁTICAS ALIMENTADAS POR ROLLO
CLOUEURS PNEUMATIQUES À ENROULEMENT



IP1066-1REVF
 TO BE USED WITH IP1066-2 AND 102776 OPERATION & MAINTENANCE MANUAL.

* Assemble driver to main piston and screw to feed piston rod with Loctite #271, available as part 851325 Loctite 271 Packet.
 ** Assemble screw to cylinder cap with Loctite #242, available as part 851385 Loctite 242 Packet.

Spare Parts for N86C

Item#	Illus. #	Description
105591	1	CAP (SERVICE PART)
MSC6100-25	2	SCREW,SHCS,M6X1.00X25
MSS5080-5P	4	SCREW,CUPSSS,M5X0.80X5
N70118	5	SEAL, CYLINDER CAP
N86132	6	PISTON STOP
854017	7	SPRING,COMPRESSION
MRG051531	9	O-RING,2.028X.122
105578	10	HEAD VALVE (SERVICE PART)
851538	11	O-RING,2.675X.116
N86123A	12	REPLACEMENT DRIVER ASSY.
N86107	13	MAIN PISTON
851606	14	O-RING,1.850X.210
N86125	15	HEAD VALVE SEAL
N86106	16	CYLINDER SLEEVE
89673	17	O-RING,2.550X.103
N86108	18	SEAL, CHECK
N86102	19	LOWER SLEEVE
86459	20	O-RING,.614X.070
MRG019824	21	O-RING,.780X.094
N86105	23	CYLINDER RING
N70145	24	ARM GUIDE
N80132	25	C.T. SPRING - N80
MRG084431	26	O-RING,3.323X.122
107490	27	GRIP,HANDLE
110005	27	FRAME
112767	28	LABEL,BOSTITCH
851392	29	LABEL, WARNING
MPP030020	30	PIN,SPIROL M3X20MM
102549	31	PIN,SPECIAL SPIRAL

N70143	32	BUSHING - RUBBER
MRG049431	37	O-RING,2.343X.118
N70167	38	END CAP
N86113	39	FRAME EXTENSION
N86110	40	BUMPER
N80130	41	DRIVER GUIDE
N80125	42	PIN,SPECIAL
N80354	43	GASKET, NOSE
854004	45	WASHER
N80120	46	SPRING,TORSION
N80119	47	PAWL, FEED
N50087	48	PIN,SPECIAL(STEP)
N80158	49	NOSE
MSC8125-28	50	SCREW, SHCS M8X28MM METRIC
MSC6100-40	51	SCREW,SHCS,M6X1.00X40
N70150	52	LATCH DOOR
854013	53	SPRING,COMPRESSION
N80126	54	DOOR
N70140	55	PIN,SPECIAL(STEP)
MPP030012	56	PIN, SPIROL
854011	57	COMPRESSION SPRING
N70149	58	PAWL CHECK
MRG009824	59	O-RING,.386X.094
N80121	60	ROD, FEED PISTON
851384	61	O-RING,.987X.103
N80123	62	BUMPER, FEED PISTON
N80122	63	SPRING,COMPRESSION
N80124	64	COVER, FEED PISTON
851383	65	RING, RETAINING METRIC
LW14.2	68	WASHER,1/4 HI COL LOCK
MSC6100-16	69	SCREW,SHCS,M6X1.00X16

MHE6100-100	70	NUT,ESN M6X1
105973	71	SPACER
MPW6.2	72	WASHER.SPECIAL
N80107	73	SPACER, FRAME
N80103	76	BOTTOM,CANISTER
UB5130	77	PIN,SPIROL 1/4 X 1 7/8
107455	78	LATCH,CANISTER
N80108	79	SPRING,FLAT
UB2110.4	80	PIN, ROLL 1/8 X 5/8
N80106	81	SPACER, LATCH
UB2126	82	PIN, ROLL 1/8 X 1 5/8 LONG
N80131	83	GUARD
TVA6	85	KIT,TRIGGER VALVE
N50082A	86	ASSEMBLY,TRIGGER
N100134A	98	COVER,EXHAUST
N100136	99	MUFFLER, EXHAUST
N100138	100	SPACER, MUFFLER
N100137	102	RING, BUMPER
100387	104	SPRING, COMPRESSION
SEQ1	107	KIT,SEQUENTIAL TRIP CONV.
N80128	108	PISTON, FEED
MPW6.3	109	WASHER,PWN M6
N80127	110	ARM,CONTACT
121632	111	ASSEMBLY,BRACKET
121635	112	ASSEMBLY,CANISTER