

**ACCESSORIES AVAILABLE
ACCESORIOS DISPONIBLES
ACCESSOIRES DISPONIBLES**

BC601	4 oz. Bostitch Air -Tool Lubricant
BC602	1 pint Bostitch Air -Tool Lubricant
BC603	1 pint Bostitch "Winter-Formula" Air-Tool Lubricant
BC604	1 quart Bostitch Air -Tool Lubricant
851385	Loctite Grade 242 (.02 oz.)
N80K2	Remote Control Kit
121072	Softfoot

BOSTITCH®

N88RH17-2

**PNEUMATIC STICK NAILERS
CLAVADORA NEUMÁTICA ALIMENTADA POR BARRA
CLOUEUR PNEUMATIQUE EN BANDES**



**TOOL PARTS ILLUSTRATION
ILUSTRACIÓN DE LAS PIEZAS DE LA HERRAMIENTA
ILLUSTRATION DES PIÈCES D'OUTILLAGE**

⚠ WARNING:

⚠ ADVERTENCIA:

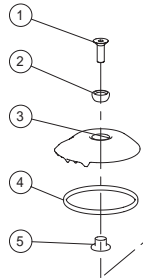
⚠ ATTENTION:

BEFORE PERFORMING REPAIRS ON THIS TOOL, ALL OPERATORS SHOULD STUDY THIS ILLUSTRATION, AS WELL AS THE PARTS LIST AND OPERATION AND MAINTENANCE MANUAL. OPERATORS SHOULD UNDERSTAND AND FOLLOW ALL SAFETY WARNINGS AND INSTRUCTIONS. KEEP THIS ILLUSTRATION WITH THE TOOL FOR FUTURE REFERENCE. IF YOU HAVE ANY QUESTIONS, CONTACT YOUR BOSTITCH REPRESENTATIVE OR DISTRIBUTOR.

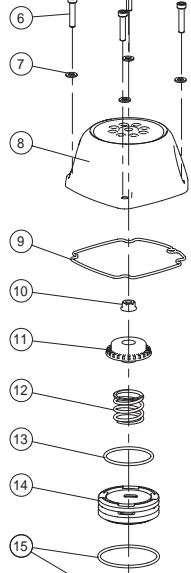
ANTES DE LLEVAR A CABO CUALQUIER REPARACIÓN EN LA HERRAMIENTA, TODOS LOS OPERARIOS DEBERÁN ESTUDIAR ESTA ILUSTRACIÓN, ASÍ COMO LA LISTA DE PIEZAS Y EL MANUAL DE OPERACIÓN Y MANTENIMIENTO. LOS OPERARIOS DEBERÁN ENTENDER Y SEGUIR TODAS LAS ADVERTENCIAS E INSTRUCCIONES DE SEGURIDAD. CONSERVE ESTA ILUSTRACIÓN CON LA HERRAMIENTA PARA PODER CONSULTARLA EN LO FUTURO. SI TUVIERA ALGUNA PREGUNTA, PÓNGASE EN CONTACTO CON SU REPRESENTANTE O DISTRIBUIDOR DE BOSTITCH.

AVANT DE PROCÉDER À LA RÉPARATION DE CET OUTIL, LES OPÉRATEURS DOIVENT ÉTUDIER LA PRÉSENTE ILLUSTRATION AINSI QUE LA LISTE DE PIÈCES ET LE MANUEL D'INSTRUCTIONS ET D'ENTRETIEN ; ILS DOIVENT ÉGALEMENT COMPRENDRE ET OBSERVER LES CONSIGNES DE SÉCURITÉ ET LES INSTRUCTIONS. CONSERVER CETTE ILLUSTRATION AVEC L'OUTIL POUR RÉFÉRENCE FUTURE. SI VOUS AVEZ DES QUESTIONS, COMMUNIQUEZ AVEC VOTRE REPRÉSENTANT OU VOTRE DISTRIBUTEUR DE BOSTITCH.

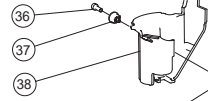
125-140 IN LBS.
OF TORQUE
(144-161 CM-KG)



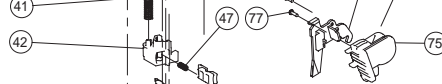
125-140 IN LBS.
OF TORQUE
(144-161 CM-KG)
4 PLACES



30-45 IN LBS.
OF TORQUE
(35-52 CM-KG)



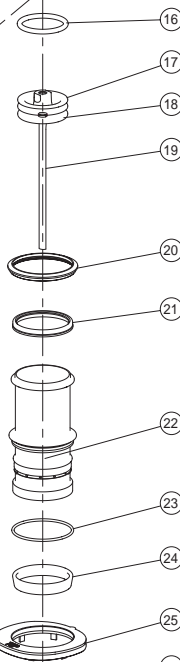
12-15 IN LBS.
OF TORQUE
(14-17 CM-KG)
2 PLACES



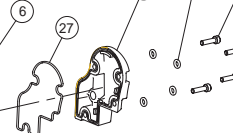
300-330 IN LBS.
OF TORQUE
(346-380 CM-KG)
4 PLACES



ITEM 18 PISTON/DRIVER ASSEMBLY
INCLUDES ITEM 17 & ITEM 19

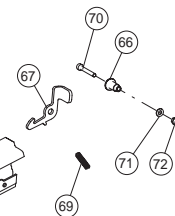


60-70 IN LBS.
OF TORQUE
(69-81 CM-KG)

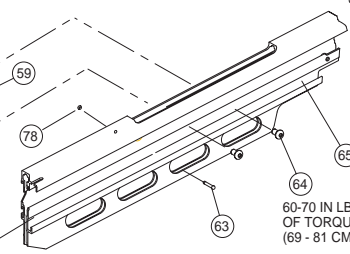


60-70 IN LBS.
OF TORQUE
(69-81 CM-KG)
4 PLACES

30-45 IN LBS.
OF TORQUE
(35-52 CM-KG)

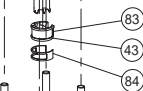


60-70 IN LBS.
OF TORQUE
(69 - 81 CM KG)



(85) — NOT SHOWN

ITEM 43 TRIP FOOT ASSEMBLY
INCLUDES ITEMS 83 & 84.



N88RH17-2

PNEUMATIC STICK NAILER

CLAVADORA NEUMÁTICA ALIMENTADA POR BARRA

CLOUEUR PNEUMATIQUE EN BANDES

See reverse side for available accessories (not included)

Item#	Illus. #	Description
MSF8125-25	<u>1</u>	SCREW, SFHCS M8 X 1.25X25
108555	<u>2</u>	MOUNT,SHOCK
112633	<u>3</u>	COVER,EXHAUST
116961	<u>4</u>	SEAL,COVER EXHAUST
108418	<u>5</u>	SPACER,COVER EXHAUST
MSC6100-30	<u>6</u>	SCREW,SHCS,M6X1.00X30
MPW6.3	<u>7</u>	WASHER,PWN M6
108559	<u>8</u>	CAP,MACHINING
108416	<u>9</u>	SEAL,FRAME
103859	<u>10</u>	NUT,HFN,M8X1.25
107236	<u>11</u>	BUMPER,PISTON STOP
107235	<u>12</u>	SPRING,COMPRESSION
112635	<u>13</u>	O-RING,1.988X.118
107234	<u>14</u>	HEAD VALVE
107658	<u>15</u>	O-RING,2.512X.118
851606	<u>16</u>	O-RING,1.850X.210
158582	<u>17</u>	ASSEMBLY,PISTON/DRIVER,RH
158547	<u>18</u>	PISTON,MAIN,RH FLANGED
158548	<u>19</u>	DRIVER,RH FLANGED
107142	<u>20</u>	RETAINER,CYLINDER SLEEVE
107141	<u>21</u>	SEAL,CYLINDER SLEEVE
144625	<u>22</u>	SLEEVE,CYLINDER
89673	<u>23</u>	O-RING,2.550X.103
175520	<u>24</u>	SEAL,CHECK
108563	<u>25</u>	RING,CYLINDER SLEEVE
108718	<u>26</u>	O-RING,3.484X.139
108560	<u>27</u>	SEAL,END CAP
108722	<u>28</u>	CAP,END
T50118	<u>29</u>	WASHER,PLAIN
MSC5080-20	<u>30</u>	SCREW,SOC HD. CAP M5 X 20
112733	<u>31</u>	PROTECTOR,FRAME
MHE3050-100	<u>32</u>	NUT,NYLON M3X.50
144320	<u>34</u>	FRAME,OVERMOLD
107231	<u>35</u>	BUMPER,DRIVE
MSC4070-12	<u>36</u>	SCREW,SHCS,M4X0.70X12
112632	<u>37</u>	BUSHING,TRIP COVER
116969	<u>38</u>	COVER,TRIP
116966	<u>39</u>	ARM,UPPER CONTACT
159971	<u>40</u>	NOSE
116970	<u>41</u>	SPRING,CONTACT ARM
159972	<u>42</u>	CASTING,HOUSING CONTACT
121072	<u>43</u>	ASSEMBLY,TRIP FOOT
MSC8125-28	<u>44</u>	SCREW,SHCS M8X28
108227	<u>45</u>	ARM,LOWER CONTACT
108225	<u>46</u>	CASTING,PLUNGER
115230	<u>47</u>	SPRING,HOUSING
116964	<u>48</u>	LABEL,MAGNESIUM
112629	<u>49</u>	GUIDE,ARM
100387	<u>50</u>	SPRING,COMPRESSION
107582	<u>52</u>	ASSEMBLY,S.T. TRIGGER
110115	<u>53</u>	KIT,TRIGGER VALVE

108562	<u>54</u>	SCREW, TRIGGER PIVOT
100298	<u>55</u>	PIN, SPIRAL M3X30
MPP030020	<u>56</u>	PIN, SPIRAL M3X20MM
MPW6.2	<u>57</u>	WASHER, SPECIAL
123859	<u>58</u>	BUSHING, FLANGED ISOLATION
MHE6100-100	<u>59</u>	NUT, ESN M6X1
159973	<u>60</u>	BRACKET, N88RH17
121407	<u>63</u>	PIN, SPECIAL
MSB6100-12	<u>64</u>	SCREW, SBHCS, M6X1.00X12
160168	<u>65</u>	MAGAZINE, N88RH17
121472	<u>66</u>	SPACER, PUSHER LATCH
120875	<u>67</u>	LATCH, PUSHER
159974	<u>68</u>	CAP END, MAGAZINE
120878	<u>69</u>	SPRING, PUSHER LATCH
100261	<u>70</u>	SCREW, SHCS, M4X30
MPW4	<u>71</u>	WASHER, PWN, M4
MHE4070-100	<u>72</u>	ELASTIC STOP NUT, M4
159976	<u>73</u>	LINER, NAIL GUIDE
115143	<u>74</u>	SPRING, CONSTANT FORCE
120945	<u>75</u>	HANDLE, PUSHER
159975	<u>76</u>	PUSHER
100209	<u>77</u>	SCREW, STRHS, M3X0.5X12
89013	<u>78</u>	O-RING, .056X.060
112630	<u>80</u>	SHIELD, DUST
112631	<u>81</u>	SPRING, CLIP
121070	<u>83</u>	FOOT, TRIP
121071	<u>84</u>	CLIP, TRIP FOOT