

BOSTITCH®

S97125 INDUSTRIAL OIL-FREE STAPLER



TOOL PARTS ILLUSTRATION ILUSTRACIÓN DE LAS PIEZAS DE LA HERRAMIENTA ILLUSTRATION DES PIÈCES D'OUTILLAGE

⚠ WARNING:

⚠ ATTENTION:

⚠ ADVERTENCIA:

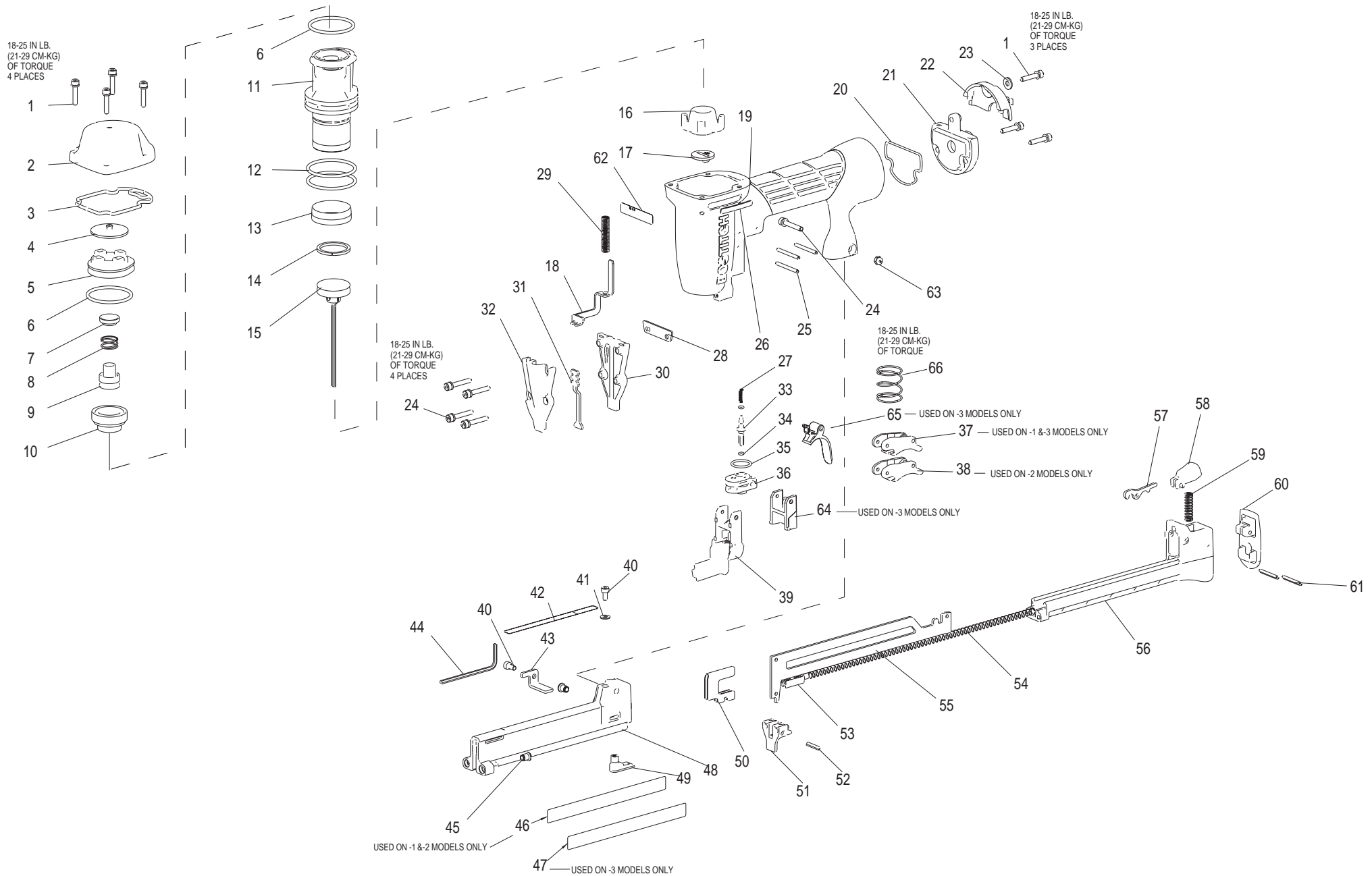
BEFORE PERFORMING REPAIRS ON THIS TOOL, ALL OPERATORS SHOULD STUDY THIS ILLUSTRATION, AS WELL AS THE PARTS LIST AND OPERATION AND MAINTENANCE MANUAL. OPERATORS SHOULD UNDERSTAND AND FOLLOW ALL SAFETY WARNINGS AND INSTRUCTIONS. KEEP THIS ILLUSTRATION WITH THE TOOL FOR FUTURE REFERENCE. IF YOU HAVE ANY QUESTIONS, CONTACT YOUR BOSTITCH REPRESENTATIVE OR DISTRIBUTOR.

ANTES DE LLEVAR A CABO CUALQUIER REPARACIÓN EN LA HERRAMIENTA, TODOS LOS OPERARIOS DEBERÁN ESTUDIAR ESTA ILUSTRACIÓN, ASÍ COMO LA LISTA DE PIEZAS Y EL MANUAL DE OPERACIÓN Y MANTENIMIENTO. LOS OPERARIOS DEBERÁN ENTENDER Y SEGUIR TODAS LAS ADVERTENCIAS E INSTRUCCIONES DE SEGURIDAD. CONSERVE ESTA ILUSTRACIÓN CON LA HERRAMIENTA PARA PODER CONSULTARLA EN LO FUTURO. SI TUVIERA ALGUNA PREGUNTA, PÓNGASE EN CONTACTO CON SU REPRESENTANTE O DISTRIBUIDOR DE BOSTITCH.

AVANT DE PROCÉDER À LA RÉPARATION DE CET OUTIL, LES OPÉRATEURS DOIVENT ÉTUDIER LA PRÉSENTE ILLUSTRATION AINSI QUE LA LISTE DE PIÈCES ET LE MANUEL D'INSTRUCTIONS ET D'ENTRETIEN ; ILS DOIVENT ÉGALEMENT COMPRENDRE ET OBSERVER LES CONSIGNES DE SÉCURITÉ ET LES INSTRUCTIONS. CONSERVER CETTE ILLUSTRATION AVEC L'OUTIL POUR RÉFÉRENCE FUTURE. SI VOUS AVEZ DES QUESTIONS, COMMUNIQUEZ AVEC VOTRE REPRÉSENTANT OU VOTRE DISTRIBUTEUR DE BOSTITCH.

S97125

INDUSTRIAL OIL-FREE STAPLER



Item#	Illus. #	Description
121051	<u>1</u>	SCREW,SHCS,M4X0.70X20
120997	<u>2</u>	CAP,FRAME
113337	<u>3</u>	SEAL,FRAME/CAP
160186	<u>4</u>	SEAL, TOP
160187	<u>5</u>	HOLD DOWN,HEADVALVE
101058	<u>6</u>	O-RING,1.487X.103
120989	<u>7</u>	SEAL,INSERT
120991	<u>8</u>	SPRING,HEADVALVE
120032	<u>9</u>	INSERT,HEADVALVE
120027	<u>10</u>	DIAPHRAM,HEAD VALVE
121007	<u>11</u>	SLEEVE,CYLINDER
RG161210	<u>12</u>	O-RING,1.612X.103 NBR
120061	<u>13</u>	SEAL,CHECK
S32019	<u>14</u>	BUMPER, LOWER IS 102882
158741	<u>15</u>	ASSEMBLY,PISTON/DRIVER
171415	<u>16</u>	BUMPER
152363	<u>17</u>	GUIDE,DRIVER
120022	<u>18</u>	TRIP,UPPER
121004	<u>19</u>	FRAME,OVERMOLD
121035	<u>20</u>	SEAL,FRAME END CAP
121031	<u>21</u>	CAP,END BOTTOM
121032	<u>22</u>	DEFLECTOR,CAP END
PW8	<u>23</u>	WASHER,PWR,.188
121052	<u>24</u>	SCREW,SHCS,M4X0.70X25
100298	<u>25</u>	PIN, SPIRAL M3X30
142961	<u>26</u>	LABEL,MAGNESIUM
N86115	<u>27</u>	COMPRESSION SPRING
120098	<u>28</u>	PLATE,DRIVER
121024	<u>29</u>	SPRING,TRIP
158746	<u>30</u>	NOSE
158606	<u>31</u>	ARM,LOWER CONTACT
158747	<u>32</u>	COVER,TRIP
121029	<u>33</u>	STEM,VALVE
MRG002514	<u>34</u>	O-RING,.098X.055
850144	<u>35</u>	O-RING,.614X.070
121005	<u>36</u>	HOUSING,VALVE
CNTK1	<u>37</u>	KIT,CONTACT TRIP CONVERSION
SEQ4	<u>38</u>	KIT,SEQUENTIAL TRIP CONVERSION
120020	<u>39</u>	GUIDE,ARM
MSC4070-8	<u>40</u>	SCREW,SHCS,M4X0.70X8
MPW4	<u>41</u>	WASHER,PWN,M4
116941	<u>43</u>	STOP,CORE
121036	<u>44</u>	KEY,HEXAGON 3MM
S32011	<u>45</u>	INSERT,M4
158612	<u>46</u>	LABEL,WARNING
158613	<u>47</u>	LABEL,WARNING NO C.T.
152282	<u>48</u>	MAGAZINE,FIXED
121284	<u>49</u>	STOP,LATCH
149736	<u>50</u>	PUSHER LHF
165351	<u>51</u>	TIP,CORE
125357	<u>52</u>	PIN, SPIRAL, 1/8X5/8 LG. HD

152272	<u>53</u>	SHUTTLE,PUSHER
101069	<u>54</u>	SPRING,PUSHER
165350	<u>55</u>	CORE
171274	<u>56</u>	MAGAZINE,SLIDE
116933	<u>57</u>	LATCH
167189	<u>58</u>	LATCH,COVER
113579	<u>59</u>	SPRING,LATCH
125262	<u>60</u>	BUMPER,REAR
159968	<u>61</u>	PIN,COILED,HD,M3X25
159813	<u>62</u>	LABEL,S97125
MHE4070-100	<u>63</u>	ELASTIC STOP NUT,M4
121008	<u>64</u>	STOP,TRIGGER
159884	<u>65</u>	ASSEMBLY,SECOND TRIGGER
100387	<u>66</u>	SPRING,COMPRESSION