

Available Accessories:

CNTK1 Contact trigger conversion kit
SEQ4 Sequential trigger conversion kit

BOSTITCH®

SL1250C

INDUSTRIAL OIL-FREE STAPLER
GRAPADORA INDUSTRIAL SIN ACEITE
AGRAFEUSE INDUSTRIELLE SANS HUILE



TOOL PARTS ILLUSTRATION
ILUSTRACIÓN DE LAS PIEZAS DE LA HERRAMIENTA
ILLUSTRATION DES PIÈCES D'OUTILLAGE

▲WARNING:

▲ADVERTENCIA:

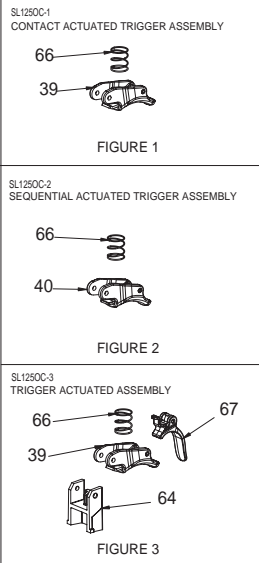
▲ATTENTION:

BEFORE PERFORMING REPAIRS ON THIS TOOL, ALL OPERATORS SHOULD STUDY THIS ILLUSTRATION, AS WELL AS THE PARTS LIST AND OPERATION AND MAINTENANCE MANUAL. OPERATORS SHOULD UNDERSTAND AND FOLLOW ALL SAFETY WARNINGS AND INSTRUCTIONS. KEEP THIS ILLUSTRATION WITH THE TOOL FOR FUTURE REFERENCE. IF YOU HAVE ANY QUESTIONS, CONTACT YOUR BOSTITCH REPRESENTATIVE DISTRIBUTOR.

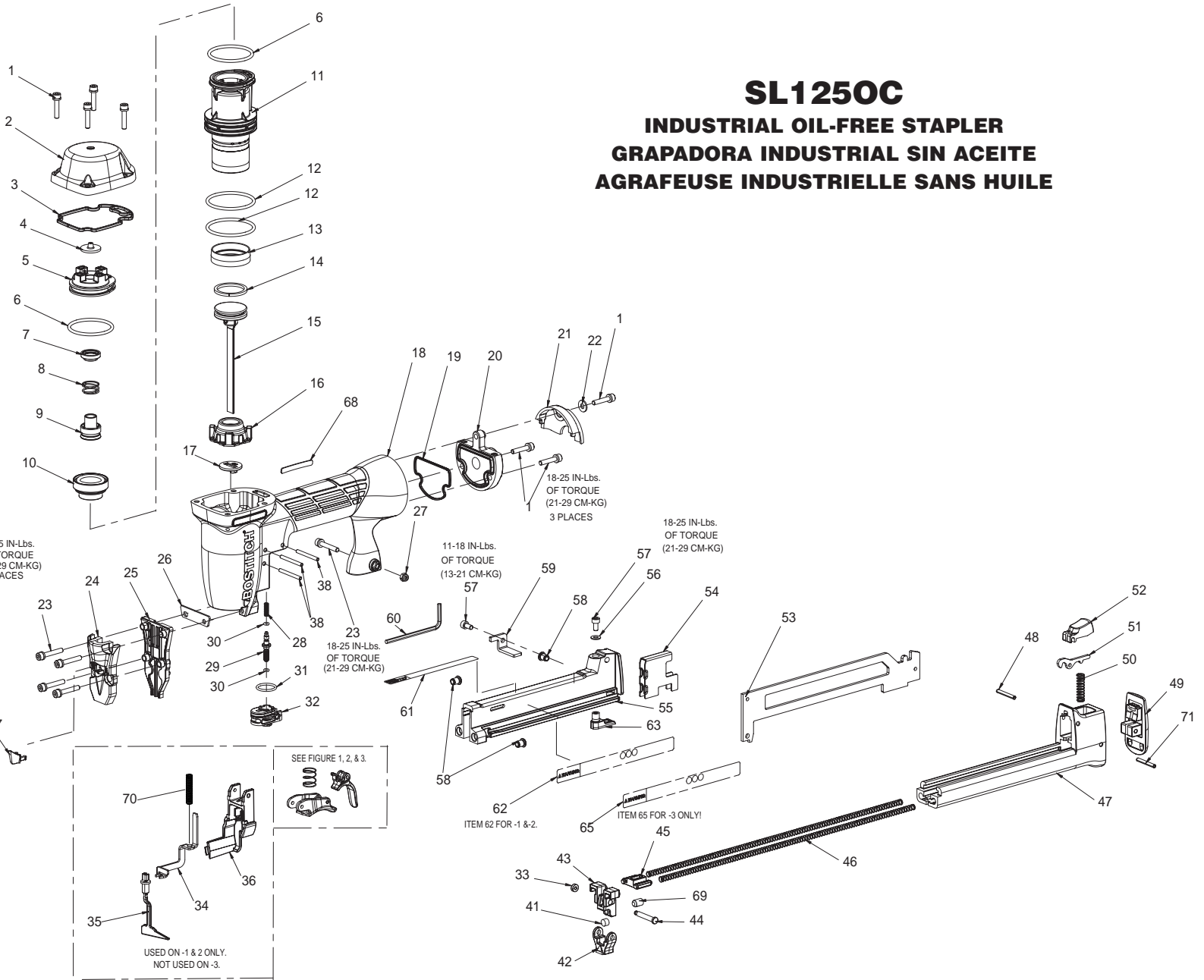
ANTES DE LLEVAR A CABO CUALQUIER REPARACIÓN EN LA HERRAMIENTA, TODOS LOS OPERARIOS DEBERÁN ESTUDIAR ESTA ILUSTRACIÓN, ASÍ COMO LA LISTA DE PIEZAS Y EL MANUAL DE OPERACIÓN Y MANTENIMIENTO. LOS OPERARIOS DEBERÁN ENTENDER Y SEGUIR TODAS LAS ADVERTENCIAS E INSTRUCCIONES DE SEGURIDAD. CONSERVE ESTA ILUSTRACIÓN CON LA HERRAMIENTA PARA PODER CONSULTARLA EN LO FUTURO. SI TUVIERA ALGUNA PREGUNTA, PÓNGASE EN CONTACTO CON SU REPRESENTANTE O DISTRIBUIDOR DE BOSTITCH.

AVANT DE PROCÉDER À LA RÉPARATION DE CET OUTIL, LES OPÉRATEURS DOIVENT ÉTUDIER LA PRÉSENTE ILLUSTRATION AINSI QUE LA LISTE DE PIÈCES ET LE MANUEL D'INSTRUCTIONS ET D'ENTRETIEN ; ILS DOIVENT ÉGALEMENT COMPRENDRE ET OBSERVER LES CONSIGNES DE SÉCURITÉ ET LES INSTRUCTIONS. CONSERVER CETTE ILLUSTRATION AVEC L'OUTIL POUR RÉFÉRENCE FUTURE. SI VOUS AVEZ DES QUESTIONS, COMMUNIQUEZ AVEC VOTRE REPRÉSENTANT OU VOTRE DISTRIBUTEUR DE BOSTITCH.

BOSTITCH®
STANLEY FASTENING SYSTEMS



18-25 IN-Lbs.
OF TORQUE
(21-29 CM-KG)
4 PLACES



SL1250C

INDUSTRIAL OIL-FREE STAPLER

GRAPADORA INDUSTRIAL SIN ACEITE

AGRAFEUSE INDUSTRIELLE SANS HUILE

Item#	Illus. #	Description
IP1188-1REVD	<u>0</u>	ILLUSTRATION,SL125OC
121051	<u>1</u>	SCREW,SHCS,M4X0.70X20
120997	<u>2</u>	CAP,FRAME
113337	<u>3</u>	SEAL,FRAME/CAP
160186	<u>4</u>	SEAL, TOP
160187	<u>5</u>	HOLD DOWN,HEADVALVE
101058	<u>6</u>	O-RING,1.487X.103
120989	<u>7</u>	SEAL,INSERT
120991	<u>8</u>	SPRING,HEADVALVE
120032	<u>9</u>	INSERT,HEADVALVE
120027	<u>10</u>	DIAPHRAM,HEAD VALVE
121007	<u>11</u>	SLEEVE,CYLINDER
RG161210	<u>12</u>	O-RING,1.612X.103 NBR
120061	<u>13</u>	SEAL,CHECK
S32109	<u>14</u>	RING,PISTON
173926	<u>15</u>	ASSEMBLY,PISTON/DRIVER
171415	<u>16</u>	BUMPER
121030	<u>17</u>	GUIDE,DRIVER
121004	<u>18</u>	FRAME,OVERMOLD
121035	<u>19</u>	SEAL,FRAME END CAP
121031	<u>20</u>	CAP,END BOTTOM
PW8	<u>22</u>	WASHER,PWR,.188
121052	<u>23</u>	SCREW,SHCS,M4X0.70X25
159872	<u>24</u>	COVER,TRIP
165422	<u>25</u>	NOSE,SL125OC
121279	<u>26</u>	PLATE,DRIVER
MHE4070-100	<u>27</u>	ELASTIC STOP NUT,M4
N86115	<u>28</u>	COMPRESSION SPRING
121029	<u>29</u>	STEM,VALVE
MRG002514	<u>30</u>	O-RING,.098X.055
850144	<u>31</u>	O-RING,.614X.070
121005	<u>32</u>	HOUSING,VALVE
854004	<u>33</u>	WASHER,RUBBER-7
120022	<u>34</u>	TRIP,UPPER
159806	<u>35</u>	ASSEMBLY,LOWER ARM
120020	<u>36</u>	GUIDE,ARM
121013	<u>37</u>	PLUG,COVER
100298	<u>38</u>	PIN,SPIRAL M3X30
CNTK1	<u>39</u>	KIT,CONTACT TRIP CONVERSION
SEQ4	<u>40</u>	KIT,SEQUENTIAL TRIP CONVERSION
159804	<u>41</u>	SPRING,URETHANE
165421	<u>42</u>	ANVIL,SL125OC
159807	<u>43</u>	TIP,CORE
159808	<u>44</u>	PIN,ANVIL
158736	<u>45</u>	SHUTTLE,PUSHER
174359	<u>46</u>	SPRING,PUSHER
159968	<u>48</u>	PIN,COILED,HD,M3X25
113579	<u>50</u>	SPRING,LATCH
116933	<u>51</u>	LATCH
167189	<u>52</u>	LATCH,COVER

165420	<u>53</u>	CORE,SL125OC
119279	<u>54</u>	PUSHER
119317	<u>55</u>	MAGAZINE,FIXED
MPW4	<u>56</u>	WASHER,PWN,M4
MSC4070-8	<u>57</u>	SCREW,SHCS,M4X0.70X8
S32011	<u>58</u>	INSERT,M4
116941	<u>59</u>	STOP,CORE
121036	<u>60</u>	KEY,HEXAGON 3MM
121287	<u>61</u>	LABEL,FASTENER SPEC.'S (SL150)
158612	<u>62</u>	LABEL,WARNING
121284	<u>63</u>	STOP,LATCH
121008	<u>64</u>	STOP,TRIGGER
158613	<u>65</u>	LABEL,WARNING NO C.T.
100387	<u>66</u>	SPRING,COMPRESSION
159884	<u>67</u>	ASSEMBLY,SECOND TRIGGER
142961	<u>68</u>	LABEL,MAGNESIUM
160006	<u>69</u>	SCREW,CUPSS 1/4-28X3/8 PATCH
121024	<u>70</u>	SPRING,TRIP
165423	<u>71</u>	PIN,COILED,HD,M4X26