

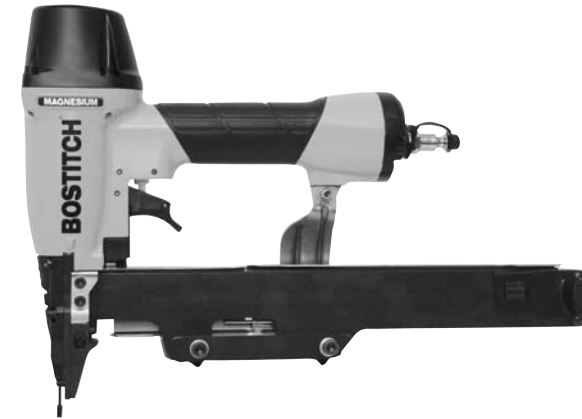
**Available Accessories:**

**CNTK-1 Contact trigger conversion kit  
SEQ4 Sequential trigger conversion kit**

# BOSTITCH®

## SL150LM

**INDUSTRIAL OIL-FREE STAPLER  
GRAPADORA INDUSTRIAL SIN ACEITE  
AGRAFEUSE INDUSTRIELLE SANS HUILE**



**TOOL PARTS ILLUSTRATION  
ILUSTRACIÓN DE LAS PIEZAS DE LA HERRAMIENTA  
ILLUSTRATION DES PIÈCES D'OUTILLAGE**

**⚠WARNING:**

**⚠ADVERTENCIA:**

**⚠ATTENTION:**

BEFORE PERFORMING REPAIRS ON THIS TOOL, ALL OPERATORS SHOULD STUDY THIS ILLUSTRATION, AS WELL AS THE PARTS LIST AND OPERATION AND MAINTENANCE MANUAL. OPERATORS SHOULD UNDERSTAND AND FOLLOW ALL SAFETY WARNINGS AND INSTRUCTIONS. KEEP THIS ILLUSTRATION WITH THE TOOL FOR FUTURE REFERENCE. IF YOU HAVE ANY QUESTIONS, CONTACT YOUR BOSTITCH REPRESENTATIVE DISTRIBUTOR.

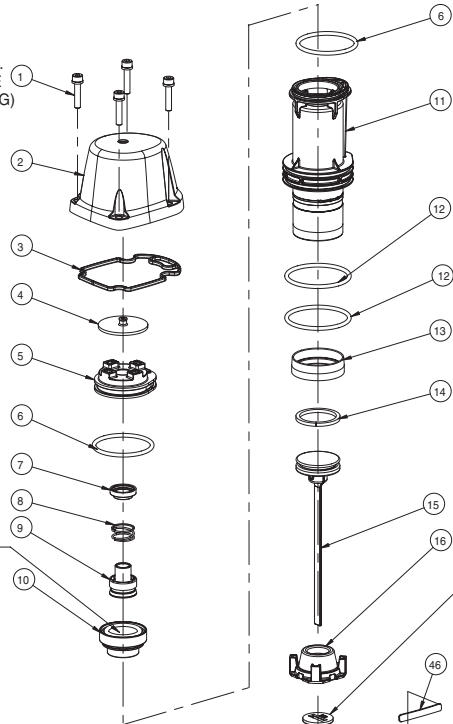
ANTES DE LLEVAR A CABO CUALQUIER REPARACIÓN EN LA HERRAMIENTA, TODOS LOS OPERARIOS DEBERÁN ESTUDIAR ESTA ILUSTRACIÓN, ASÍ COMO LA LISTA DE PIEZAS Y EL MANUAL DE OPERACIÓN Y MANTENIMIENTO. LOS OPERARIOS DEBERÁN ENTENDER Y SEGUIR TODAS LAS ADVERTENCIAS E INSTRUCCIONES DE SEGURIDAD. CONSERVE ESTA ILUSTRACIÓN CON LA HERRAMIENTA PARA PODER CONSULTARLA EN LO FUTURO. SI TUVIERA ALGUNA PREGUNTA, PÓNGASE EN CONTACTO CON SU REPRESENTANTE O DISTRIBUIDOR DE BOSTITCH.

AVANT DE PROCÉDER À LA RÉPARATION DE CET OUTIL, LES OPÉRATEURS DOIVENT ÉTUDIER LA PRÉSENTE ILLUSTRATION AINSI QUE LA LISTE DE PIÈCES ET LE MANUEL D'INSTRUCTIONS ET D'ENTRETIEN ; ILS DOIVENT ÉGALEMENT COMPRENDRE ET OBSERVER LES CONSIGNES DE SÉCURITÉ ET LES INSTRUCTIONS. CONSERVER CETTE ILLUSTRATION AVEC L'OUTIL POUR RÉFÉRENCE FUTURE. SI VOUS AVEZ DES QUESTIONS, COMMUNIQUEZ AVEC VOTRE REPRÉSENTANT OU VOTRE DISTRIBUTEUR DE BOSTITCH.

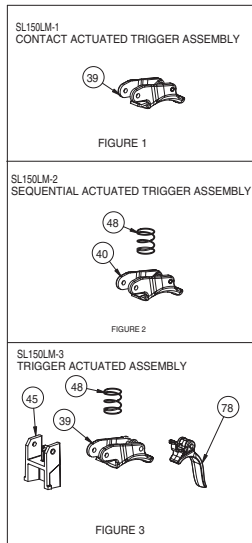
# SL150LM

**INDUSTRIAL OIL-FREE STAPLER**  
**GRAPADORA INDUSTRIAL SIN ACEITE**  
**AGRAFEUSE INDUSTRIELLE SANS HUILE**

18-25 IN-Lbs.  
OF TORQUE  
(21-29 CM-KG)  
4 PLACES



APPLY GREASE ON THIS INSIDE SURFACE OF DIAPHRAM (ITEM 10) APPROXIMATELY 3/16" DOWN, WHERE IT MATES WITH THE INSERT (ITEM 9).



INSTALL ITEM 23 USING LOCTITE #242 OR EQUIVALENT & TORQUE TO: 18-25 IN-Lbs. OF TORQUE (21-29 CM-KG) 2 PLACES

INSTALL ITEM 1 USING LOCTITE #242 OR EQUIVALENT & TORQUE TO: 18-25 IN-Lbs. OF TORQUE (21-29 CM-KG) 2 PLACES

USED ON -3 ONLY!

NON ADJUSTABLE TRIP REPLACES ITEMS: 35, 36, 37 ITEM#33 STILL REQUIRED

USED ON -2 ONLY!  
NOT USED ON -1 & -3

ITEMS 22, 34, 35, 36 & 37 ARE USED ON -1 & -2 ONLY!  
NOT USED ON -3.

SEE FIGURE 1, 2, & 3.

ITEM 52 INCLUDES ITEMS 71, 72, 73, 74 & 62. ITEMS 72 & 62 ARE WELDED TO ITEM 71.

ITEM 52 IS SHOWN HERE IN THE STORAGE LOCATION IF CORE NEEDS TO BE SHIFTED OVER TO PROPERLY LINE UP WITH THE DRIVE CHANNEL IN THE NOSE MOVE ONE OR BOTH TO THE OPPOSITE SIDE OF ITEM 52.

18-25 IN-Lbs. OF TORQUE (21-29 CM-KG) 3 PLACES

ITEM 75 FOR -1 & -2.

ITEM 76 FOR -3 ONLY!

INSTALL ITEM 55 USING LOCTITE #242 OR EQUIVALENT & TORQUE TO: 18-25 IN-Lbs. OF TORQUE (21-29 CM-KG) 4 PLACES

ASSEMBLE ITEM 67 INTO HOLE IN ITEM 51 AND INTO COUNTERBORE OF ITEM 68.

ASSEMBLE END LOOP OF ITEM 66 OVER ITEM 69, THEN ASSEMBLE ITEM 42 OVER ITEM 69 TO PREVENT ITEM 66 FROM FALLING OFF ITEM 69.

18-25 IN-Lbs. OF TORQUE (21-29 CM-KG) 2 PLACES

60-70 IN-Lbs. OF TORQUE (69-81 CM-KG) 2 PLACES

Item#	Illus. #	Description
121051	<u>1</u>	SCREW,SHCS,M4X0.70X20
120996	<u>2</u>	CAP,FRAME
113337	<u>3</u>	SEAL,FRAME/CAP
160186	<u>4</u>	SEAL, TOP
160187	<u>5</u>	HOLD DOWN,HEADVALVE
101058	<u>6</u>	O-RING,1.487X.103
120989	<u>7</u>	SEAL,INSERT
120991	<u>8</u>	SPRING,HEADVALVE
120032	<u>9</u>	INSERT,HEADVALVE
120027	<u>10</u>	DIAPHRAM,HEAD VALVE
120028	<u>11</u>	SLEEVE,BT200
RG161210	<u>12</u>	O-RING,1.612X.103 NBR
120061	<u>13</u>	SEAL,CHECK
S32109	<u>14</u>	RING,PISTON
121276	<u>15</u>	ASSEMBLY,PISTON/DRIVER,SL
171415	<u>16</u>	BUMPER
121030	<u>17</u>	GUIDE,DRIVER
149769	<u>18</u>	FRAME,SX/SL LONG MAG
121035	<u>19</u>	SEAL,FRAME END CAP
121031	<u>20</u>	CAP,END BOTTOM
121032	<u>21</u>	DEFLECTOR,CAP END
149786	<u>22</u>	GUIDE,ARM
121052	<u>23</u>	SCREW,SHCS,M4X0.70X25
120058	<u>24</u>	COVER,TRIP
121282	<u>25</u>	NOSE
121279	<u>26</u>	PLATE,DRIVER
MHE4070-100	<u>27</u>	ELASTIC STOP NUT,M4
N86115	<u>28</u>	COMPRESSION SPRING
121029	<u>29</u>	STEM,VALVE
MRG002514	<u>30</u>	O-RING,.098X.055
850144	<u>31</u>	O-RING,.614X.070
121005	<u>32</u>	HOUSING,VALVE
121024	<u>33</u>	SPRING,TRIP
120022	<u>34</u>	TRIP,UPPER
171429	<u>35</u>	ASSEMBLY,LOWER ARM
120024	<u>36</u>	THUMBWHEEL
120056	<u>37</u>	CONTACT FOOT,NO MAR
100298	<u>38</u>	PIN,SPIRAL M3X30
CNTK1	<u>39</u>	KIT,CONTACT TRIP CONVERSION
107582	<u>40</u>	ASSEMBLY,S.T.TRIGGER
121013	<u>41</u>	PLUG,COVER
107527	<u>42</u>	SPRING,COMP-TRIP ADJ.
121008	<u>45</u>	STOP,TRIGGER
142961	<u>46</u>	LABEL,MAGNESIUM
MSC4070-12	<u>47</u>	SCREW,SHCS,M4X0.70X12
100387	<u>48</u>	SPRING,COMPRESSION
PW8	<u>49</u>	WASHER,PWR,.188
158334	<u>50</u>	ASSY,SL LONG MAGAZINE
158345	<u>51</u>	ASSEMBLY, TOP GUIDE
158347	<u>52</u>	ASSY,BRACKET,COVER & PULLEY
149775	<u>53</u>	BLOCK,MTG-RIGHT,SL

149781	<u>54</u>	BLOCK,MTG-LEFT,SL
MSC4070-8	<u>55</u>	SCREW,SHCS,M4X0.70X8
149788	<u>56</u>	PUSHER,SL LONG MAG
MHE6100-100	<u>58</u>	NUT,ESN M6X1
105973	<u>59</u>	SPACER
MSC6100-25	<u>61</u>	SCREW,SHCS,M6X1.00X25
158356	<u>62</u>	PLATE,SPACER
158355	<u>63</u>	BUSHING,SLIDEWAY
MSB5080-10	<u>64</u>	SCREW,SBHCS,M5X0.80X10
105053	<u>65</u>	LINK,SPRING
149777	<u>66</u>	SPRING,EXTENSION
103191	<u>67</u>	SPRING,COMPRESSION
149771	<u>68</u>	BLOCK,PIVOT
106063	<u>69</u>	STUD
158354	<u>70</u>	PLATE,CLAMPING
124032	<u>71</u>	BRACKET,LM MTG
149768	<u>72</u>	COVER,LM FIXED
149772	<u>73</u>	PULLEY
104149	<u>74</u>	STUD,SPRING PULLEY
158612	<u>75</u>	LABEL,WARNING
158613	<u>76</u>	LABEL,WARNING NO C.T.
121287	<u>77</u>	LABEL,FASTENER SPEC.'S (SL150)
159884	<u>78</u>	ASSEMBLY,SECOND TRIGGER
171085	<u>80</u>	ARM,LOWER CONTACT