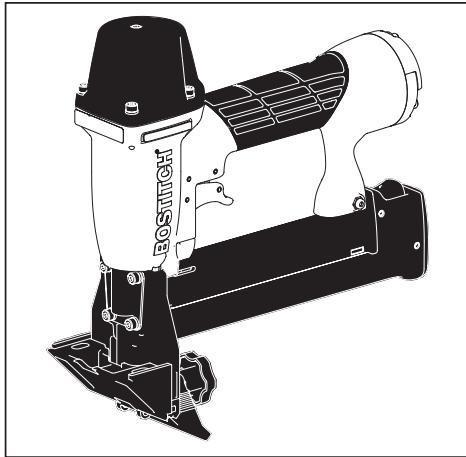


BOSTITCH®

Available Accessories:

SX150-BHF

INDUSTRIAL OIL-FREE FLOORING STAPLER



**TOOL PARTS ILLUSTRATION
ILUSTRACIÓN DE LAS PIEZAS DE LA HERRAMIENTA
ILLUSTRATION DES PIÈCES D'OUTILLAGE**

⚠ WARNING:

⚠ ADVERTENCIA:

⚠ ATTENTION:

BEFORE PERFORMING REPAIRS ON THIS TOOL, ALL OPERATORS SHOULD STUDY THIS ILLUSTRATION, AS WELL AS THE PARTS LIST AND OPERATION AND MAINTENANCE MANUAL. OPERATORS SHOULD UNDERSTAND AND FOLLOW ALL SAFETY WARNINGS AND INSTRUCTIONS. KEEP THIS ILLUSTRATION WITH THE TOOL FOR FUTURE REFERENCE. IF YOU HAVE ANY QUESTIONS, CONTACT YOUR BOSTITCH REPRESENTATIVE DISTRIBUTOR.

ANTES DE LLEVAR A CABO CUALQUIER REPARACIÓN EN LA HERRAMIENTA, TODOS LOS OPERARIOS DEBERÁN ESTUDIAR ESTA ILUSTRACIÓN, ASÍ COMO LA LISTA DE PIEZAS Y EL MANUAL DE OPERACIÓN Y MANTENIMIENTO. LOS OPERARIOS DEBERÁN ENTENDER Y SEGUIR TODAS LAS ADVERTENCIAS E INSTRUCCIONES DE SEGURIDAD. CONSERVE ESTA ILUSTRACIÓN CON LA HERRAMIENTA PARA PODER CONSULTARLA EN LO FUTURO. SI TUVIERA ALGUNA PREGUNTA, PONGASE EN CONTACTO CON SU REPRESENTANTE O DISTRIBUIDOR DE BOSTITCH.

AVANT DE PROCÉDER À LA RÉPARATION DE CET OUTIL, LES OPÉRATEURS DOIVENT ÉTUDIER LA PRÉSENTE ILLUSTRATION AINSI QUE LA LISTE DE PIÈCES ET LE MANUEL D'INSTRUCTIONS ET D'ENTRETIEN ; ILS DOIVENT ÉGALEMENT COMPRENDRE ET OBSERVER LES CONSIGNES DE SÉCURITÉ ET LES INSTRUCTIONS. CONSERVER CETTE ILLUSTRATION AVEC L'OUTIL POUR RÉFÉRENCE FUTURE. SI VOUS AVEZ DES QUESTIONS, COMMUNIQUEZ AVEC VOTRE REPRÉSENTANT OU VOTRE DISTRIBUTEUR DE BOSTITCH.

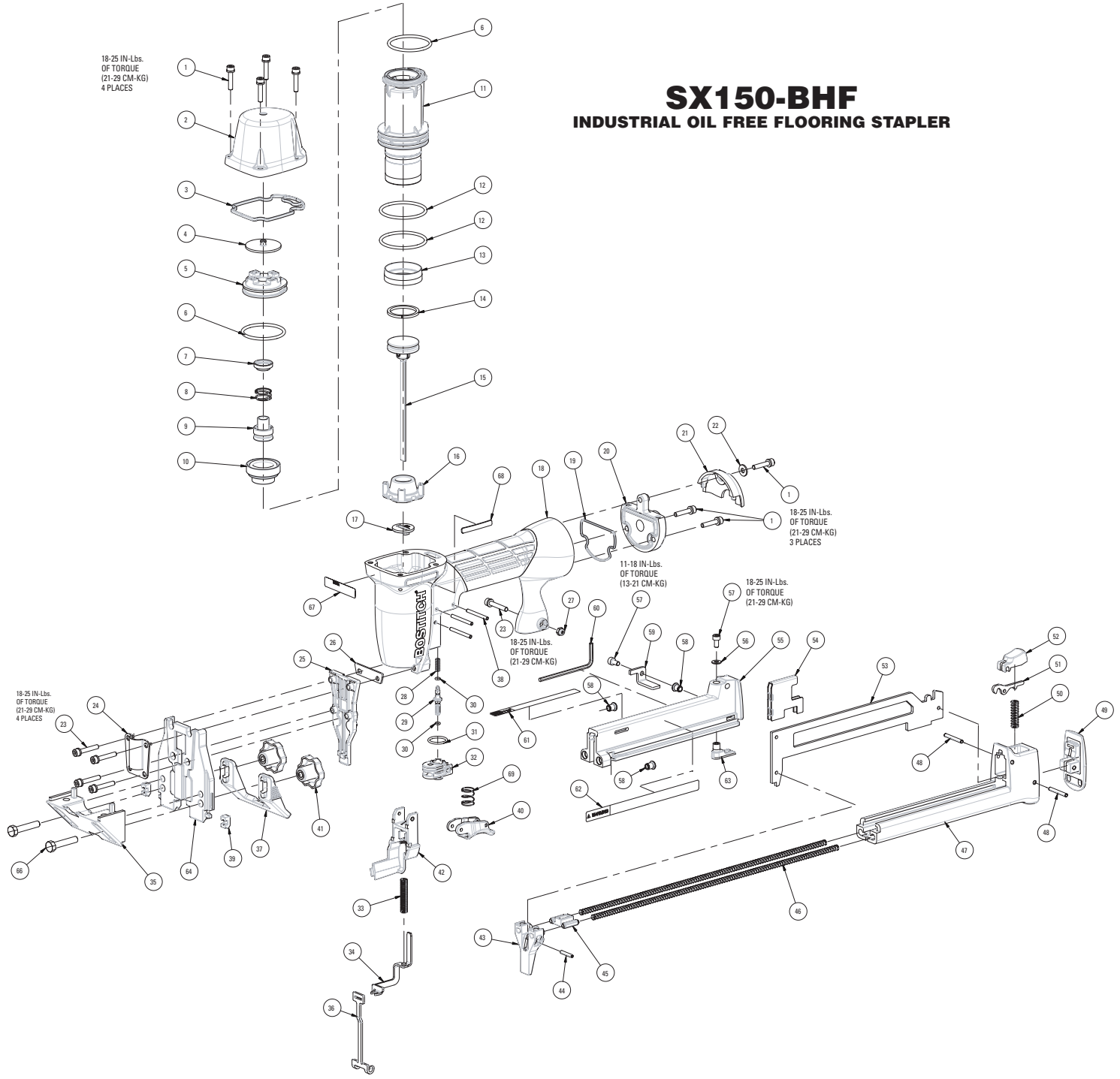
BOSTITCH®
Stanley Fastening Systems

IP1173-1REVB

Litho in U.S.A.

SX150-BHF

INDUSTRIAL OIL FREE FLOORING STAPLER



Item#	Illus. #	Description
121051	<u>1</u>	SCREW, SHCS, M4X0.70X20
120996	<u>2</u>	CAP, FRAME
113337	<u>3</u>	SEAL, FRAME/CAP
160186	<u>4</u>	SEAL, TOP
160187	<u>5</u>	HOLD DOWN, HEADVALVE
101058	<u>6</u>	O-RING, 1.487X.103
120989	<u>7</u>	SEAL, INSERT
120991	<u>8</u>	SPRING, HEADVALVE
120032	<u>9</u>	INSERT, HEADVALVE
120027	<u>10</u>	DIAPHRAM, HEAD VALVE
120028	<u>11</u>	SLEEVE, BT200
RG161210	<u>12</u>	O-RING, 1.612X.103 NBR
120061	<u>13</u>	SEAL, CHECK
S32109	<u>14</u>	RING, PISTON
173904	<u>15</u>	ASSEMBLY, PISTON/DRIVER
171415	<u>16</u>	BUMPER
121025	<u>17</u>	GUIDE, DRIVER
121004	<u>18</u>	FRAME, OVERMOLD
121035	<u>19</u>	SEAL, FRAME END CAP
121031	<u>20</u>	CAP, END BOTTOM
121032	<u>21</u>	DEFLECTOR, CAP END
PW8	<u>22</u>	WASHER, PWR, .188
121052	<u>23</u>	SCREW, SHCS, M4X0.70X25
158445	<u>24</u>	COVER, TRIP
121283	<u>25</u>	NOSE
121279	<u>26</u>	PLATE, DRIVER
MHE4070-100	<u>27</u>	ELASTIC STOP NUT, M4
N86115	<u>28</u>	COMPRESSION SPRING
121029	<u>29</u>	STEM, VALVE
MRG002514	<u>30</u>	O-RING, .098X.055
850144	<u>31</u>	O-RING, .614X.070
121005	<u>32</u>	HOUSING, VALVE
121024	<u>33</u>	SPRING, TRIP
120022	<u>34</u>	TRIP, UPPER
152118	<u>35</u>	ANGLE BLOCK, GUIDE
158595	<u>36</u>	ARM, LOWER CONTACT
158443	<u>37</u>	FOOT, ADJUSTABLE
100298	<u>38</u>	PIN, SPIRAL M3X30
158447	<u>39</u>	INSERT, NOSE
SEQ4	<u>40</u>	KIT, SEQUENTIAL TRIP CONVERSION
117397	<u>41</u>	KNOB, M6X1.0
120020	<u>42</u>	GUIDE, ARM
160189	<u>43</u>	TIP, CORE
160190	<u>44</u>	PIN, COILED, HD, M4X20
116953	<u>45</u>	SHUTTLE, PUSHER
S32065	<u>46</u>	SPRING, PUSHER
167187	<u>47</u>	MAGAZINE
159968	<u>48</u>	PIN, COILED, HD, M3X25
167188	<u>49</u>	BUMPER, REAR
113579	<u>50</u>	SPRING, LATCH

116933	<u>51</u>	LATCH
167189	<u>52</u>	LATCH,COVER
160188	<u>53</u>	CORE
119481	<u>54</u>	PUSHER
119480	<u>55</u>	MAGAZINE,FIXED
MPW4	<u>56</u>	WASHER,PWN,M4
MSC4070-8	<u>57</u>	SCREW,SHCS,M4X0.70X8
S32011	<u>58</u>	INSERT,M4
116941	<u>59</u>	STOP,CORE
121036	<u>60</u>	KEY,HEXAGON 3MM
121288	<u>61</u>	LABEL,FASTENER SPEC.'S (SX150)
158612	<u>62</u>	LABEL,WARNING
121284	<u>63</u>	STOP,LATCH
158594	<u>64</u>	PLATE,NOSE
100387	<u>65</u>	SPRING,COMPRESSION
117398	<u>66</u>	SCREW,HHCS,M6X1.0X30
142961	<u>68</u>	LABEL,MAGNESIUM