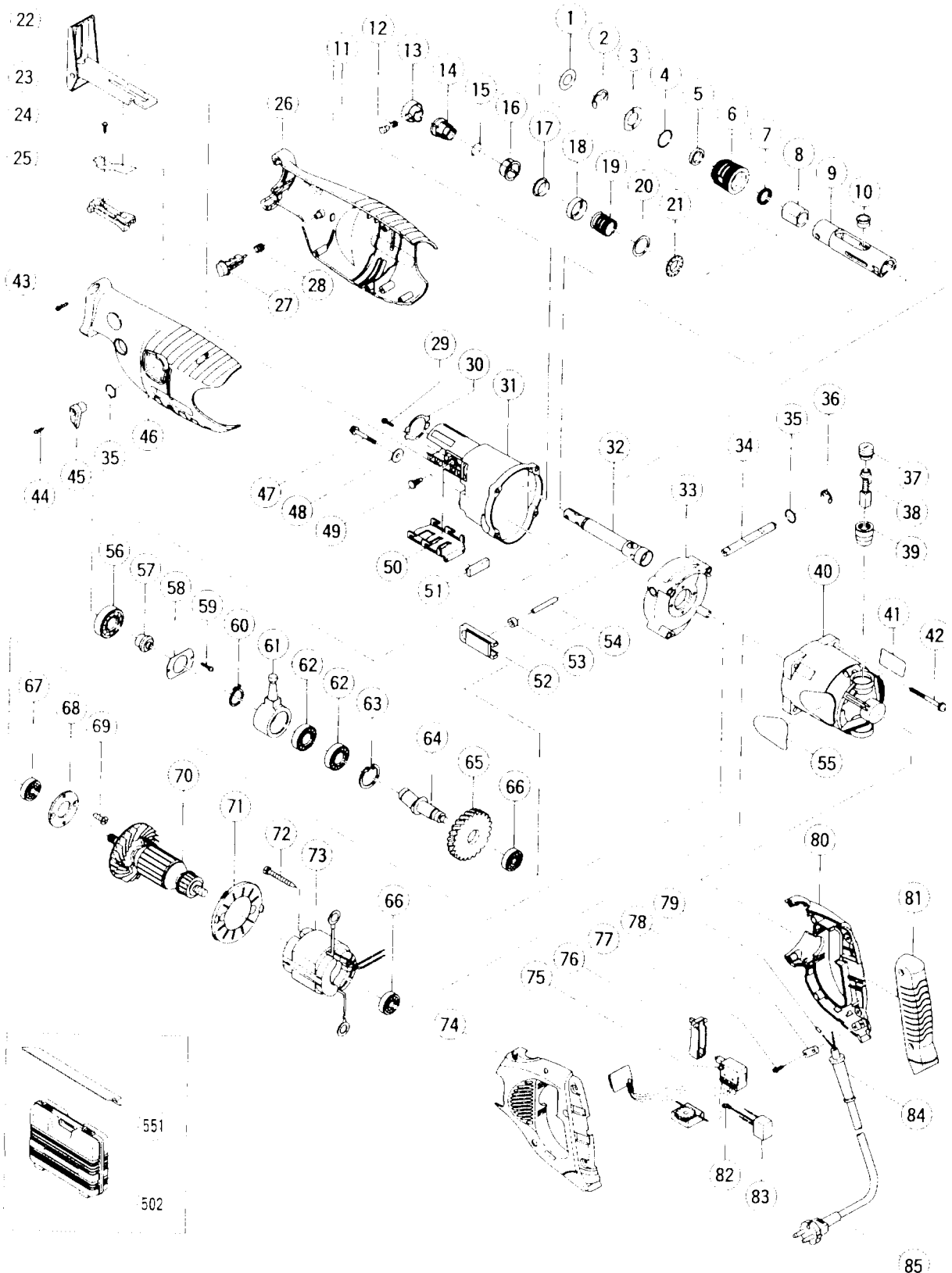


## ELECTRIC TOOL PARTS LIST

■ SABER SAW

2000 · 2 · 15

Model CR 13VA [For the U.S.A. and Canada only] (E1)



## PARTS

CR 13VA

ITEM NO.	CODE NO.	DESCRIPTION	NO. USED	REMARKS
1	318-484	WASHER (E)	1	
2	318-453	RETAINING RING (E-TYPE) FOR D14 SHAFT	1	
3	318-457	WASHER (F)	1	
4	878-609	O-RING (S-24)	1	
5	318-458	FELT WASHER	1	
6	318-460	SEAL SLEEVE	1	
7	318-459	V-RING	1	
8	318-463	METAL (A)	1	
9	318-462	GUIDE SLEEVE ASS'Y	1	INCLUD.8
10		PLUNGER SLEEVE	1	
11	318-481	HOLDER PIN	1	
12	318-483	SPRING (B)	1	
13	318-478	HOLDER SLEEVE (A)	1	
14	318-479	HOLDER SLEEVE (B)	1	
15	959-149	STEEL BALL D4.76 (10 PCS.)	2	
16	318-480	HOLDER SLEEVE (C)	1	
17	318-477	GUIDE WASHER	1	
18	318-487	DUST WASHER	1	
19	318-482	SPRING (A)	1	
20	318-486	WASHER (D)	1	
21	318-485	THRUST BEARING	1	
22	318-455	BASE	1	
23	310-222	TAPPING SCREW D4X8	1	
24	318-495	HOLDER SPRING	1	
25	318-497	BASE LEVER	1	
26	318-471	FRONT COVER (B)	1	
27	318-496	PUSHING BUTTON	1	
28	318-494	SPRING (C)	1	
29	677-495	FT-MACHINE SCREW M4X6	2	
30	318-456	FELT COVER	1	
31	318-468	GEAR COVER	1	
32	318-824	PLUNGER (A) SET	1	INCLUD.10
33	318-469	INNER COVER (A)	1	
34	318-489	CHANGE SHAFT	1	
35	872-654	O-RING (1AP-10)	2	
36	974-577	RETAINING RING (E-TYPE) FOR D7 SHAFT	1	
37	945-161	BRUSH CAP	2	
38	999-043	CARBON BRUSH (1 PAIR)	2	
39	958-900	BRUSH HOLDER	2	
40	318-506	HOUSING (GREEN)	1	
41		NAME PLATE	1	
42	307-224	MACHINE SCREW (W/WASHERS) M5X60 (BLACK)	4	
43	307-028	TAPPING SCREW (W/FLANGE) D4X25 (BLACK)	11	
44	303-851	SEAL LOCK SCREW (W/WASHERS) M4X10 (BLACK)	1	
45	318-490	CHANGE KNOB	1	
46	318-470	FRONT COVER (A)	1	
47	318-451	NYLOCK BOLT (W/FLANGE) M6X35	1	
48	318-452	WASHER (G)	1	
49	318-493	BOLT M10	2	
50	318-454	BASE ADAPTER	1	
51	318-461	CUSHION RUBBER	1	

\* : ALTERNATIVE PARTS

2 - 00



STANDARD ACCESSORIES

CR 13VA

ITEM No.	CODE NO.	DESCRIPTION	NO. USED	REMARKS
502	312831	CASE	1	
551		8" BI-M ALLPURP Progressive Recip. Blade 1PC	1	See Item No.677

OPTIONAL ACCESSORIES [Available for the U.S. and Canadian Market only]

ITEM No.	CODE NO.	DESCRIPTION	NO. USED	REMARKS
651	725300	6" HCS WOOD 6TPI Recip. Blade 5PCS	1	
652	725301	9" HCS WOOD 5TPI Recip. Blade 5PCS	1	
653	725302	12" HCS WOOD 6TPI Recip. Blade 5PCS	1	
654	725310	6" BI-M WOODNAIL 6TPI Recip. Blade 5PCS	1	TAPER Blade Back
655	725311	6" BI-M WOODNAIL 6TPI Recip. Blade 5PCS	1	SCROLL Blade Back
656	725312	6" BI-M WOODNAIL 6TPI Recip. Blade 5PCS	1	STRAIGHT Blade Back
657	725313	9" BI-M WOODNAIL 6TPI Recip. Blade 5PCS	1	
658	725314	12" BI-M WOODNAIL 6TPI Recip. Blade 5PCS	1	
659	725320	6" BI-M METAL 10TPI Recip. Blade 5PCS	1	
660	725321	9" BI-M METAL 10TPI Recip. Blade 5PCS	1	
661	725322	6" BI-M METAL 14TPI Recip. Blade 5PCS	1	
662	725323	9" BI-M METAL 14TPI Recip. Blade 5PCS	1	
663	725324	6" BI-M METAL 18TPI Recip. Blade 5PCS	1	
664	725325	6" BI-M METAL 24TPI Recip. Blade 5PCS	1	
665	725326	9" BI-M METAL 18TPI Recip. Blade 5PCS	1	
666	725327	9" BI-M METAL 24TPI Recip. Blade 5PCS	1	
667	725330	6" BI-M ALLPURP 10/14 TPI Recip. Blade 5PCS	1	
668	725331	9" BI-M ALLPURP 10/14TPI Recip. Blade 5PCS	1	
669	725332	12" BI-M ALLPURP 10/14TPI Recip. Blade 5PCS	1	
670	725340	9" CARBIDE GRIT Recip. Blade 3PCS	1	
671	725350	9" BI-M DEMO 6TPI Recip. Blade 3PCS	1	
672	725351	9" BI-M DEMO 9TPI Recip. Blade 3PCS	1	
673	725360	8" HCS WOOD Progressive Recip. Blade 5PCS	1	
674	725360B50	8" HCS WOOD Progressive Recip. Blade	1	BULK 50 PCS
675	725361	6" BI-M METAL Progressive Recip. Blade 5PCS	1	
676	725361B50	6" BI-M METAL Progressive Recip. Blade	1	BULK 50 PCS
677	725362	8" BI-M ALLPURP Progressive Recip. Blade 5PCS	1	
678	725362B50	8" BI-M ALLPURP Progressive Recip. Blade	1	BULK 50 PCS
679	725370	SET OF EACH Recip. Blades	0	for Blades Merchandiser Display

\* : ALTERNATIVE PARTS

Printed in Japan 2-00  
(000215 N)