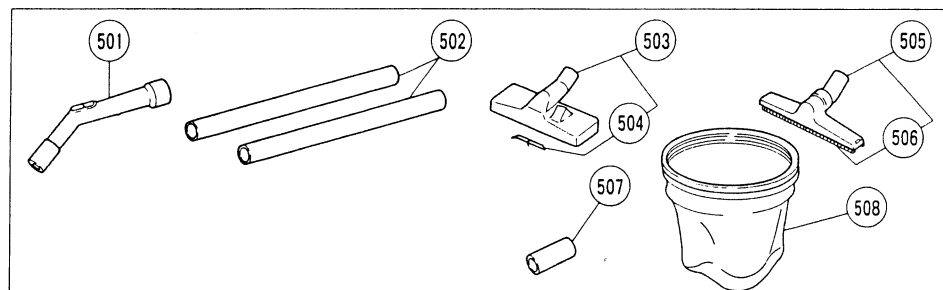
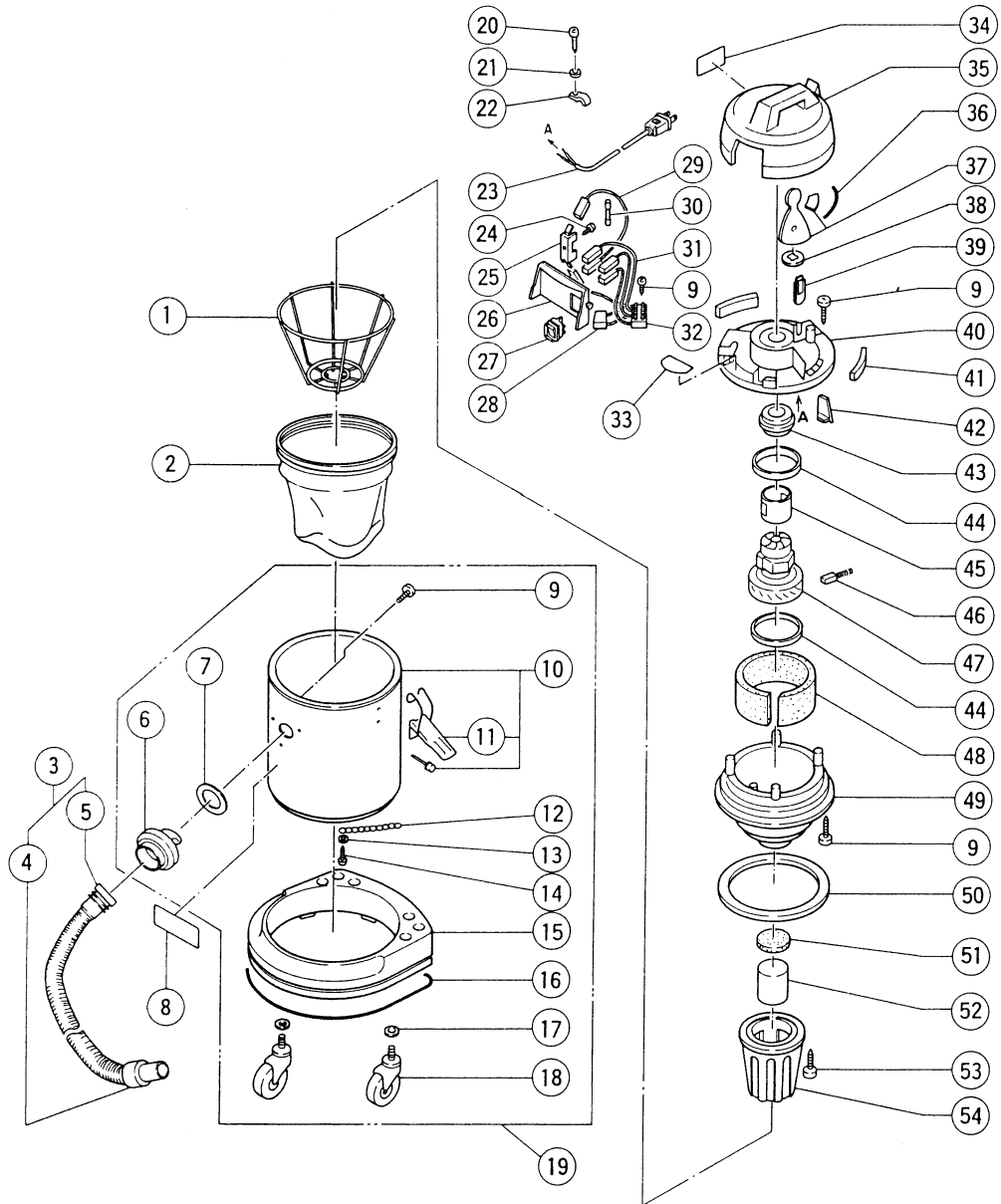


ELECTRIC TOOL PARTS LIST

■ DUST COLLECTOR
Model RP 30SA

1997 • 5 • 30
(E1)



PARTS

| ITEM NO. | CODE NO. | DESCRIPTION | NO. USED | REMARKS |
|----------|----------|--------------------------|----------|-------------------------|
| 1 | 308-455 | FILTER CAGE | 1 | |
| 2 | 314-708 | DRY DUST FILTER | 1 | |
| 3 | 308-463 | HOSE ASS'Y D36 | 1 | INCLUD.4,5 |
| 4 | 309-454 | SLEEVE (B) | 1 | |
| 5 | 309-453 | SLEEVE (A) | 1 | |
| 6 | 308-445 | INTAKE VALVE | 1 | |
| 7 | 308-446 | INTAKE VALVE PACKING | 1 | |
| 8 | | DESING LABEL | 1 | |
| 9 | 308-447 | TAPPING SCREW D3.5X19 | 13 | |
| 10 | 308-443 | TANK ASS'Y | 1 | INCLUD.11 |
| 11 | 308-444 | CLAMP | 1 | |
| 12 | 308-451 | EARTH CHAIN | 1 | |
| 13 | 308-493 | CHAIN WASHER | 1 | |
| 14 | 308-452 | BOLT M6X8 | 1 | |
| 15 | 308-442 | TANK BASE | 1 | |
| 16 | 308-450 | BASE BELT | 1 | |
| 17 | 308-448 | CASTER WASHER | 4 | |
| 18 | 308-449 | CASTER | 4 | |
| 19 | 308-441 | TANK BASE ASS'Y | 1 | INCLUD.6,7,9,10,12 - 18 |
| 20 | 308-432 | TAPPING SCREW D4.8X19 | 1 | |
| 21 | 308-434 | WASHER | 1 | |
| 22 | 314-701 | CORD CLAMP | 1 | |
| 23 | 314-700 | CORD | 1 | |
| 24 | 314-707 | TAPPING SCREW D3.5X13 | 1 | |
| 25 | 314-703 | FUSE HOLDER | 1 | |
| 26 | 314-706 | SUPPORT HOLDER (A) | 1 | |
| 27 | 308-439 | SWITCH | 1 | |
| 28 | 308-438 | NOISE SUPPRESSOR | 1 | |
| 29 | 314-705 | INTERNAL WIRE | 1 | |
| 30 | 314-704 | FUSE (250V - 20A) | 1 | |
| 31 | 308-435 | INTERNAL WIRE | 4 | |
| 32 | 314-702 | PILLAR TERMINAL (4P) | 1 | |
| 33 | | SWITCH LABEL | 1 | |
| 34 | | NAME PLATE | 1 | |
| 35 | 308-411 | HANDLE CASE | 1 | |
| 36 | 308-412 | COVER PACKING | 1 | |
| 37 | 308-413 | SPONGE PACKING | 3 | |
| 38 | 308-414 | PACKING RING | 2 | |
| 39 | 308-494 | PLUG P.P | 1 | |
| 40 | 308-415 | MOTOR COVER | 1 | |
| 41 | 308-416 | PACKING | 3 | |
| 42 | 308-417 | BULKHEAD PACKING | 1 | |
| 43 | 308-418 | MOTOR PACKING (TOP) | 1 | |
| 44 | 308-419 | MOTOR PACKING (FAN) | 2 | |
| 45 | 308-420 | MOTOR SPONGE PACKING (A) | 1 | |
| 46 | 999-048 | CARBON BRUSH (1PAIR) | 2 | |
| 47 | 314-699 | MOTOR ASS'Y | 1 | INCLUD.46 |
| 48 | 308-422 | MOTOR SPONGE PACKING (B) | 1 | |
| 49 | 308-423 | MOTOR SUPPORT | 1 | |
| 50 | 308-425 | TANK PACKING | 1 | |
| 51 | 308-424 | MOTOR FILTER | 1 | |

*: ALTERNATIVE PARTS

PARTS

RP 30SA

| ITEM NO. | CODE NO. | DESCRIPTION | NO. USED | REMARKS |
|----------|----------|--------------------------------|----------|---------|
| 52 | 308-426 | FLOAT | 1 | |
| 53 | 308-429 | FLAT HD. TAPPING SCREW D3.5X16 | 3 | |
| 54 | 308-427 | FLOAT HOLDER | 1 | |

STANDARD ACCESSORIES

| ITEM NO. | CODE NO. | DESCRIPTION | NO. USED | REMARKS |
|----------|----------|------------------------|----------|------------|
| 501 | 308-461 | JOINT HANDLE | 1 | |
| 502 | 309-455 | EXTENSION PIPE D36 | 1 | |
| 503 | 314-710 | PEDAL BRUSH ASS'Y | 1 | INCLUD.504 |
| 504 | 308-458 | SHAFT | 1 | |
| 505 | 308-459 | NOZZLE FOR FLUID ASS'Y | 1 | INCLUD.506 |
| 506 | 308-460 | RUBBER STRIP | 2 | |
| 507 | 963-558 | ADAPTER | 1 | |
| 508 | 314-709 | WET AND DRY FILTER | 1 | |

OPTIONAL ACCESSORIES

| ITEM NO. | CODE NO. | DESCRIPTION | NO. USED | REMARKS |
|----------|----------|-------------------------------------|----------|------------------|
| 601 | 308-466 | BRUSH | 1 | |
| 602 | 308-465 | CREVICE NOZZLE | 1 | |
| 603 | 308-464 | UPHOLSTERY NOZZLE | 1 | |
| 604 | 308-457 | PEDAL BRUSH WITH WHEEL ASS'Y | 1 | INCLUD.605 |
| 605 | 308-458 | SHAFT | 1 | |
| 606 | 308-462 | EXTENSION PIPE D36 | 2 | |
| 607 | 308-303 | FILTER ASS'Y | 1 | INCLUD.602 - 604 |
| 608 | 308-467 | CARTRIDGE FILTER | 1 | |
| 609 | 308-468 | FILTER BRACKET | 1 | |
| 610 | 308-469 | FILTER KNOB | 1 | |
| 611 | 309-176 | FILTER FOAM KILLER | 1 | |
| 612 | 309-481 | PAPER DUSTBAG SET (5 PCS.) | 1 | |
| 613 | 990-912 | DUST COLLECTOR (FOR IMPACT DRILL C) | 1 | |
| 614 | 986-388 | DUST COLLECTOR (FOR HAMMER B) | 1 | |
| 615 | 306-054 | DUST COLLECTOR | 1 | |
| 616 | 300-082 | CLEANER ADAPTER | 1 | |
| 617 | 963-557 | DUST COVER | 1 | |
| 618 | 314-711 | DUST COLLECTION ADAPTER (FOR D60) | 1 | |
| 619 | 308-776 | DUST COLLECTOR SET | 1 | INCLUD.620 |
| 620 | 308-774 | ADAPTER (A) | 1 | |
| 621 | 302-690 | DUST COLLECTOR SET | 1 | |
| 622 | 997-466 | DUST COLLECTION ADAPTER SET | 1 | |
| 623 | 303-377 | DUST COLLECTOR SET | 1 | |
| 624 | 309-451 | HOSE ASS'Y D36X5M | 1 | INCLUD.626,627 |
| 625 | 309-452 | HOSE ASS'Y D36X9M | 1 | INCLUD.626,627 |
| 626 | 309-453 | SLEEVE (A) | 1 | |
| 627 | 309-454 | SLEEVE (B) | 1 | |
| 628 | 309-679 | HOSE ASS'Y D25X5M | 1 | INCLUD.629,630 |
| 629 | 309-680 | SLEEVE (B) | 1 | |
| 630 | 309-681 | SLEEVE (A) | 1 | |
| 631 | 308-470 | HOSE BAND | 1 | |

* : ALTERNATIVE PARTS

