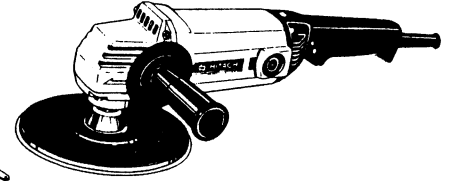
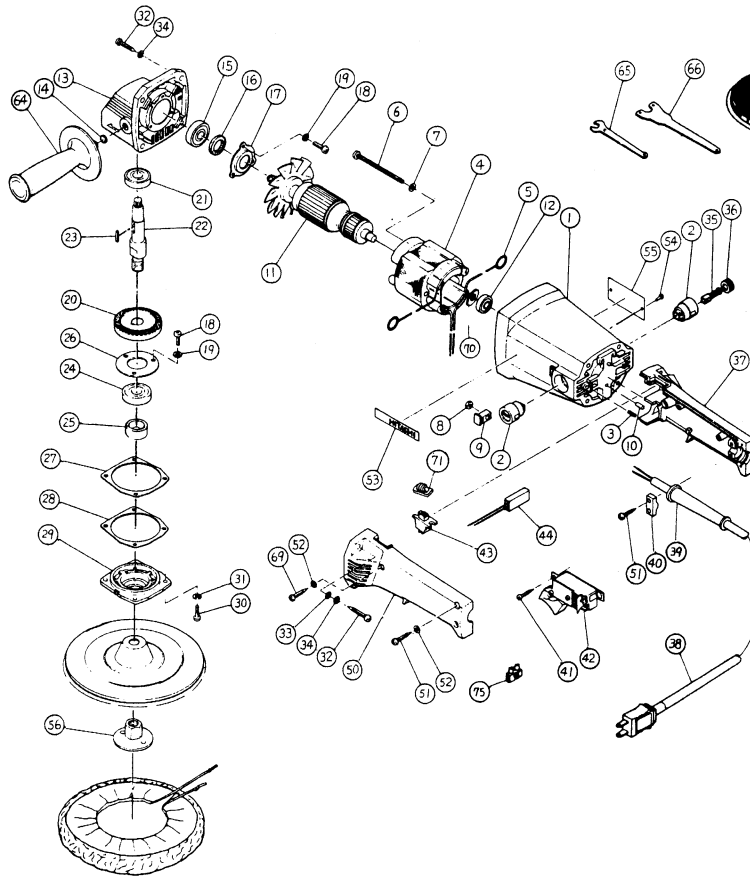




7" DISC SANDER POLISHER

Model SAT-180



ITEM NO.	PART NO.	NO. USED	DESCRIPTION	SUPPLY Q'TY	ITEM NO.	PART NO.	NO. USED	DESCRIPTION	SUPPLY Q'TY
1	953230	1	Housing Assembly (includes Item 2,3)		30	949239	4	Machine Screw M5×16	10
2	958900	2	Brush Holder		31	949454	4	Spring Washer M5	10
3	949365	1	Set Screw M4×5	10	32	937807	8	Tapping Screw D5×25	
4	953231C	1	Stator Assembly (includes Item 5)		33	949424	4	Washer M5	10
5	930703	2	Brush Terminal		34	949454	8	Spring Washer M5	10
6	949233	2	Machine Screw M5×55	10	35	999043	2	Carbon Brush	2
7	949454	2	Spring Washer M5	10	36	945161	2	Brush Cap	
8	949555	2	Nut M5	10	37	953258	1	Handle (A)	
9	953232	2	Nut Cover		38	500240Z	1	Cord	
10	931701	1	Bearing Lock		39	958049Z	1	Cord Armor	
11	953297C	1	Armature Assembly (includes Item 12,70,15)		40	937631	1	Cord Clip	
12	608VVM	1	Ball Bearing 608VVMC2EPS2L		41	954017	2	Tapping Screw D4×12	
13	953234	1	Gear Cover includes Item 14		42	953249P	1	Double Pole Switch (old 986201)	
14	937030	1	Felt Washer		43	953266Z	1	Slide Switch	
15	6002VV	1	Ball Bearing 6002VVCMPMS2S		44	953267Z	1	Diode	
16	953235	1	Felt Packing (A)		50	953263P	1	Handle (B) for w / o Lock Switch	
17	953236	1	Bearing Cover		51	984750	2	Tapping Screw D4×16 (old #954004)	
18	949217	6	Machine Screw M4×12	10	52	949423	3	Washer M4	10
19	949453	6	Spring Washer M4	10	53	957561	1	HITACHI Label	
20	953237	1	Gear		54	949509	2	Rivet D2.5×3.2	10
21	6200VV	1	Ball Bearing 6200VVCMPMS2S		55	—	1	Name Plate	
22	953248P	1	Spindle 5 / 8"-11UNC		56	953254P	1	Washer Nut 5 / 8"-11UNC	
23	940533	1	Feather Key 3×3×10		64	956633	1	Side Handle	
24	6202VV	1	Ball Bearing 6200VVCMPMS2S		65	937914	1	Wrench (A)	
25	938403	1	Felt Packing		66	937913Z	1	Wrench (B)	
26	937077	1	Bearing Cover (A)		69	956384	3	Tapping Screw D4×20	
27	953239	1	Seal Packing (A)		70	956387	1	Dust Seal (A)	
28	953240	2	Thrust Washer (B)	2	71	971792	1	Slide Switch Cover	
29	953241	1	Packing Gland		75	938307Z	1	Pillar Terminal	