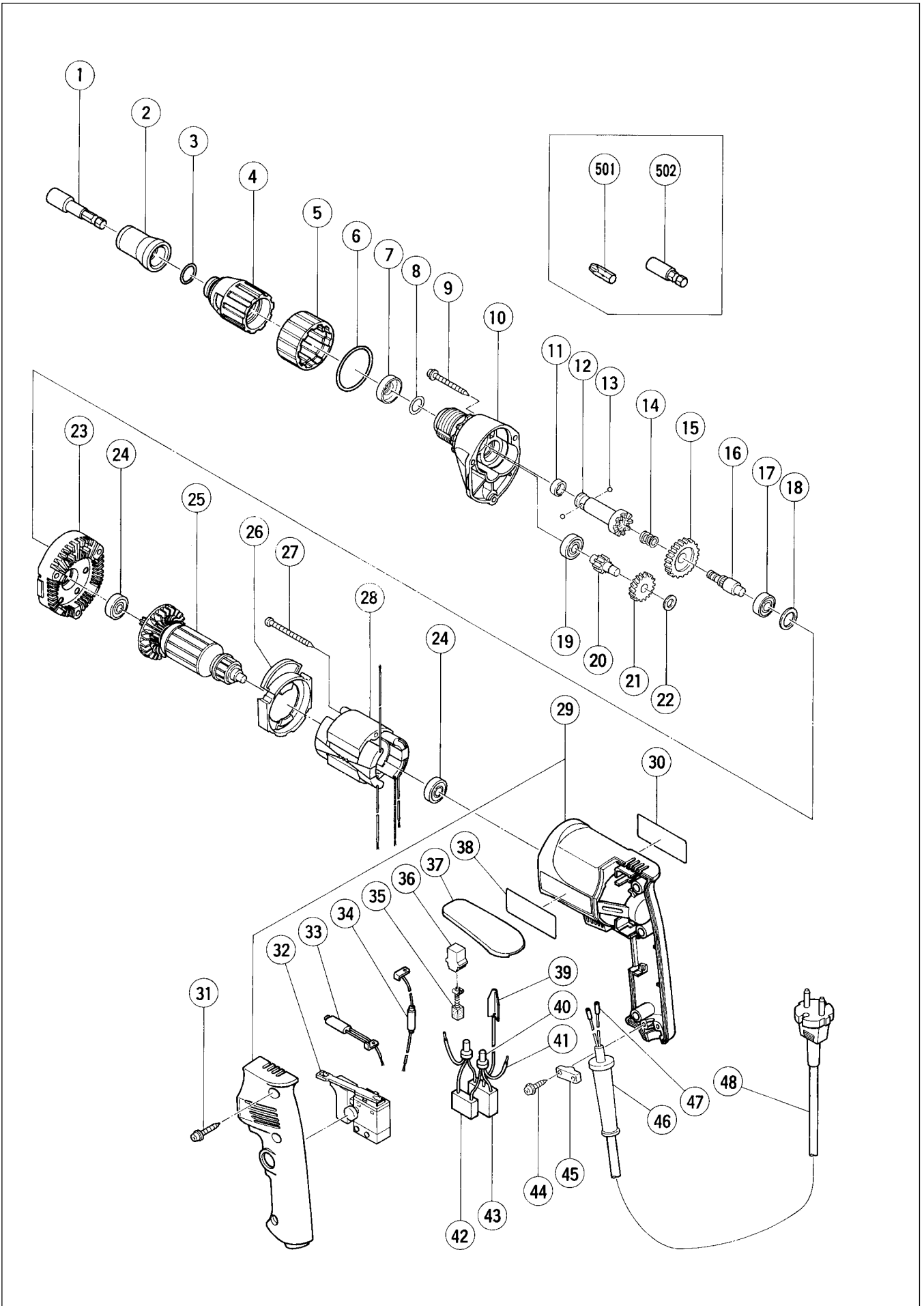


# Assembly Diagram for W 6VB2



## PARTS

W 6VB2

| ITEM NO. | CODE NO. | DESCRIPTION | NO. USED                                 | REMARKS |                                     |  |
|----------|----------|-------------|--|---------|-------------------------------------|--|
| *        | 1        | 985-322     | MAGNETIC HEX. SOCKET 5/16"X65L           | 1       | FOR AUS,GBR,NOR,USA                 |  |
| *        | 1        | 985-321     | MAGNETIC HEX. SOCKET 10MMX65L            | 1       | FOR HOL,FIN,CHN                     |  |
| *        | 2        | 317-670     | SUB STOPPER (B) FOR H3/8,H10 HEX. SOCKET | 1       | FOR HOL,FIN,CHN                     |  |
| *        | 2        | 317-671     | SUB STOPPER (B) FOR H5/16 HEX. SOCKET    | 1       | FOR AUS,GBR,NOR,USA                 |  |
| *        | 2        | 317-673     | SUB STOPPER (C) FOR BIT HOLDER (75L)     | 1       | FOR FRG                             |  |
| *        | 2        | 317-672     | SUB STOPPER (A) FOR BIT HOLDER (41L)     | 1       | FOR FRG,FRA,HOL,AUT                 |  |
| *        | 2        | 317-899     | SUB STOPPER (D) FOR HEX. SOCKET          | 1       | FOR FRA                             |  |
|          | 3        | 876-031     | O-RING (S-16)                            | 1       |                                     |  |
|          | 4        | 317-666     | LOCATOR (A)                              | 1       |                                     |  |
|          | 5        | 317-665     | LOCK SLEEVE (A)                          | 1       |                                     |  |
|          | 6        | 873-731     | O-RING (S-28)                            | 1       |                                     |  |
|          | 7        | 971-468     | FRINGER (A)                              | 1       |                                     |  |
|          | 8        | 317-662     | O-RING (F)                               | 1       |                                     |  |
|          | 9        | 306-664     | TAPPING SCREW (W/FLANGE) D4X40           | 3       |                                     |  |
|          | 10       | 317-661     | GEAR COVER ASS'Y                         | 1       | INCLUD.8,19                         |  |
|          | 11       | 872-573     | SET RING                                 | 1       |                                     |  |
|          | 12       | 317-664     | SOCKET (B) ASS'Y                         | 1       | INCLUD.11,13                        |  |
|          | 13       | 959-148     | STEEL BALL D3.175 (10 PCS.)              | 2       |                                     |  |
|          | 14       | 306-024     | SPRING                                   | 1       |                                     |  |
|          | 15       | 317-771     | GEAR ASS'Y                               | 1       | INCLUD.16                           |  |
|          | 16       | 307-340     | GEAR SHAFT                               | 1       |                                     |  |
|          | 17       | 608-VVM     | BALL BEARING 608VVMC2EPS2L               | 1       |                                     |  |
|          | 18       | 987-641     | WASHER (A)                               | 1       |                                     |  |
|          | 19       | 608-VVM     | BALL BEARING 608VVMC2EPS2L               | 1       |                                     |  |
|          | 20       | 317-770     | SECOND PINION ASS'Y                      | 1       | INCLUD.21                           |  |
|          | 21       | 317-772     | FIRST GEAR                               | 1       |                                     |  |
|          | 22       | 317-663     | WASHER                                   | 1       |                                     |  |
|          | 23       | 317-660     | INNER COVER ASS'Y                        | 1       | INCLUD.17,18                        |  |
|          | 24       | 608-VVM     | BALL BEARING 608VVMC2EPS2L               | 2       |                                     |  |
| *        | 25       | 360-492C    | ARMATURE 110V                            | 1       |                                     |  |
| *        | 25       | 360-492U    | ARMATURE ASS'Y 115V                      | 1       | INCLUD.24                           |  |
| *        | 25       | 360-492E    | ARMATURE 220V-230V                       | 1       |                                     |  |
| *        | 25       | 360-492F    | ARMATURE 240V                            | 1       |                                     |  |
|          | 26       | 305-398     | FAN GUIDE (B)                            | 1       |                                     |  |
|          | 27       | 950-515     | TAPPING SCREW D4X50                      | 2       |                                     |  |
| *        | 28       | 340-436C    | STATOR 110V-115V                         | 1       |                                     |  |
| *        | 28       | 340-436E    | STATOR 220V-230V                         | 1       |                                     |  |
| *        | 28       | 340-224F    | STATOR 240V                              | 1       |                                     |  |
|          | 29       | 317-659     | HOUSING.HANDLE COVER SET                 | 1       |                                     |  |
|          | 30       |             | NAME PLATE                               | 1       |                                     |  |
|          | 31       | 302-086     | TAPPING SCREW (W/FLANGE) D4X20 (BLACK)   | 3       |                                     |  |
| *        | 32       | 314-916     | SPEED CONTROL SWITCH (2P) 100V-115V      | 1       | FOR GBR (110V),USA                  |  |
| *        | 32       | 314-921     | SPEED CONTROL SWITCH (2P) 220V-240V      | 1       |                                     |  |
| *        | 33       | 317-668     | INTERNAL WIRE (A)                        | 1       | FOR AUS,GBR,FRG,FRA,HOL,FIN,AUT,NOR |  |
| *        | 33       | 314-917     | INTERNAL WIRE (B) (BLUE)                 | 1       | FOR USA                             |  |
| *        | 34       | 317-669     | INTERNAL WIRE (B)                        | 1       | FOR AUS,GBR,FRG,FRA,HOL,FIN,AUT,NOR |  |
| *        | 34       | 314-918     | INTERNAL WIRE (B) (BROWN)                | 1       | FOR USA                             |  |
|          | 35       | 999-041     | CARBON BRUSH (1 PAIR)                    | 2       |                                     |  |
|          | 36       | 955-203     | BRUSH HOLDER                             | 2       |                                     |  |
|          | 37       | 317-676     | HOOK (A)                                 | 1       |                                     |  |
|          | 38       |             | HITACHI LABEL                            | 1       |                                     |  |



