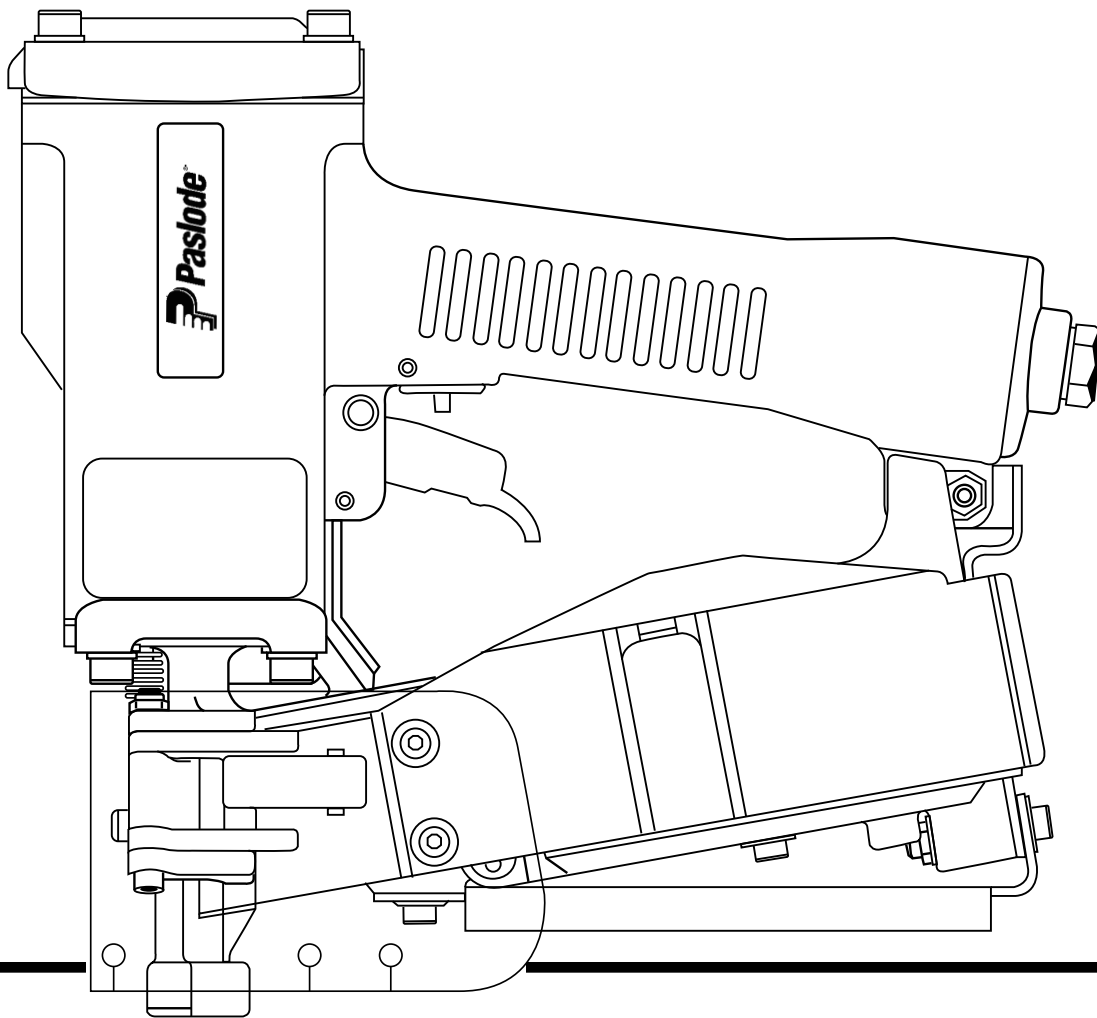




MODEL 3200/50-CP  
COIL NAILER



TOOL SCHEMATIC AND PARTS

**IMPORTANT!**

**DO NOT DESTROY**

Always refer to safety and maintenance manual #403606 for detailed information on this tool. It is the customer's responsibility to have all operators and service personnel read and understand this information.

# PARTS LEGEND

3200/50-CP, 500303

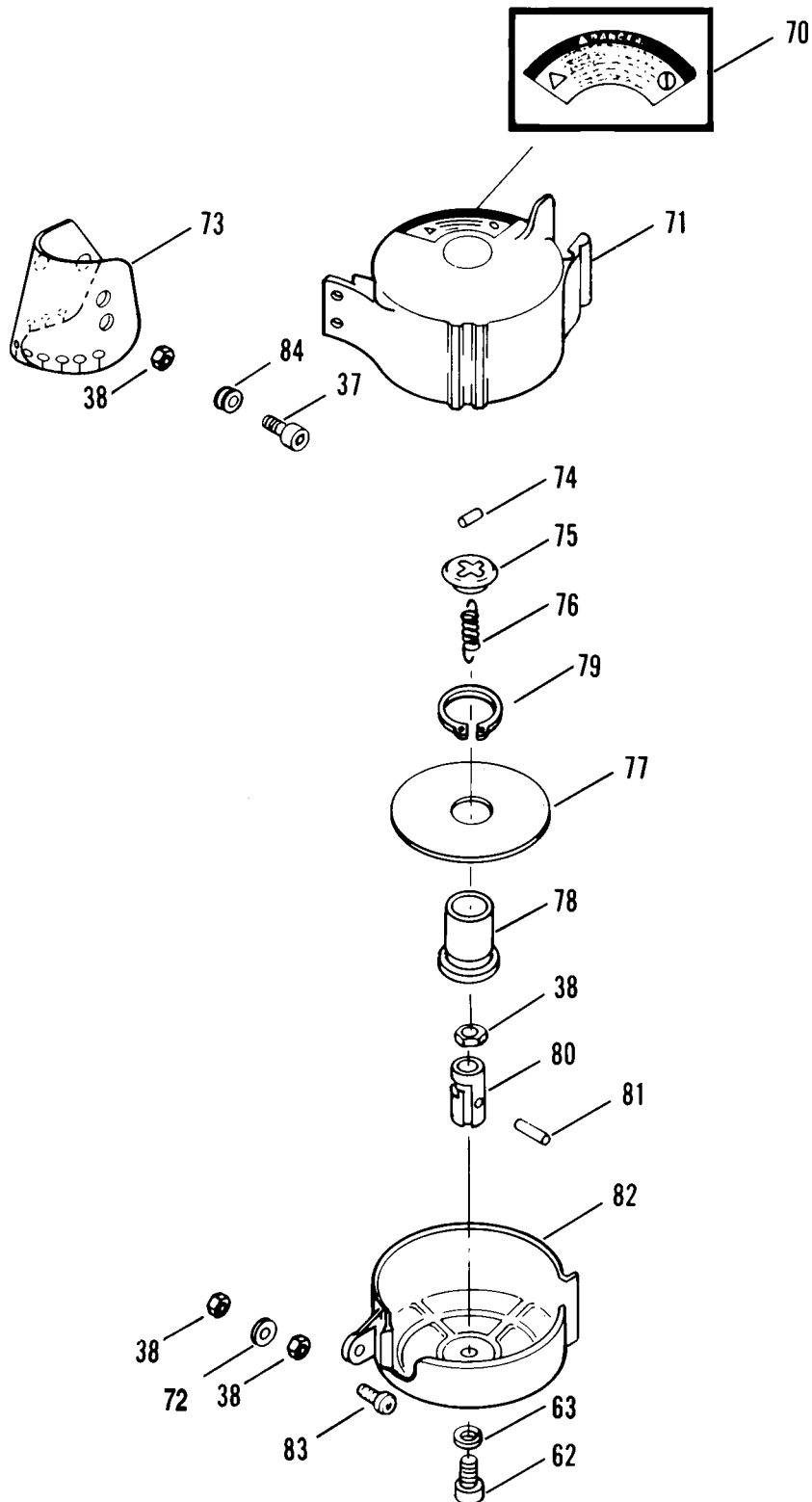
1	013567	4	Socket Head Capscrew, 1-1/4 x 2-1/2"	▲49	091545	4	Socket Head Capscrew, 1/4 - 20 x 7/8"
2	002187	4	Lock Washer, 1/4"	50	404012	1	Holdback Claw
3	404242	1	Air Diffuser	51	403551	1	Door
4	091447	4	Washer	52	403558	1	Locator
▲5	006310	1	Socket Head Capscrew, #6-32 x 1/2"	53	404663	1	Spring, Work Contacting Element
→ 7	500324	1	Cap With Setscrew	*54	402031	1	"O" Ring
8	402717	1	Conical Spring	55	405234	1	Piston, Feed Claw
9	404230	1	Retaining Ring	*56	092709	1	"O" Ring
*10	091537	1	"O" Ring, Main Valve Assembly	57	096815	1	Spring
11	404122	1	Upper Valve Piston	58	403572	1	Bumper, Feed Claw Piston
12	404055	1	Post, Main Valve	59	405233	1	Piston Guide
*13	404256	1	"O" Ring, Main Valve Post	60	403573	1	Retaining Ring
*14	402723	1	"O" Ring, Piston	61	402486	1	Retaining Washer
15	403582	1	Lock Nut, Gripco, 5/16-24	▲ 62	009037	2	Socket Head Capscrew, #10-32 x 1/2"
16	403563	1	Piston	63	006057	2	Flat Washer, #10
*17	403802	1	Driver Blade - Carbide tip	*64	090927	1	"O" Ring, Main Valve
	500701	1	Driver Blade (Europe only)	65	403807	1	Work Contacting Element
18	402725	1	Seal, Sleeve	66	402488	1	Pivot Pin, Feed Claw
19	405245	1	Sleeve	*67	402041	1	Torsion Spring, Feed Claw
*20	402728	1	"O" Ring, Sleeve	68	403557	1	Feed Claw
*21	402729	1	"O" Ring, Sleeve	69	405243	1	Flange Sleeve
22	403854	1	Retaining Bumper	**70	400658	1	Warning Label
*23	403853	1	Bumper	71	404015	1	Cover, Magazine
*24	500325	2	Gasket, Cap	72	402629	2	Washer
25	402701	1	Housing	*73	403806	1	Debris Shield
26	404939	2	Logo, Housing	74	403579	1	Roll Pin, 1/16" Dia. x 1/2" Lg.
27	500695	1	Nameplate	75	403568	1	Cap, Post
28	402708	1	Gasket, Nose	76	402071	1	Extension Spring, Post
29	405147	1	Lever, Trigger	77	403543	1	Nail Plate Assembly
30	405144	1	Trigger	78	404731	1	Center Post, Outer
31	500488	1	Grip Handle	79	403580	1	Retaining Ring
32	005849	1	Roll Pin	80	403556	1	Center Post, Inner
33	402079	1	Pin, Trigger	81	005849	1	Roll Pin, 1/8" x 11/16" Lg.
34	404325	1	Stop Nut	82	404016	1	Magazine
35	026133	2	Roll Pin, 1/8" Dia. x 1" Lg.	83	404303	1	Socket Head Capscrew, #10-32 x 1 1/4"
36	404017	1	Magazine Bracket	84	404002	3	Grommet
37	004502	4	Socket Head Capscrew, #10-32 x 5/8"	85	006621	1	Socket Head Capscrew, #10 32 x 7/8"
38	092037	8	Flexloc Nut, #10-32	*86	092775	1	"O" Ring, Main Valve
39	097748	2	Spring, Valve Pin	87	500327	1	Cap Storage
40	097746	1	Valve Pin	88	404361	1	Roll Pin, 1/8" x 1/2" Lg.
*41	092174	1	"O" Ring, Valve Body	89	404243	4	Spacer, Diffuser
42	401958	1	Valve Body	*90	092773	1	"O" Ring, Main Valve
43	091591	1	"O" Ring, End Plug	91	404056	1	Lower Valve Piston
▲44	401940	1	End Plug	93	091732	1	Flexloc Nut 10-32
45	091622	1	Reducing End Plug	94	091966	1	O-Ring
46	403808	1	Nose	95	403295	1	Spring, Compression
47	404106	1	Socket Head Capscrew, #10-32 x 2"	96	091541	1	"O" Ring, Cap
48	404054	1	Seal, Main Valve	97	500328	1	"O" Ring, Cap

▲ Apply Loctite 242 (Blue) Part No. 093500

\* Denotes normal wear items

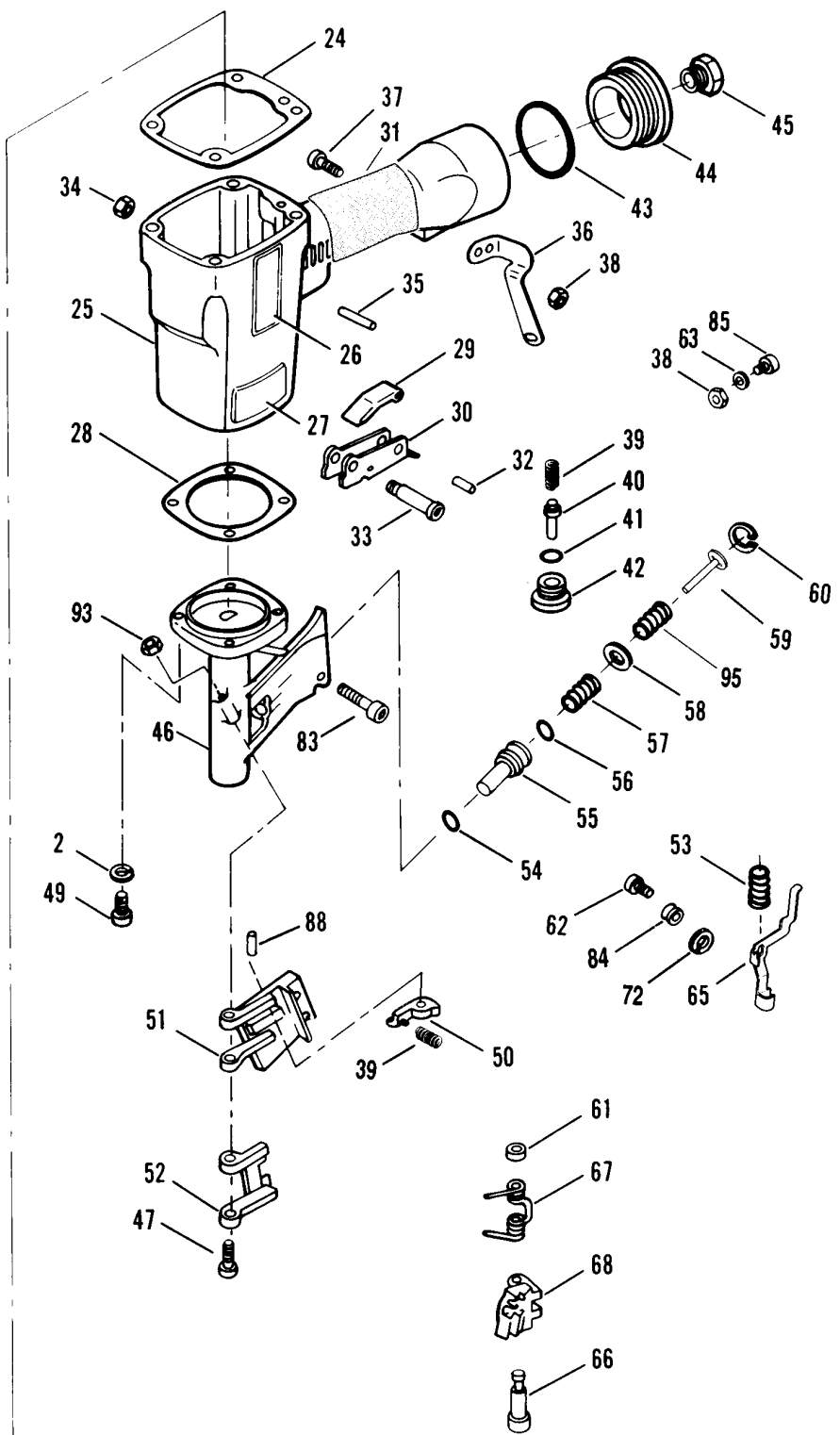
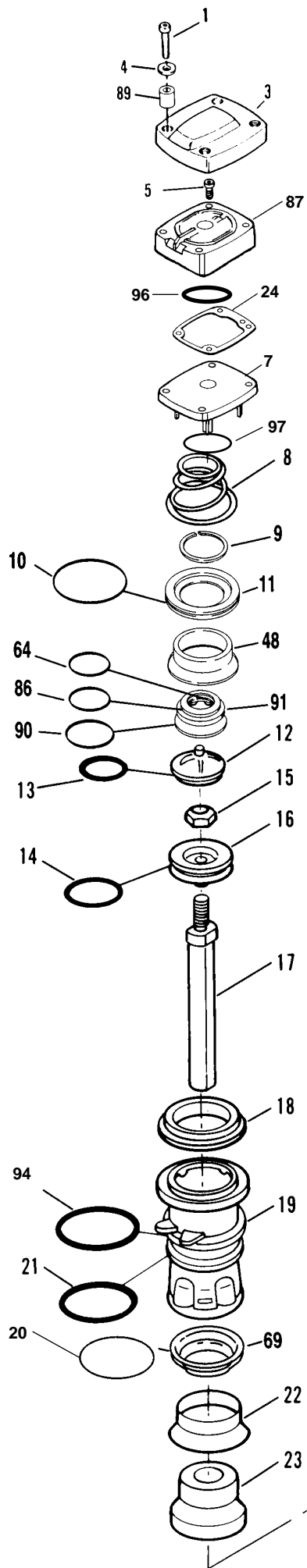
\*\* NOTE: Make sure Warning Label (400658) is properly affixed. Replace if necessary. Label available at no charge through Service Department.

→ Denotes new change.



## WARNING

All parts must be periodically inspected and replaced if worn or broken. Failure to do this can affect the tool's operation and present a safety hazard.



## PARTS OFFERED AS ASSEMBLIES

### 402408 Trigger Assembly

Includes

29	405147	1	Lever, Trigger
30	405144	1	Trigger
32	005849	1	Roll Pin

### 404188 Main Valve Assembly

Includes

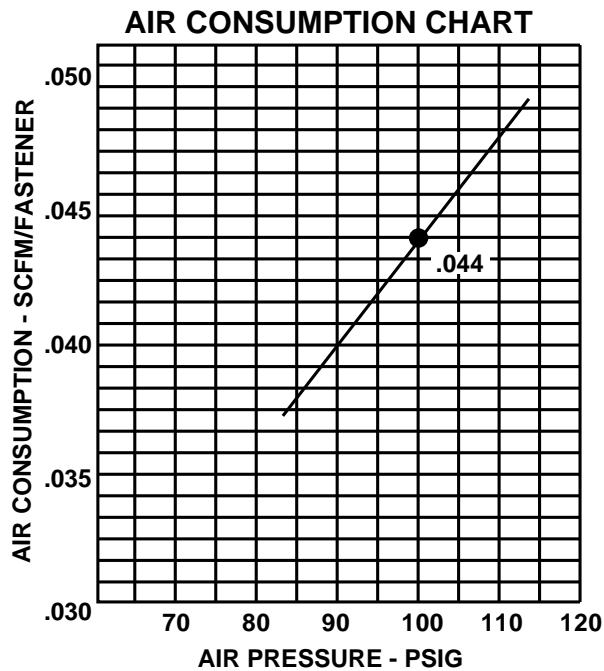
9	404230	1	Retaining Ring
*10	091537	1	"O" Ring, Main Valve Assembly
11	404122	1	Upper Valve Piston
48	404054	1	Seal, Main Valve
*64	090927	1	"O" Ring, Main Valve Assembly
*86	092775	1	"O" Ring, Main Valve Assembly
*90	092773	1	"O" Ring, Main Valve Assembly
91	404056	1	Lower Valve Piston

### 403804 Piston Assembly

### 500702 Piston Assembly (Europe Only)

Includes

*14	402723	1	"O" Ring, Piston
15	403582	1	Lock Nut, Gripco, 5/16-24
16	403563	1	Piston
*17	403802	1	Driver Blade
	500701	1	Driver Blade (Europe only)



## SAFETY INSTRUCTIONS

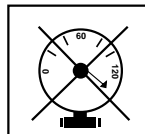
### WEAR EYE AND HEARING PROTECTION



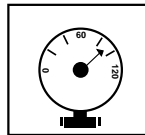
Always wear hearing protection and eye protection devices, including side shields when operating or working in the vicinity of a tool.



### DO NOT EXCEED MAXIMUM RECOMMENDED AIR PRESSURE



Operate the tool using only the recommended air pressure. Do not exceed the maximum air pressure marked on the tool. Be sure the air pressure gauge is operating properly and check it at least twice a day.

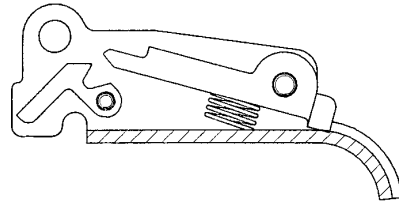


Never use any bottled air or gases such as oxygen to operate the tool since they could cause the tool to explode.

# ACCESSORIES

## Sequential Operating Kit

This special attachment is designed for sequential operation (stops "contact" firing). The operator must depress and hold the work contacting element against the work surface before pulling the trigger. This sequence must be repeated each time the tool drives a fastener.

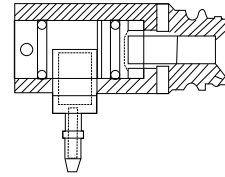


Part No. 406006

---

## Remote Fire Valve

This valve via a positive air signal allows a machine mounted tool to be operated from an automatic air valve or foot pedal system.



Part No. 1X0713

---

## Lubricants and Loctite

Chemplex 710 Lubricant 1 lb.

Part No. 403734

Loctite 242 (Blue) 1 oz.

Part No. 093500

Lubricating Oil 8 oz.

Part No. 219026

Lubricating Oil 8 oz. with Antifreeze

Part No. 219090

---

## Degreaser Safety Cleaner

Ideal cleaner for all Paslode tools.

Part No. 219086

---

## Universal Belt Hook

Attaches to cap of tool enabling you to carry tool on belt holder (offered below).

Part No. 219017

---

## Belt Hook Holder

Attaches to work belt and carries tool using the above belt hook.

Part No. 219028

---

## Safety Glasses

Clear

Part No. 402510

Tinted

Part No. 402512

---

## Large Carrying Case

Part No. 219034

---

## Power Pack Cap Kit

(Includes Key #'s: 1, 7, 24, 87, 96 and 97.)

Part No. 500300

---

## 3000 Series Tool Repair Kit

Repairs all air leaks except for the trigger valve.

Part No. 219222

