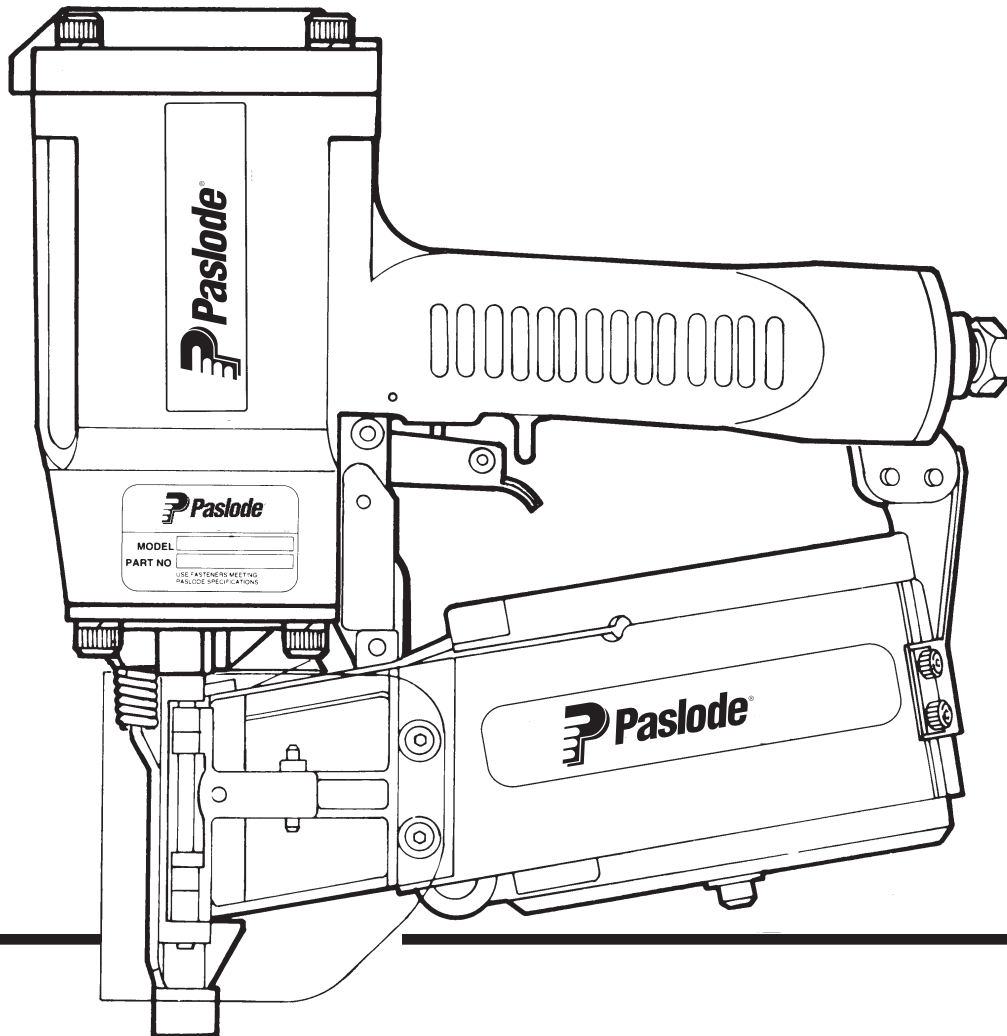




MODEL 4250/65CP-STL  
COIL NAILER



TOOL SCHEMATIC AND PARTS

**IMPORTANT!**

**DO NOT DESTROY**

Always refer to safety and maintenance manual #403606 for detailed information on this tool. It is the customer's responsibility to have all operators and service personnel read and understand this information.

# PARTS LEGEND

4250/65CP-STL, 403237

1	404229	4	Socket Head Capscrew, 1/4-20 x 2-1/4	54	406021	1	Nose
2	002187	6	Lock Washer, 1/4"	55	263239	1	Retaining Ring
*3	402978	1	Cap, Diffuser	56	402018	1	End Cap
4	091363	2	Flexloc Thin Nut, #8-32	57	402084	1	Bumper, Feed Claw Piston
5	091860	2	Flexloc Nut	58	402024	1	Spring
*6	500011	1	Cap	59	402038	1	Feed Claw Piston
*7	402955	1	Gasket, Cap	*60	091541	1	"O" Ring, Feed Claw Piston
8	402959	1	Spring, Main Valve		091541	1	"O" Ring, Cylinder End Seal
9	500322	1	Retaining Ring	61	402039	1	Cylinder End Seal
*10	402962	1	"O" Ring, Upper Valve Piston	*62	402031	1	"O" Ring, Cylinder End Seal
11	402941	1	Upper Valve Piston	63	402055	1	Feeder Body
*12	092729	1	"O" Ring, Lower Valve Piston	64	402027	1	Air Feed Tube
*13	004163	1	"O" Ring, Lower Valve Piston	*65	094295	1	"O" Ring, Housing
*14	402974	1	"O" Ring, Lower Valve Piston	66	005562	1	Flat Socket Head Capscrew, 1/4-20 x 1"
15	500321	1	Lower Valve Piston	*67	402041	1	Torsion Spring, Feed Claw
16	405211	1	Seal, Main Valve	68	402486	1	Retaining Ring
*17	402963	1	"O" Ring, Main Valve Post	69	402488	1	Pivot Pin, Feed Claw
18	402944	1	Post, Main Valve	70	406008	1	Feed Claw
▲ 19	070502	1	Button Hd Socket Cap Screw, #8-32 x 1/2"	71	402017	1	Hinge Pin, Door
20	400196	1	Gripco Lock Nut, 3/8-24	72	402964	1	Spring, Work Contacting Element
21	095412	2	Washer, Driver Blade	73	009037	2	Socket Head Capscrew, #10-32 x 1/2"
*22	091539	1	"O" Ring, Piston	74	008388	4	Flat Washer, #10
23	402951	1	Piston	75	402666	1	Bushing
▲ *24	402957	1	Driver Blade	76	500476	1	Upper Work Contacting Element
25	402954	1	Seal, Sleeve	77	091733	2	Flexlock Nut, 1/4-20
26	406012	1	Sleeve	78	402486	1	Retaining Washer
*27	402961	1	"O" Ring, Sleeve	79	402487	1	Pivot Pin, Holdback Claw
*28	091022	1	"O" Ring, Sleeve	80	402037	1	Holdback Claw
*29	402973	1	Sleeve/Bumper	81	402026	1	Spring, Holdback Claw
30	403762	1	Bumper	82	402053	1	Door
31	097748	1	Spring, Valve Pin	83	402461	1	Locator
32	097746	1	Valve Pin	84	096893	1	Nameplate
33	401958	1	Valve Body	85	402659	2	Grommet
*34	092174	1	"O" Ring, Valve Body	86	015298	2	Socket Head Capscrew, #8-32 x 5/8"
35	026133	1	Roll Pin, 1/8" Dia. x 1" Lg.	87	402939	1	Debris Shield
36	403771	1	Guard, Work Contacting Element	88	402066	1	Cover, Magazine
37	403796	1	Roll Pin, 1/8" Dia. x 1-1/4" Lg.	▲ 89	091613	2	Socket Head Capscrew, #8-32 x 3/8"
38	402926	1	Housing	90	402081	1	Reinforcement Plate
39	402079	1	Pin, Trigger	91	402083	1	Latch Plate
40	405147	1	Lever, Trigger	92	402655	1	Logo, Magazine
41	405144	1	Trigger	93	402082	2	Nut Plate
42	402668	1	Retaining Ring	94	500472	1	W.C.E. Tip Assembly
44	005849	1	Roll Pin	95	500471	1	Tip, Adjustable
45	004502	1	Socket Head Capscrew, #10-32 x 5/8"	96	406023	1	Tray Post
46	004238	4	Lock Washer, #10	97	406024	1	Tray Spacer
47	404938	2	Logo, Housing	98	406007	1	Logo
*48	091208	1	"O" Ring, Housing	99	402075	1	Retaining Ring
49	402933	1	Flange, Nose	100	402074	1	Nail Plate Assembly
50	095417	4	Lock Washer, 5/16"	101	406047	1	Outer Center Post
51	009016	4	Socket Head Capscrew, 5/16 - 18 x 1"	102	406010	1	Flange, Sleeve
52	006787	2	Roll Pin, 3/16 Dia. x 1" Lg.	103	402946	1	Bracket, Magazine
52A	401697	2	Roll Pin	▲ 104	004224	2	Socket Head Capscrew, #10-32 x 3/8"
53	092735	2	Socket Head Capscrew, 1/4-20 x 1-1/4"	105	402089	2	Teenut

\* Denotes normal wear items.

\*\* Make sure warning label (500457) is properly affixed. Replace if necessary. Label available at no charge through the service department.

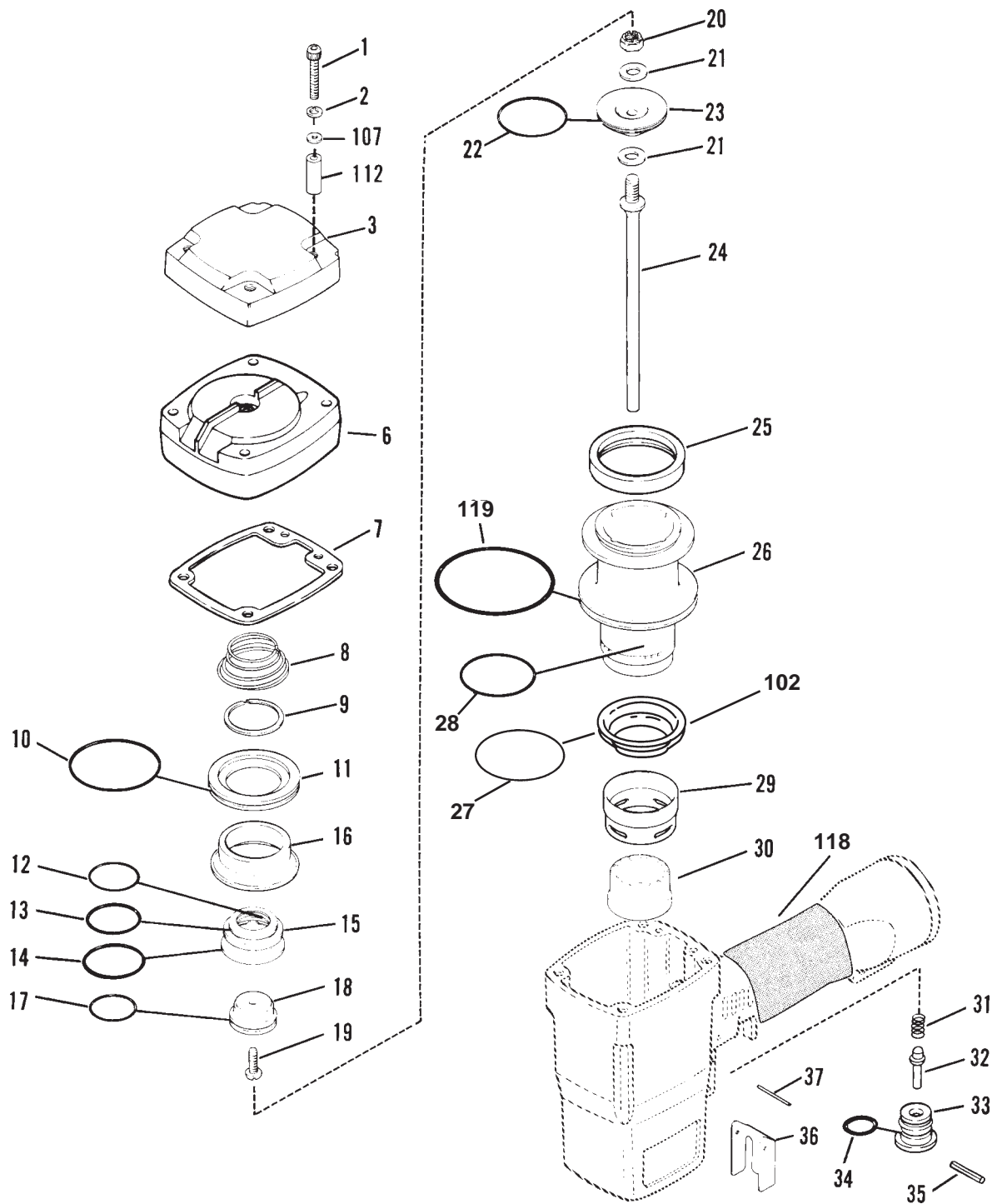
▲ Apply Loctite 242 (Blue) Part No. 093500

➔ Denotes new change



## WARNING

**All parts must be periodically inspected and replaced if worn or broken. Failure to do this can affect the tool's operation and present a safety hazard.**

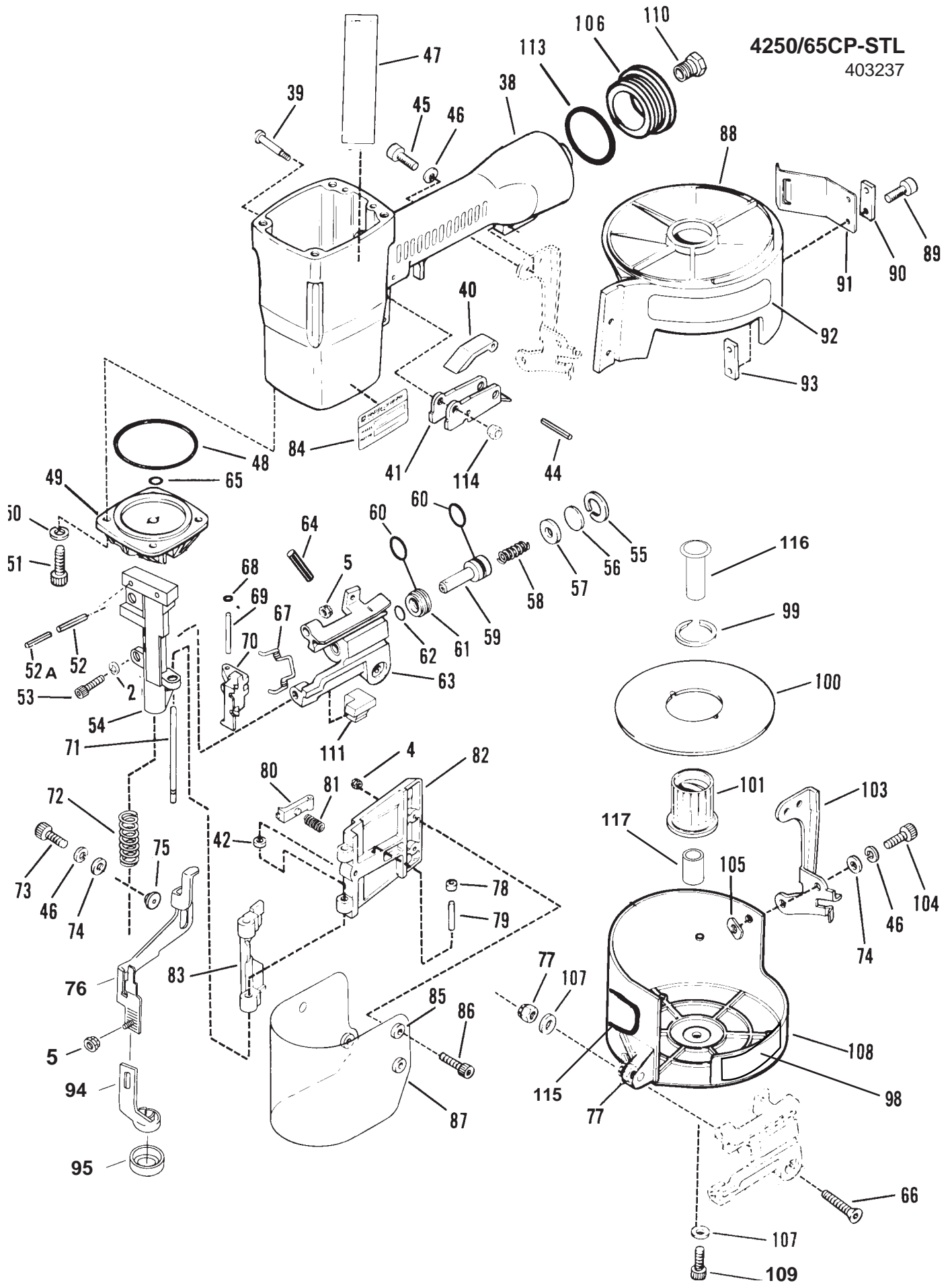


## PARTS LEGEND - Continued

106	401940	1	End Plug	113	091591	1	"O" Ring
107	091447	6	Flat Washer, 1/4"	114	404325	1	Stop Nut
108	402063	1	Magazine, 2-1/2"	**115	500457	1	Warning Label
109	009041	1	Socket Head Capscrew, 1/4-20 x 3/4"	116	406023	1	Post
110	091622	1	Reducing Pipe Bushing, 1/4" x 3/8"	117	406024	1	Spacer
111	404313	1	Insert, Feeder Body	118	500488	1	Grip, Handle
112	402979	4	Spacer, Diffuser	119	401952	1	"O" Ring, Sleeve

4250/65CP-STL

403237



## PARTS OFFERED AS ASSEMBLIES

### 403793 Piston Assembly

Includes

- 20 400196 1 Gripco Lock Nut, 3/8-24
- 21 095412 2 Washer, Driver Blade
- 22 091539 1 "O" Ring, Piston
- 23 402951 1 Piston
- 24 402957 1 Driver Blade

### 402940 Cap Assembly

Includes

- 6 500011 1 Cap
- 8 402959 1 Spring, Main Valve
- 9 500322 1 Retaining Ring
- 10 402962 1 "O" Ring, Upper Valve Piston
- 11 402941 1 Upper Valve Piston
- 12 092729 1 "O" Ring, Lower Valve Piston
- 13 004163 1 "O" Ring, Lower Valve Piston
- 14 402974 1 "O" Ring, Lower Valve Piston
- 15 500321 1 Lower Valve Piston
- 16 405211 1 Seal, Main Valve
- 17 402963 1 "O" Ring, Main Valve Post
- 18 402944 1 Post, Main Valve
- 19 070502 1 Button Hd Socket Cap Screw, #8-32 x 1/2

### 405212 Main Valve Assembly

Includes

- 9 500322 1 Retaining Ring
- 10 402962 1 "O" Ring, Main Valve Assembly
- 11 402941 1 Upper Valve Piston
- 12 092729 1 "O" Ring, Lower Valve Piston
- 13 004163 1 "O" Ring, Lower Valve Piston
- 14 402974 1 "O" Ring, Lower Valve Piston
- 15 500321 1 Lower Valve Piston
- 16 405211 1 Seal, Main Valve

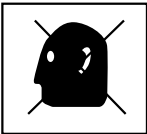
### 402408 Trigger Assembly

Includes

- 40 405147 1 Lever, Trigger
- 41 405144 1 Trigger
- 44 005849 1 Roll Pin

## SAFETY INSTRUCTIONS

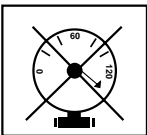
WEAR EYE AND HEARING PROTECTION



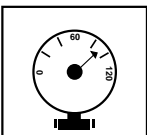
Always wear hearing protection and eye protection devices, including side shields when operating or working in the vicinity of a tool.



DO NOT EXCEED MAXIMUM RECOMMENDED AIR PRESSURE

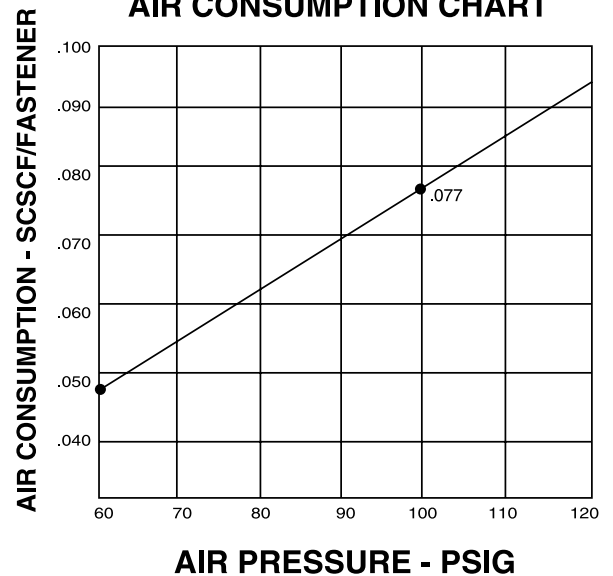


Operate the tool using only the recommended air pressure. Do not exceed the maximum air pressure marked on the tool. Be sure the air pressure gauge is operating properly and check it at least twice a day.



Never use any bottled air or gases such as oxygen to operate the tool since they could cause the tool to explode.

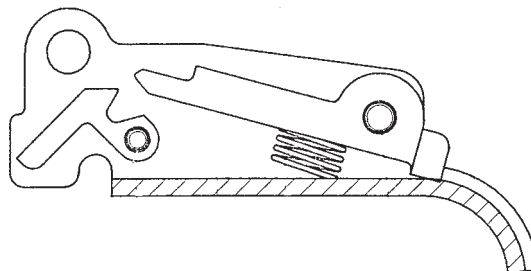
## AIR CONSUMPTION CHART



# ACCESSORIES

## Sequential Operating Kit

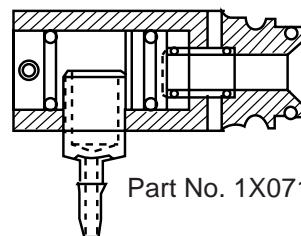
This special attachment is designed for sequential operation (stops "contact" firing). The operator must depress and hold the work contacting element against the work surface before pulling the trigger. This sequence must be repeated each time the tool drives a fastener.



Part No. 406006

## Remote Fire Valve

This valve via a positive air signal allows a machine mounted tool to be operated from an automatic air valve or foot pedal system.



Part No. 1X0713

## Lubricants and Loctite

- Chemplex 710 Lubricant 1 lb.
- Lubricating Oil 16 oz.
- Lubricating Oil 8 oz. with Antifreeze
- Loctite 242 (Blue) 1 oz.

Part No. 403734  
Part No. 403720  
Part No. 219090  
Part No. 093500

## Degreaser Cleaner

Ideal cleaner for all Paslode tools.

Part No. 219086

## Belt Hook

Attaches to cap of tool enabling you to carry tool on belt holder (offered below).

Part No. 219017

## Belt Hook Holder

Attaches to work belt and carries tool using the above belt hook.

Part No. 219028

## Safety Glasses

- Clear
- Tinted



Part No. 402510  
Part No. 402512

## Trigger Valve Repair Kit

This kit repairs all trigger valve air leaks.

Part No. 219224



An Illinois Tool Works Company  
888 Forest Edge Drive  
Vernon Hills, Illinois 60061