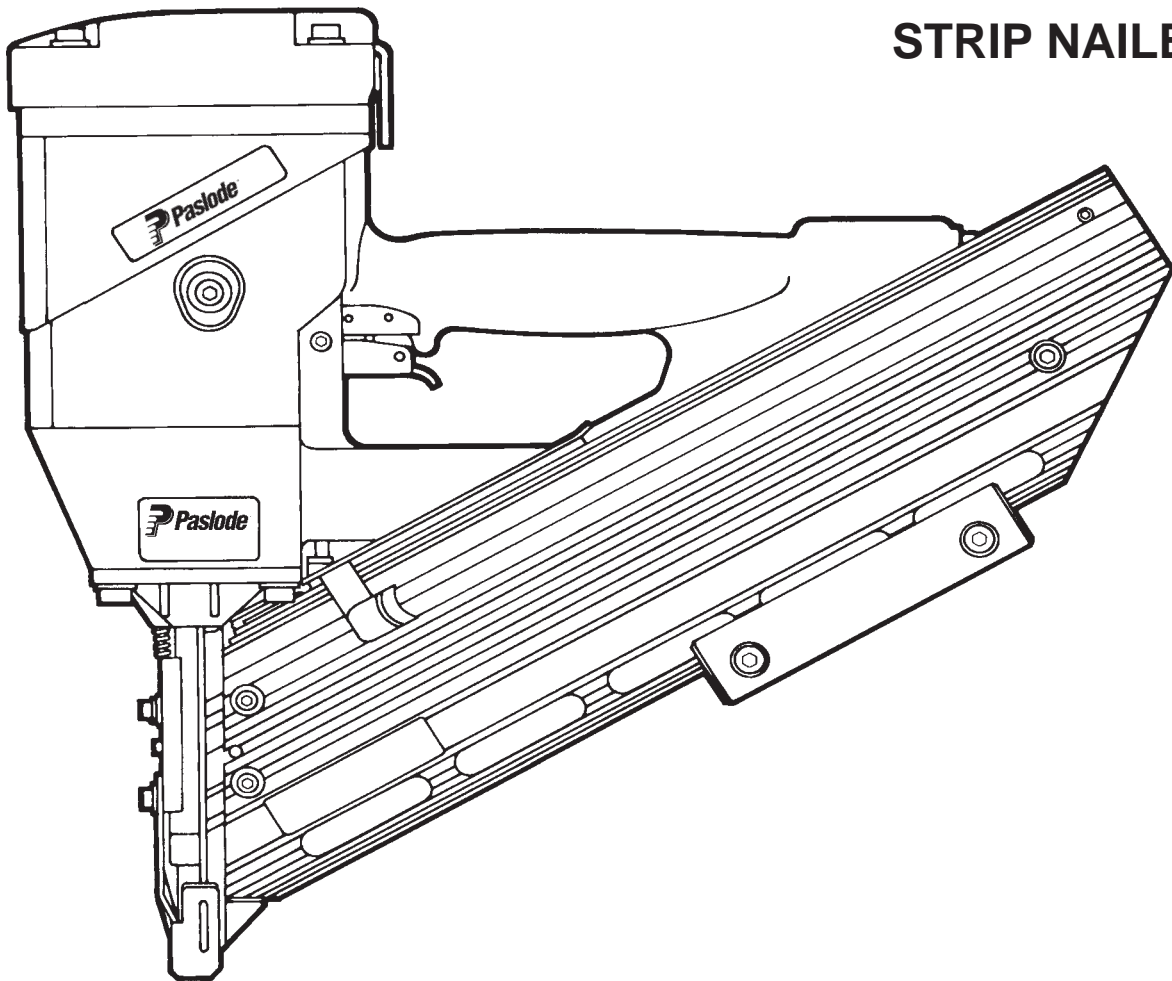




MODEL 6512/130SQ
MODEL 6625/160SQ
STRIP NAILERS



**IMPORTANT!
DO NOT DESTROY**

Always refer to safety and maintenance manuals #403606, #405219 and #405218 for detailed information on these tools. It is the customer's responsibility to have all operators and service personnel read and understand this information.

TOOL SCHEMATIC AND PARTS

MODEL 6512/130SQ, 500430

PARTS LEGEND

MODEL 6625/160SQ, 500440

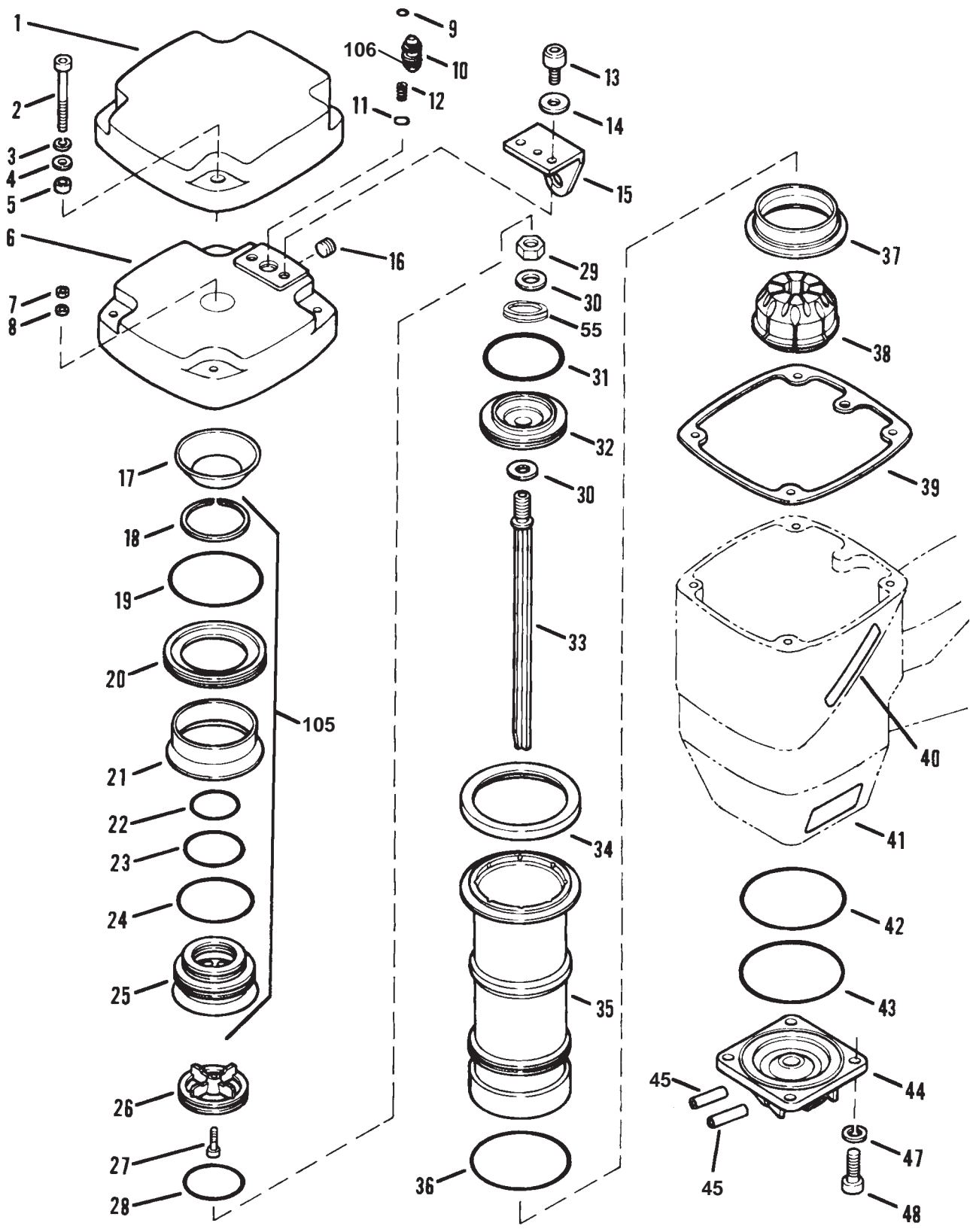
1	500444	1	Silencer Cap	52	500522	1	Reducing Pipe Bushing	
2	404229	4	Socket Head Cap Screw, 1/4-20 x 2-1/4 (6512/130SQ)	53	500432	1	Acorn Nut, 5/16-24	
	404367	4	Socket Head Cap Screw, 1/4-20 x 3-1/4 (6625/160SQ)	54	094742	1	Washer, .312 x.75 x.062	
3	002187	8	Lock Washer, 1/4-20	55	500654	1	Piston Bumper	
4	091447	4	Flat Washer	56	500434	2	Housing Plug, 1/2"	
5	500487	4	Spacer, Silencer Cap	57	097748	1	Spring, Valve Pin	
6	500416	1	Cap, Machined (6512/130SQ)	58	097746	1	Valve Pin	
	500418	1	Cap, Machined (6625/160SQ)	59	092174	1	O-Ring, Valve Body	
7	404325	4	Locknut, 8-32	60	401958	1	Valve Body	
8	401955	3	Washer, 8-32	61	500479	2	Flanged Bearing	
*	9	500485	1	O-Ring (-203)	62	500365	1	Rod, Work Contacting Element Actuation
10	500626	1	Shuttle Valve Assembly	63	500445	1	Spring, Work Contacting Element Rod	
*	11	402031	1	O-Ring (-109)	64	006057	1	Washer, .219 I.D.
12	091339	1	Spring, Shuttle Valve	65	500383	1	Retaining Ring	
13	009016	3	Socket Head Cap Screw, 5/16 x 1	66	500478	1	Side Handle Assembly	
14	095417	2	Lock Washer, 5/16	67	095412	1	Washer, .376 I.D.	
15	500443	1	Hanging Bracket	68	500350	1	Magazine (6512/130SQ)	
16	500387	1	Cap Plug, 1/8 NPT		500351	1	Magazine (6625/160SQ)	
17	500407	1	Main Valve Spring	*	69	500520	2	Wear Strip
18	500371	1	Retaining Ring	70	500633	1	Nail Cover	
*	19	402961	1	O-Ring (-233)	71	404325	1	Lock Nut, 8-32
20	500340	1	Upper Valve Piston	72	500632	1	End Cap, Magazine	
21	500339	1	Seal, Main Valve	73	500384	3	Socket Head Cap Screw, 8-32 x 1.25	
*	22	401951	1	O-Ring (-126)	74	500489	1	Button Head Cap Screw, 5/16-24 x 1.25
*	23	091208	1	O-Ring (-032)	75	500441	2	Grip, Magazine
*	24	500367	1	O-Ring (-035)	76	500435	2	Bushing, Grip
25	500341	1	Lower Valve Piston	**	77	500446	2	Label, Danger
26	500360	1	Post	78	095411	4	Cap Screw, 1/4-20	
▲	27	404232	1	Socket Head Cap Screw, 8-32 x.813	79	500386	4	Bushing, Magazine
*	28	500369	1	O-Ring (-133)	80	500629	1	Follower Assembly
29	091861	1	Lock Nut	81	091825	1	Pin, Negator	
30	092116	2	Washer	82	091826	1	Drum, Negator	
*	31	500480	1	O-Ring (4 x 60 Metric)	83	091840	1	Negator Assembly
32	500337	1	Piston	▲	84	009037	2	Socket Head Cap Screw, 10-32 x 1/2
*	33	500373	1	Driver Blade (6512/130SQ)	85	004238	2	Lock Washer, No. 10
	500374	1	Driver Blade (6625/160SQ)	86	402094	2	Flat Washer, No. 10	
34	500338	1	Sleeve Seal	*	87	500363	1	Lower Work Contacting Element (6512/130SQ)
35	500336	1	Sleeve (6512/130SQ)		500375	1	Lower Work Contacting Element (6625/160SQ)	
	500342	1	Sleeve (6625/160SQ)	88	500362	1	Intermediate Work Contacting Element	
*	36	500366	1	O-Ring (-139)	89	500436	1	Spring, Work Contacting Element
37	500352	1	Bumper Plate	90	402095	1	Nut Bar	
*	38	500376	1	Bumper	91	500349	1	Nosepiece (6512/130SQ)
*	39	500357	1	Gasket, Cap		500344	1	Nosepiece (6625/160SQ)
→	40	404938	2	Label, Upper Housing	92	500358	1	Seal, Nose
41	500786	1	Nameplate, (6512/130SQ)	93	500361	1	Pin, Lockout	
	500787	1	Nameplate, (6625/160SQ)	94	500422	1	Shear Block Assembly (6512/130SQ)	
*	42	500486	1	O-Ring (-234)		500423	1	Shear Block Assembly (6625/160SQ)
*	43	500368	1	O-Ring (-042)	95	403082	2	Washer
44	500343	1	Flange	96	402738	1	Spring, Lockout	
45	500590	1	Roll Pin Assembly	97	500372	1	Retaining Ring	
46	500490	1	Label, Hanger Bracket	98	095417	1	Lock Washer, 5/16	
47	500380	5	Lock Washer, 3/8	99	034976	1	Nut, Flexlock, 5/16	
→	48	092171	5	Socket Head Cap Screw, 3/8 x 1	100	026133	2	Roll Pin, 1/8 x 1
*	49	091623	1	O-Ring (-011)	101	500640	2	SHCS 6-32 x 3/8"
50	500378	1	Housing Assembly	102	091659	2	Flexloc Nut 6-32	
51	405539	1	Label, Nail Size (6512/130SQ)	103	402079	1	Pin, Trigger	
	405540	1	Label, Nail Size (6625/160SQ)	104	406006	1	Sequential Trigger Assembly	
				105	500421	1	Main Valve Assembly	
				106	092048	1	O-Ring	

▲ Apply Loctite (Blue), Part No. 093500

* Denotes Normal Wear Item

** Make sure Danger Label (500446) is properly affixed. Replace if necessary. The labels are available at no charge through the Service Department.

→ Denotes New Change.

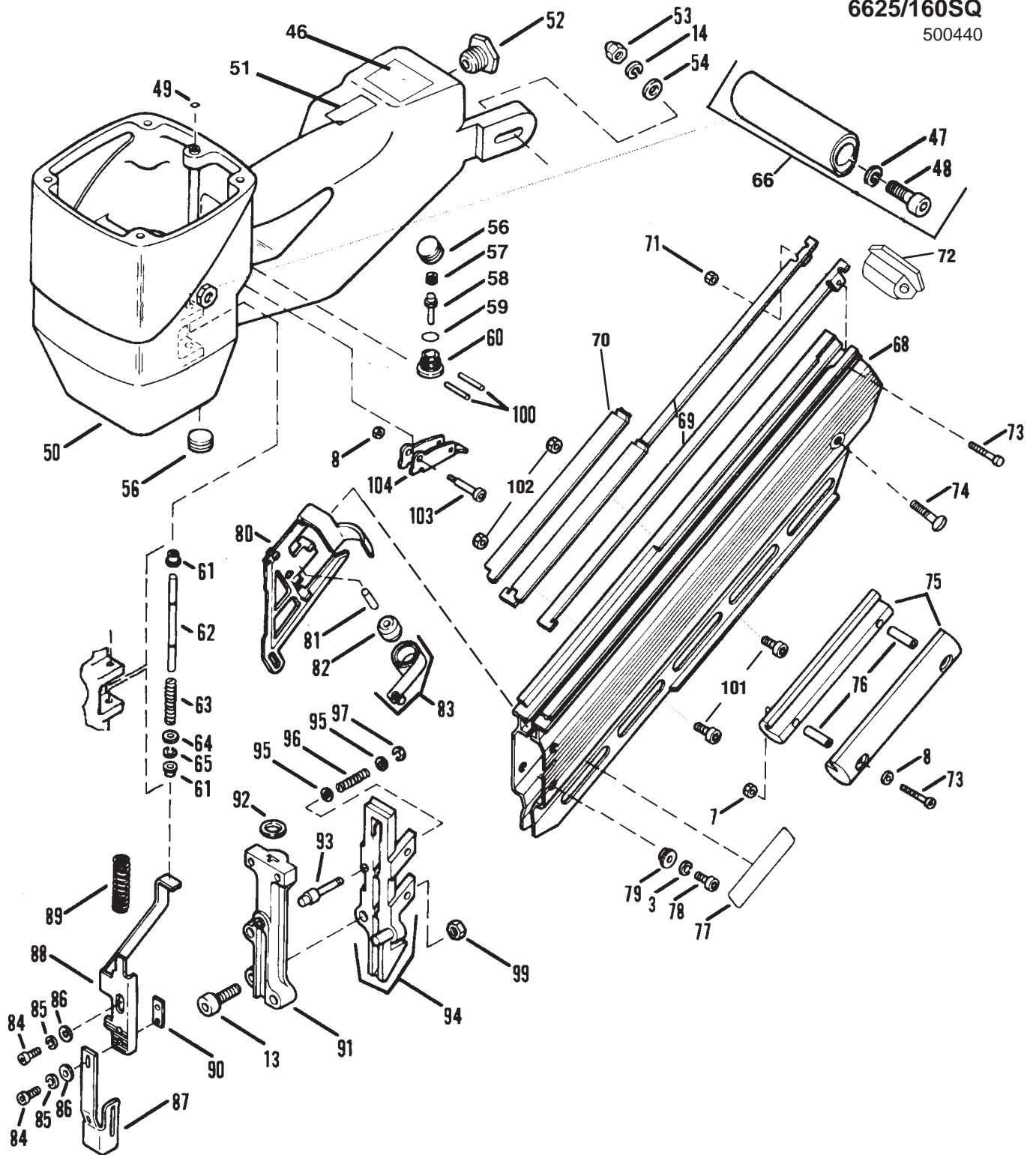


6512/130SQ

500430

6625/160SQ

500440



PARTS OFFERED AS ASSEMBLIES

500427 Cap Assembly (6512/130SQ)

500428 Cap Assembly (6625/160SQ)

Includes

6	500416	1	Cap
	500418	1	Cap
7	404325	1	Lockout Nut, 8-32
8	401955	1	Washer, 8-32
9	500485	1	"O" Ring
10	500626	1	Shuttle Valve Assembly
11	402031	1	"O" Ring
12	091339	1	Spring Shuttle Valve
13	009016	2	Socket Head Cap Screw, 5/16 x 1
14	095417	2	Lock Washer, 5/16
15	500443	1	Hangind Bracket
16	500387	1	Cap Plug, 1/8 NPT
17	500407	1	Main Valve Spring
18	500371	1	Retaining Ring
19	402961	1	"O" Ring
20	500340	1	Upper Valve Piston
21	500339	1	Seal, Main Valve
22	401951	1	"O" Ring, Lower Valve Piston
23	091208	1	"O" Ring, Lower Valve Piston
24	500367	1	"O" Ring, Lower Valve Piston
25	500341	1	Lower Valve Piston
26	500360	1	Post
27	404232	1	Socket Head Capscrew
28	500369	1	O-Ring

500421 Main Valve Assembly

Includes

18	500371	1	Retaining Ring
19	402961	1	"O" Ring Upper Valve Piston
20	500340	1	Upper Valve Piston
21	500339	1	Seal, Main Valve
22	401951	1	"O" Ring, Lower Valve Piston
23	091208	1	"O" Ring, Lower Valve Piston
24	500367	1	"O" Ring, Lower Valve Piston
25	500341	1	Lower Valve Piston

500424 Piston Assembly (6512/130SQ)

500426 Piston Assembly (6625/160SQ)

Includes

29	091861	1	Nut
30	092116	1	Washer
31	500480	1	"O" Ring, Piston
32	500337	1	Piston
33	500373	1	Driver Blade (6512/130)
	500374	1	Driver Blade (6625/160)
55	500654	1	Piston Bumper

SAFETY INSTRUCTIONS

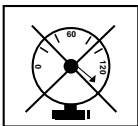
WEAR EYE AND HEARING PROTECTION



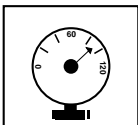
Always wear hearing protection and eye protection devices, including side shields when operating or working in the vicinity of a tool.



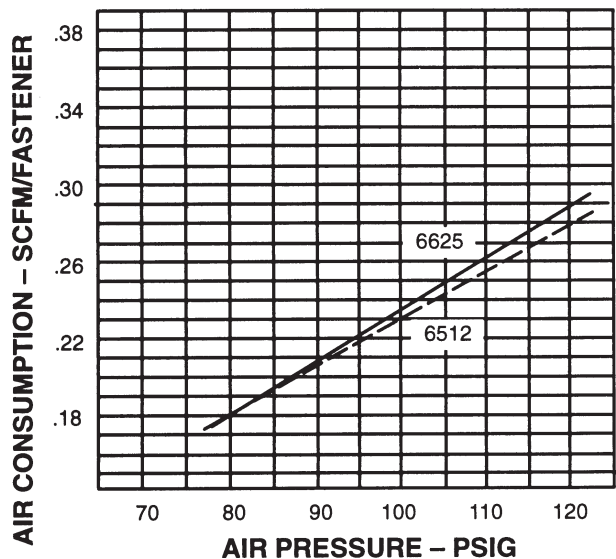
DO NOT EXCEED MAXIMUM RECOMMENDED AIR PRESSURE



Operate the tool using only the recommended air pressure. Do not exceed the maximum air pressure marked on the tool. Be sure the air pressure gauge is operating properly and check it at least twice a day.



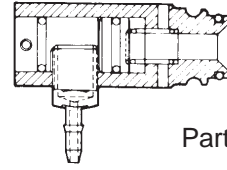
AIR CONSUMPTION CHART



ACCESSORIES

Remote Fire Valve

This valve via a positive air signal allows a machine mounted tool to be operated from an automatic air valve or foot pedal system.



Part No. 1X0713

Lubricants and Loctite

Loctite 242 (blue) 1 oz.

Part No. 093500

→ Lubricating Oil 16 oz.

Part No. 403720

Lubricating Oil with Antifreeze 8 oz.

Part No. 219090

Chemplex 710 Lubricant 1lb.

Part No. 403734

→ Chemplex 710 Lubricant 5 gram tube.

Part No. 219188

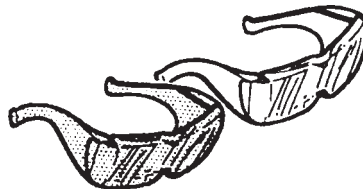
Degreaser Cleaner

Ideal cleaner for all Paslode tools.

Part No. 219086

Safety Glasses

Clear



Part No. 402510

Tinted

Part No. 402512



An Illinois Tool Works Company
888 Forest Edge Drive
Vernon Hills, IL 60061-3105