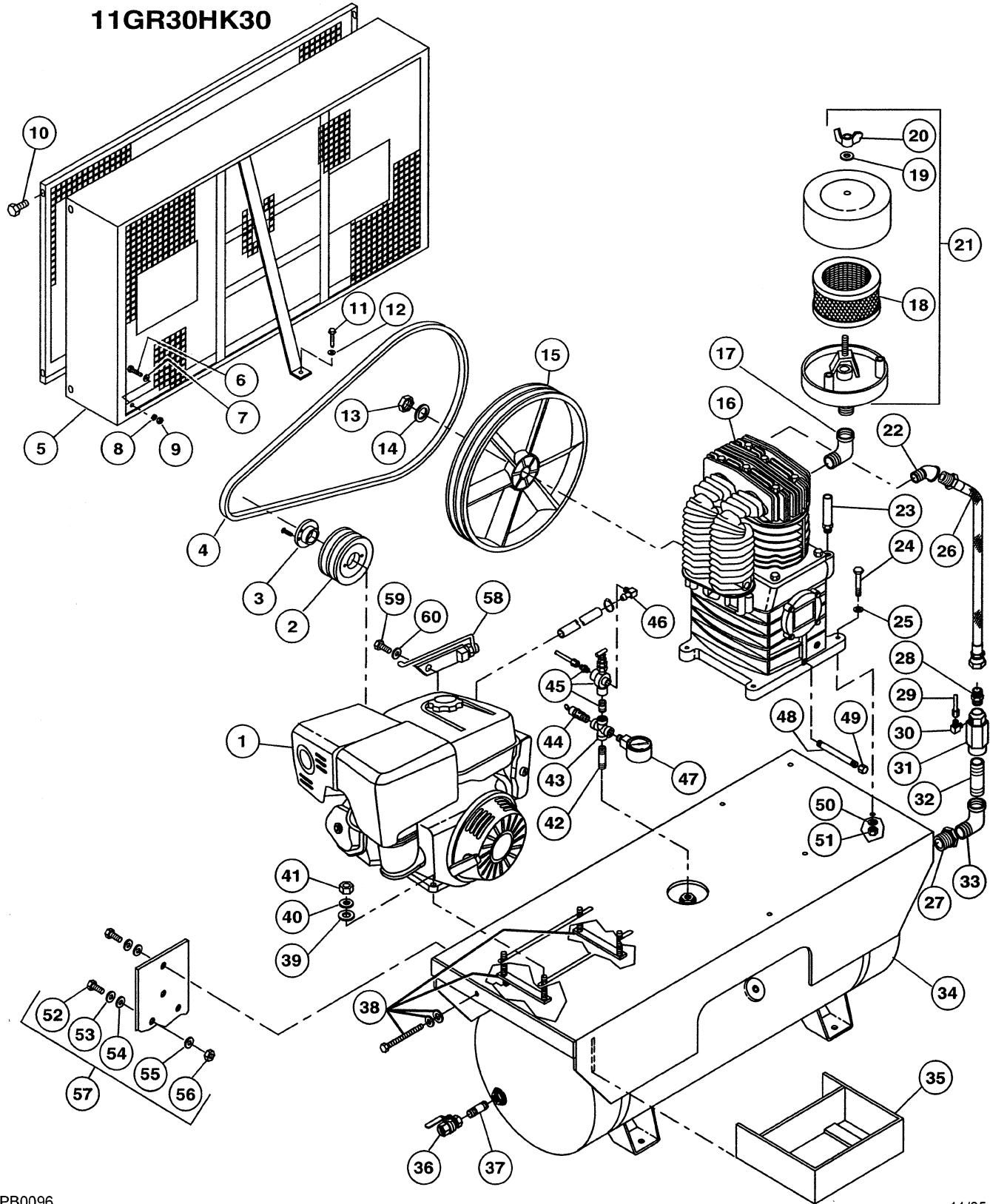


Rol-Air

SCHEMATIC FOR MODEL
11GR30HK30





Associate Engineering Corporation
 606 S. Lake Street, P.O. Box 346
 Hustisford Wisconsin 53034-0346
 Phone: 920-349-3281
 Sales Fax: 920.349.3691 Service Fax: 920.349.8861
www.rolair.net

PARTS LIST FOR 11GR30 SERIES

Schematic #	Description	Part #	Qty.
1	Engine 11 HP Honda GX340 11 HP Kohler CH11S 11 HP Briggs 254427	ENG11HO1 ENG11KOC1 ENG11BR1	1 1 1
2	Pulley	PU2AK64H	1
3	Bushing	HX1000	1
4	Belt	BTA70	2
5	Belt Guard	BG130	1
6	5/16" x 1 1/4" Bolt	MIS10023	2
7	5/16" Flat Washer	MIS10106	2
8	5/16" Lock Washer	MIS10098	2
9	5/16" Nut	MIS10020	2
10	Spinlock Bolt	MIS10094	5
11	5/16" x 1 1/4" Bolt	MIS10023	1
12	5/16" Flat Washer	MIS10106	1
13	Nut, Flywheel	37403780CH	1
14	Washer, Flywheel	37502450CH	1
15	Flywheel	31003040CH	1
16	II-Stage Pump w/Flywheel	PMP22K30CH	1
17	II-Stage Pump less Flywheel 3/4" x 90° Street Elbow	PMP22K30CHLF BLEL0750X90S	1 1
18	Element, Intake	431	1
19	Washer	FSWASHER	1
20	Wingnut	FSNUT	1
21	Intake Filter Assembly	FS14075	1
22	3/4" x 45° Street Elbow	BLEL0750X45S	1
23	3/8" Breather/Oil Fill Plug with "O" Ring	36507050CH	1
24	3/8" x 2" Bolt	MIS10045	4
25	3/8" Flat Washer	MIS10103	4
26	3/4" Braided Discharge Tube	145C	1
27	3/4" x 1/2" Bushing	BLBS0750X0500	1
28	1/2" x 3/4" Brass Straight Flare	BRST0500X0750FL	1
29	3' - 1/4" Nylon Tubing 1/4" Brass Nut 1/4" Brass Ring 1/4" Brass Sleeve	178D BRNT0250 BRRG0250 BRSL0250	3' 2 2 2
30	Brass Elbow	BREL0250X012539	1
31	Check Valve	CV4X4L1	1
32	1/2" x 1 1/2" Nipple	BLNP0500X1500	1
33	1/2" X 90° Street Elbow	BLEL0500X90S	1
34	Tank Assembly	TNK030AH	1
35	Battery Tray	BT5250X8250	1
36	1/2" Shut-Off Valve	SOV0500	1
37	1/2" x 2" Nipple	BLNP0500X2000	1
38	Belt Tightener Kit	SBT11HP-ANGLE	1
39	3/8" Flat Washer	MIS10103	4
40	3/8" Lock Washer	MIS10100	4
41	3/8" Nut	MIS10040	4
42	1/4" X 4" Nipple	BLNP0250X4000	1
43	1/4" Cross	BLCR0250	1
44	Safety Relief Valve	SRV0250A200	1
45	Pilot Unloader Valve	131B	1
46	Brass Elbow	BREL0250X0125H16	1
47	1/4" - 300 PSI Gauge	GA0250300	1
48	1/4" x 5" Nipple	BLNP0250X5000	1
49	1/4" Black Cap	BLCA0250	1
50	3/8" Lock Washer	MIS10100	4
51	3/8" Nut	MIS10040	4
52	5/16" x 7/8" Bolt	MIS10022	4
53	5/16" Lock Washer	MIS10098	4
54	5/16" Flat Washer	MIS10106	4
55	5/16" Lock Washer	MIS10098	4
56	5/16" Nut	MIS10020	4
57	Vibration Dampening Kit	VIBBR11GR	1
58	Idle Control Kit - Honda GX340 Kohler CH11S Briggs 254427	207GX340&390K1QAE 207CH11&CH14S 207BR11HP	1 1 1
59	3/8" x 1" Bolt	MIS10041	1
60	3/8" Lock Washer	MIS10100	1

SCHEMATIC FOR PMP22K30

