

# Product Staging Ahead of Packaging Machinery

# SmartFeeds<sup>J</sup> Shuttleworth<sup>®</sup>

**/ Wrapper Infeeds / Packaging Machinery infeeds / Bindery Equipment Infeeds**

Shuttleworth offers a complete line of wrapper infeeds, wrapper controlled designs for the OEM manufacturer and freestanding units with self contained wiring for field installation on existing machines. Servo-SmartFeed<sup>J</sup> systems for high-speed applications and moderate speed wrapper infeeds improve the performance of most machinery. Indexer, multi-packer or servo SmartFeeds<sup>J</sup> are available for lug or belt fed wrappers. Belt fed wrappers with product spacing devices can take full advantage of the low backpressure Slip-Torque<sup>7</sup> Conveyors.

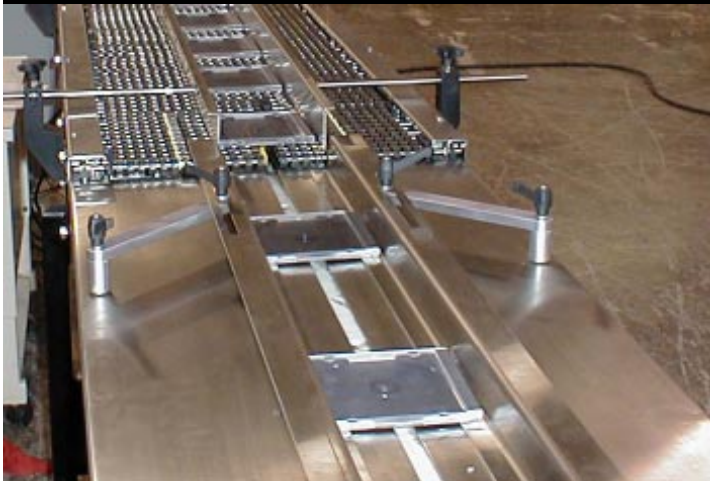
Each system takes advantage of Shuttleworth Slip-Torque<sup>7</sup> technology. When products accumulate, the low backpressure rollers beneath the products stop and product damage is reduced. Other conveyor surfaces continue to move causing product damage and overpowering the accumulation zone. In fact, roller-top chain conveyors start moving when product is stopped.

The Servo SmartFeed<sup>J</sup> with its *adjustable length servo-zone* easily accommodates variable product length, making the system more efficient than those that require several servo drives and additional controls. The Servo-SmartFeed<sup>J</sup> reduces overall system length and offers a simple control package.

Aluminum or Stainless Steel SmartFeeds<sup>J</sup> are belt or chain driven.

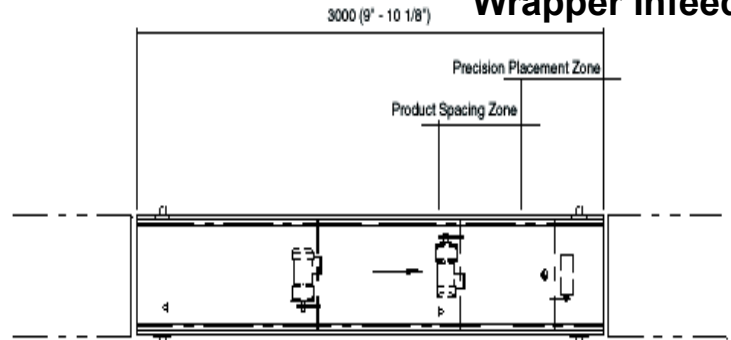


Servo SmartFeed<sup>J</sup>



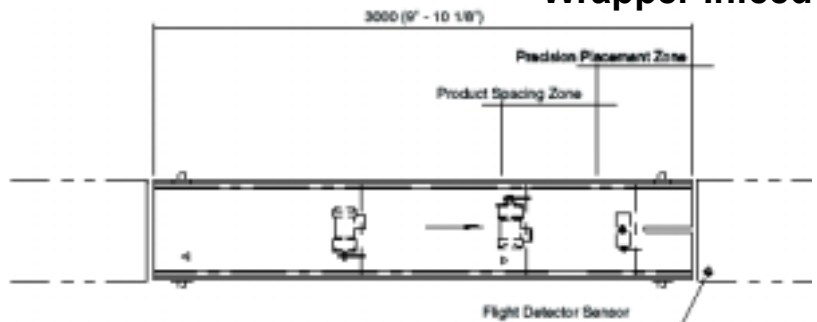
Servo SmartFeed<sup>J</sup> Lug

## Belt Fed Wrapper Infeed

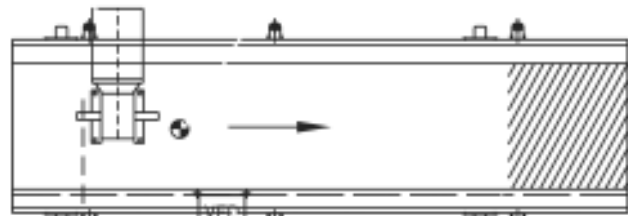


Servo Product Control is offered for lug feed or belt feed wrappers. Both utilize Slip-Torque<sup>7</sup> technology and Servo section(s) for product placement. The key benefits of the Servo-SmartFeeds<sup>™</sup> is the moving product accumulation zone.

## Lug Fed Wrapper Infeed

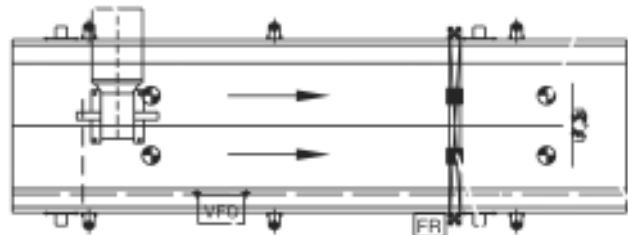


## Belt Fed Wrapper Infeeds



- The base SmartFeed<sup>J</sup> model has:
- adjustable product guides, variable speed controls
  - adjustable product spacing
  - and low back pressure accumulation

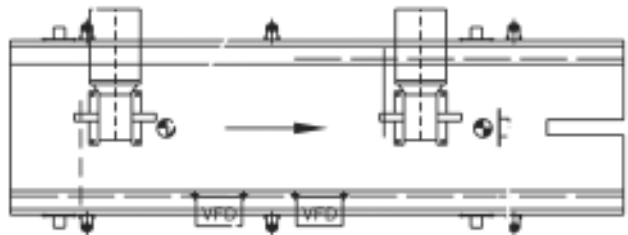
SmartFeed<sup>J</sup>



- The multi-pack belt model has:
- adjustable product guides, variable speed controls
  - an overhead brake for rapid product count changes
  - and is compatible to belt fed wrappers from automatic "L" sealers to form and fill machinery

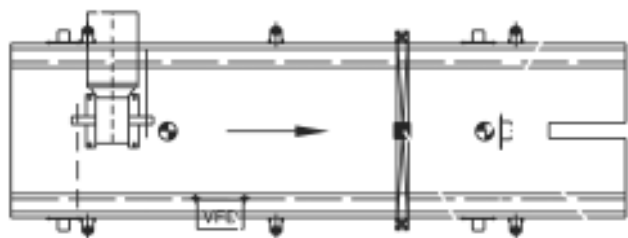
SmartFeed<sup>J</sup> Mutipacker

## Lug Fed Wrapper Infeeds



- The lug indexer infeed has:
- variable speed controls
  - adjustable product guides
  - and provides precise positioning into a lug fed wrapper

SmartFeed<sup>J</sup> Lug Indexer



- variable speed controls
- precise positioning into a lug fed wrapper
- single or multi-count product discharge
- and an adjustable overhead product break

SmartFeed<sup>J</sup> Lug Mutipacker

**Shuttleworth, Inc.**

Huntington, IN USA  
Tel: 260-356-7820

Athy, Ireland  
Tel: +353.507.34144

Gent, Belgium  
Tel: +32.9.221 13 14

Petaling Jaya, Malaysia  
Tel: 603-79576718

[www.shuttleworth.com](http://www.shuttleworth.com)  
inc@shuttleworth.com