

### description

The Matrix L-66 and L-66S are semi-automatic turntable style wrapping machines designed for economical and efficient unitization of pallet loads with stretch film which has been pre-stretched. This machine can dramatically increase throughput rates and lower cost per load compared to manual (hand) stretch wrapping operations

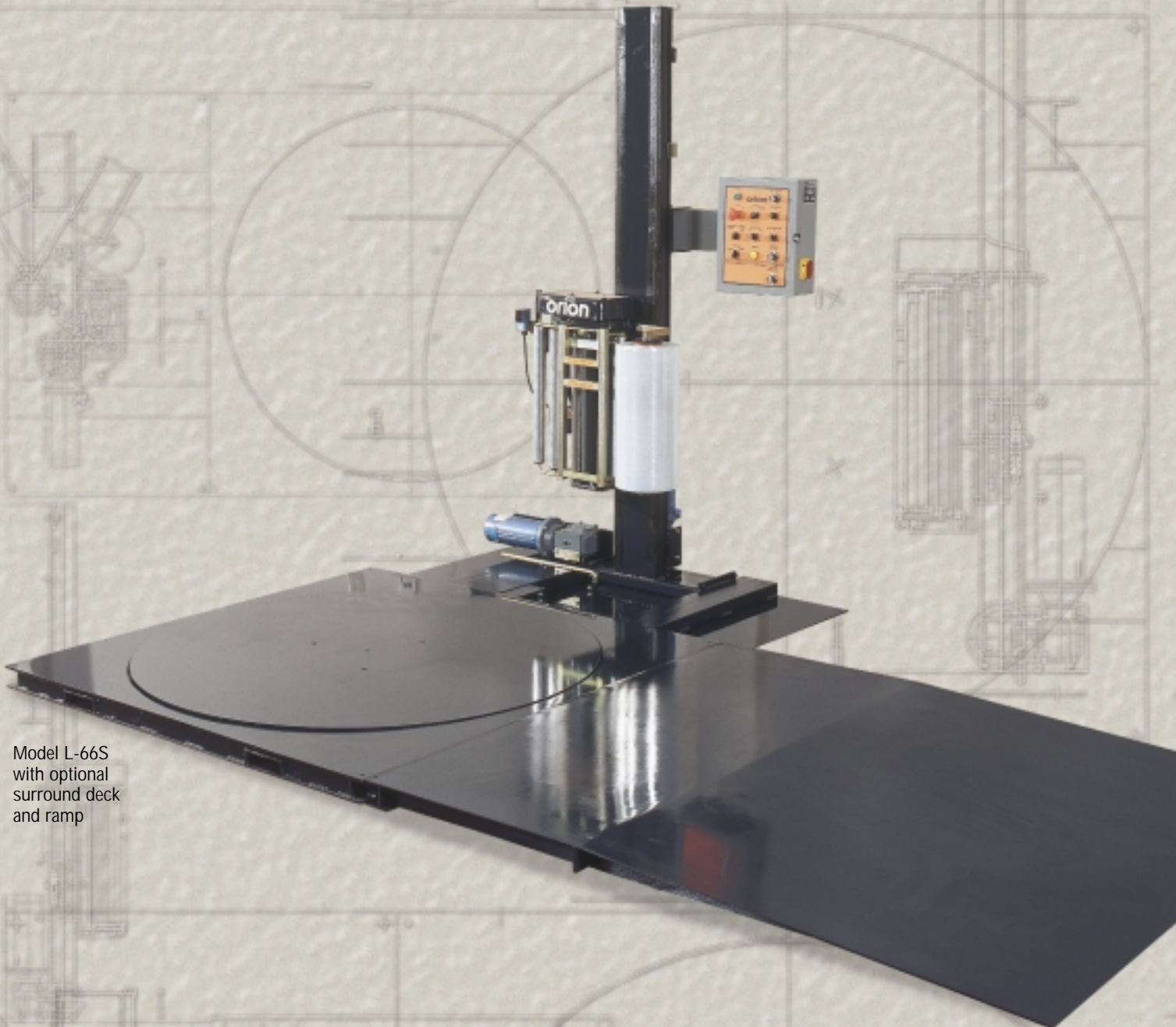
### operation

- 1) Place load on turntable with forklift or pallet jack
- 2) Attach film to bottom of load, press start button
- 3) Load is wrapped according to set parameters
- 4) After cycle, cut film and secure tail to load
- 5) Remove wrapped pallet load

### L-66 & L-66S features

- Powered prestretch film carriage elongates film 245% (standard)
- Wraps pallet loads (55" x 55" max.) weighing up to 4,000 pounds
- Automatically adjusts for various load heights (up to 84" maximum)
- Variable turntable rotation speed with a maximum of 14 RPM
- Forklift portable base design for easy machine transport
- All structural steel construction for years of dependable service
- 11-caster DuraGlide™ turntable support system is quiet and maintenance-free
- Non-proprietary replacement parts can be purchased locally or from dealer
- Self-threading Insta-Thread™ carriage makes loading film fast, safe and easy
- Revo-Logic™ technology assures precise number of top/bottom wraps
- Adjustable film roping bar for strong interlocking of load to pallet
- Full steel surrounding base frame (L-66S only)

Model L-66S  
with optional  
surround deck  
and ramp



## specifications

### Machine Performance

Rotation speed Variable to 14 RPM

### Film Delivery System

Prestretch ratio 245% (standard)

Threading method Insta-Thread

Corner compensation Electronic

### Load Specifications

Maximum load weight 4,000 pounds

Maximum load size 20,000 pounds static

Maximum load height 55"W x 55"L

Maximum load height 84"

### Power Requirements

115 / 1 / 60 15 amp

### Structural Design

100% Structural steel used throughout

Portable after initial installation

Structural steel tube mast

### Warranty

3/5 Year limited

### Estimated Shipping Weight

L-66: 1,650 pounds

L66S: 1,800 pounds

## Insta-Thread™ Film Delivery System: Fast, Easy, Consistent

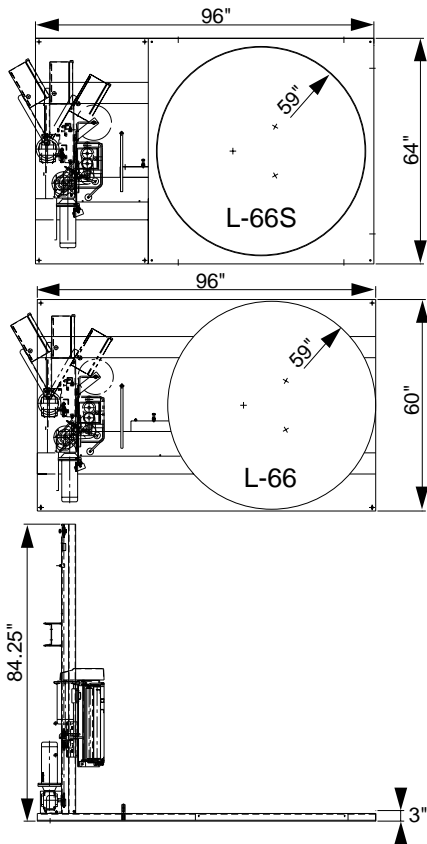


*Threading the Insta-Thread film carriage is fast and easy: simply open the hinged roller frame, pull the film across, then close and latch the frame. It's fast, safe and easy.*

The L-66 and L-66S use the Insta-Thread™ film delivery system, an extremely reliable film carriage engineered to accurately pre-stretch film at a fixed rate of 245% and deliver it to the load at a constant tension level. Higher or lower rates are available optionally.

- Uses standard 20" stretch film rolls
- Precision ground, polyurethane pre-stretch rollers for consistent, maximum film yield
- 245% standard pre-stretch ratio for best economy
- Carriage lifted by heavy-duty ANSI industrial chain
- Electronic film tension control on control panel
- Variable speed film output for even tension on corners
- Heavy-duty ANSI chain & sprocket ratio control
- Multi-point UHMW precision carriage guidance system
- Revo-Logic™ exact wrap count technology eliminates film waste by applying top & bottom wraps precisely

## dimensions



## Controller: Non-proprietary, Easy to Use, UL, NEMA-12



- CSA Approved, UL listed, NEMA 12 controller
- Non-proprietary pushbuttons and switches
- Large mushroom-style Emergency E-Stop button
- Electronic film tension control on keypad
- State-of-the-art Allen Bradley MicroLogix PLC
- Separate settings for top wraps & bottom wraps
- Separate speed settings for carriage up & down
- Raise & lower carriage manually with Carriage Jog
- Pause wrap cycle without resetting with Cycle Pause
- Rotate turntable manually with Turntable Jog
- Wrap Up Only key for uni-directional wrap mode

## Turntable Drive & Support: Quiet, Easy to Maintain



- Heavy-duty chain drive with tensioner
- Quiet & durable Dura-Glide™ turntable support
- Variable speed drive motor: 0-14 RPM
- Positive home position alignment puts turntable in same position after each wrap cycle
- Non-proprietary replacement parts
- All components easily accessible
- Electronically adjustable soft start (gradual turntable acceleration)

## distributed by:

**ORION** Orion Packaging Systems, Inc.  
 A Pro Mach Operating Partner  
 USA Corporate Headquarters  
 100 Crescent Drive  
 Collierville, TN 38017  
 Toll Free (800) 333-6556  
 Telephone (901) 888-4170  
 Fax (901) 365-1071  
 CANADA Manufacturing  
 2270 Industrial Blvd  
 Laval, Montreal, H7S 1P9  
 Telephone (450) 667-9769  
 Fax (450) 667-6320  
 Email: sales@orionpackaging.com  
 Web: www.orionpackaging.com  
 Bulletin #L66.03/01.JKG

Model L-66 with optional ramp

