

**For uncompromising quality and packaging effectiveness**

Consistent high quality makes Signode steel strapping the first choice among packaging professionals worldwide.

Purchasing professionals also prefer Signode strapping because it is made to the most exacting tolerances, so it goes further and stretches their strapping dollars.

**Types, sizes and finishes for all demanding applications**

Signode offers two basic types of steel strapping: Apex Plus™ and Magnus®. Each is specially formulated to meet the demands of a particular range of applications. And for each strapping type, there is a selection of sizes and finishes which matches the specific requirements of those applications.

**Apex Plus™ strapping**

A cold-rolled, medium carbon steel strapping. Manufactured with superior edge conditioning and coating.

**Magnus® strapping**

A cold-rolled, medium carbon steel strapping. Heat-treated with a Signode process that combines fine surface and controlled physical properties with high strength and excellent shock resistance.

**Standard strap finishes**

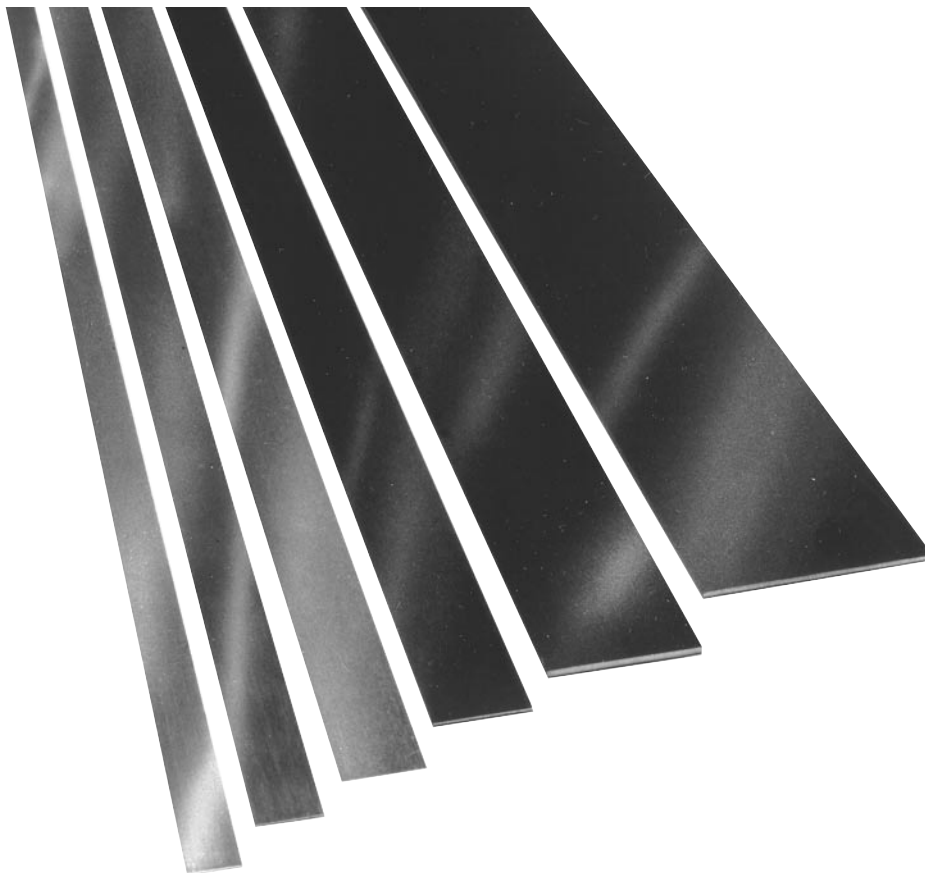
Signode produces three different steel strapping finishes. Each is tailored to the requirements of particular tensioning methods, sealing devices, and packaging applications.

**Painted**

Painted strapping is coated to offer corrosion resistance. Available in wide Magnus strapping sizes, it is used in crimp-type seal systems to produce high joint strength.

**Painted and waxed**

Painted and waxed strapping also provides corrosion resistance. Available in all Apex Plus and



Sizes from 3/8" x 0.017" to 2" x 0.044" (9.5 x 0.43 mm to 50.8 x 1.12 mm)

Magnus strap sizes, it can be used in notch or crimp-type seal systems. Its primary advantage is improved tension transmission around load corners.

Waxed strapping is required for feedwheel-type tensioners.

**Zinc painted and waxed**

Zinc finish strapping is waxed and has a zinc enriched coating to provide outstanding resistance to rust. Available in a variety of Apex Plus and Magnus sizes, it has the same improved tension transmission characteristics as the painted and waxed strapping. Zinc finish protects where it is needed most—at points of surface damage and scratches.



*Signode steel strapping and plywood can be combined to fabricate 300 gal. (1140 l) storage containers used to store and ship a myriad of industrial products.*

Note: Signode steel strapping plants are ISO-9000 certified.

# Strapping

## Apex Plus™ strapping

Strap Size				Part Number	Average Strength		Yield		Coil Winding	Coil Weight lbs	Strap Finish
Width		Thickness			lbs	N	ft/lb	M/kg			
inch	mm	inch	mm								
3/8	9.5	.017*	0.43	2X1502	975	4 340	46.1	31.0	Mill	105	Painted & Waxed
1/2	12.7	.017*	0.43	2X1504	1,275	5 670	34.6	23.3	Mill	105	Painted & Waxed
		.020*	0.51	2X1270	1,475	6 560	29.4	19.8	Mill	105	Painted & Waxed
		.020*	0.51	2X1174	1,475	6 560	29.4	19.8	Mill	105	Zinc
5/8	15.9	.017*	0.43	2X1505	1,625	7 230	27.7	18.6	Mill	105	Painted & Waxed
		.020*	0.51	2X1253	1,825	8 120	23.6	15.9	Mill	105	Painted & Waxed
3/4	19.0	.017*	0.43	2X1506	1,900	8 450	23.1	15.5	Mill	105	Painted & Waxed
		.020*	0.51	2X1509	2,150	9 560	19.6	13.2	Mill	105	Painted & Waxed

## Magnus® strapping

1/2	12.7	.020	0.51	085604	1,525	6 780	29.4	19.8	Mill	105	Painted & Waxed
		.020	0.51	075955	1,525	6 780	29.4	19.8	Mill	105	Zinc
		.023	0.58	085620	1,750	7 780	25.6	17.2	Mill	105	Painted & Waxed
5/8	15.9	.020*	0.51	085644	1,900	8 450	23.6	15.9	Mill	105	Painted & Waxed
		.020*	0.51	076061	1,900	8 450	23.6	15.9	Mill	105	Zinc
		.023	0.58	088432	2,175	9 670	20.5	13.8	Mill	105	Painted & Waxed
3/4	19.0	.023	0.58	076178	2,175	9 670	20.5	13.8	Mill	105	Zinc
		.020	0.51	089397	2,250	10 010	19.6	13.2	Mill	105	Painted & Waxed
		.023	0.58	089370	2,600	11 560	17.1	11.5	Mill	105	Painted & Waxed
		.025*	0.64	085684	2,800	12 450	15.7	10.5	Mill	105	Painted & Waxed
		.025*	0.64	085680	2,800	12 450	15.7	10.5	Ribbon	75	Painted & Waxed
		.025*	0.64	076310	2,800	12 450	15.7	10.5	Mill	105	Zinc
		.031	0.79	085704	3,450	15 350	12.7	8.5	Mill	105	Painted & Waxed
		.031	0.79	085700	3,450	15 350	12.7	8.5	Ribbon	75	Painted & Waxed
		.031	0.79	076472	3,450	15 350	12.7	8.5	Mill	105	Zinc
1-1/4	31.8	.025	0.64	089367	4,650	20 680	9.4	6.3	Ribbon	110	Painted & Waxed
		.029	0.74	2X1268	5,400	24 020	8.1	5.4	Ribbon	110	Painted & Waxed
		.029	0.74	2X1296	5,400	24 020	8.1	5.4	Ribbon	110	Zinc
		.044	1.12	2X1438	7,900	35 140	5.3	3.6	Ribbon	110	Painted & Waxed
2	50.8	.044	1.12	2X1283	12,500	55 600	3.3	2.2	Ribbon	120	Painted
2	50.8	.044	1.12	2X1439	12,500	55 600	3.3	2.2	Ribbon	120	Painted & Waxed

\*300 ft. demonstration coils are available for these sizes.

**Steel strap packaging**

**Coil winding**

Signode strapping is produced in two basic coil windings:

**Mill wound**

The strapping is oscillated uniformly and tightly across the 2-1/2" (63.5 mm) width of the coil.

**Ribbon wound**

Each layer is wound directly over the one below it so that the width of the strapping is the width of the coil.



Mill wound

Ribbon wound

**Coil sizes**

**Inside diameter:** 16" (406.4 mm)

**Outside diameter:** Mill wound coils measure 23" (584.2 mm). Ribbon wound coils vary from 23-1/2" to 27" (596.9 mm to 685.8 mm) depending on strap size.

**Coil weight**

Weights listed below are for one coil of strapping

3/8"-3/4" (9.5-19.0 mm) Mill wound 105 lbs (47.3 kg)

3/8" (9.5 mm) Curved edge 100 lbs (45 kg)

3/4" (19.0) Ribbon wound 75 lbs (33.8 kg)

1-1/4" (31.8 mm) Ribbon wound 120 lbs (54 kg)

2" (50.8 mm) Ribbon wound 120 lbs (54 kg)



Ribbon wound skid



Mill wound skid

**Standard multi-coil skids**

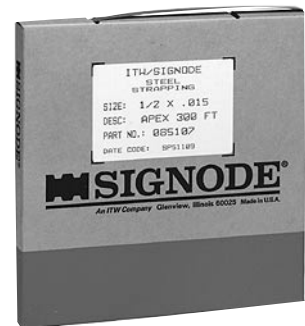
Twelve mill wound coils make up a standard skid. The number of ribbon wound coils will vary depending on the width of the strapping.

**Large coils**

1-1/4" x 0.031" (31.8 x 0.79 mm) painted and waxed Magnus is available in a 480 pound coil. Other Apex Plus or Magnus sizes can be produced in 450 pound or larger coils on a special manufacture basis. Contact your Signode sales representative for details.

**Special, single coil packages**

A number of strap sizes are available in 300 ft. (91.4 m) lengths. For flexibility and portability, the container itself serves as the dispenser. See chart below for available sizes.



**300 Ft. portable coils**

Strap Type	Strap Size		Part Number	Approximate Weight/Coil	
	inch	mm		lbs	kg
Apex Plus	1/2 x 0.017	12.7 x 0.43	2X1514	9	4.0
Apex Plus	5/8 x 0.017	15.9 x 0.43	2X1515	11	5.0
Apex Plus	3/4 x 0.017	19.0 x 0.43	2X1516	13	5.9
Apex Plus Anchor		19.0 x 0.43	2X1519	13	5.9
Magnus	1/2 x 0.020	12.7 x 0.51	039047	10.2	4.6
Magnus	5/8 x 0.020	15.9 x 0.51	085650	13.6	6.2
Magnus	3/4 x 0.025	19.0 x 0.64	085690	20.1	9.1
Magnus	3/4 x 0.031	19.0 x 0.79	085710	24.7	11.2

## Steel/Strap options

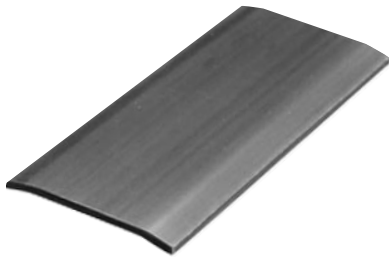
3610 W. Lake Ave. • Glenview IL 60025  
1-800-323-2464

### Punched strapping

Many Apex Plus and Magnus sizes may be ordered pre-punched. Punched holes can be ordered in several sizes with a choice of hole centers. Punched Apex Plus strapping has in-line holes only. Magnus may be either in-line or staggered. Punched strapping is used in a variety of applications, including repairing pallets and cross-bracing mobile homes.

### Curved edge strapping

Slightly curved, Apex Plus strap edges “smooth” themselves into the package, thus avoiding any likelihood of snagging. Curved edge strapping is commonly used to bind the ends of large paper rolls. Standard Apex Plus strap sizes include 3/8" x 0.017" and 3/8" x 0.020" (9.5mm x 0.43mm and 9.5mm x 0.51mm).



### Anchor strapping

The standard or stocked version of punched strapping comes in two sizes:

3/4" x 0.017" (19.0 x 0.43mm)  
Apex Plus with in-line 0.140" (3.5mm) holes on 3/4" (19.0mm) centers and a strap strength of 1310 lbs. (5 827 N).

1-1/4" x 0.029" (31.8 x 0.74mm)  
Magnus with staggered 0.250" (6.4mm) holes on 1-1/2" (38.1mm) centers and a strap strength of 4020 lbs. (17 881 N).

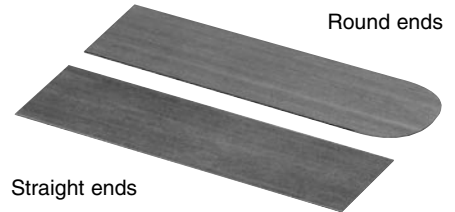
3/4" (19.0mm)  
Apex Plus  
strapping



1-1/4" (31.8 mm)  
Magnus strapping

### Cut-to-length strapping

All sizes of Signode strapping are available in pre-cut lengths—from 12" through 180" (305-4572mm). All sizes 3/4" x .025" (19.0mm x 0.64mm) and above have straight cut ends. All other sizes have rounded ends. Length tolerance is  $\pm 1/2$ " (12.7mm).



Straight ends

### Stainless steel strapping

Stainless steel strapping with a special rustproof alloy is available for applications where strapping is exposed to the elements. The standard size is 5/8" x 0.020" (15.9 x 0.51mm). Other sizes are available by special request.